


Anti-CaMKII (phospho T286) antibody ab32678

★★★★★ [28 Abreviews](#) [76 References](#) [画像数 1](#)

製品の概要

製品名	Anti-CaMKII (phospho T286) antibody
製品の詳細	Rabbit polyclonal to CaMKII (phospho T286)
由来種	Rabbit
特異性	This antibody is specific for the ~50 kDa alpha CaM Kinase II subunit and the ~60 kDa beta CaM Kinase II subunit phosphorylated at Thr286 in Western blots. Immunolabeling is blocked by the phosphopeptide used as the antigen but not by the corresponding dephosphopeptide.
アプリケーション	適用あり: WB
種交差性	交差種: Rat 交差が予測される動物種: Chicken, Cow 
免疫原	Synthetic peptide corresponding to Rat CaMKII (phospho T286).
ポジティブ・コントロール	WB: Rat cortex lysate
特記事項	<p>The Life Science industry has been in the grips of a reproducibility crisis for a number of years. Abcam is leading the way in addressing this with our range of recombinant monoclonal antibodies and knockout edited cell lines for gold-standard validation. Please check that this product meets your needs before purchasing.</p> <p>If you have any questions, special requirements or concerns, please send us an inquiry and/or contact our Support team ahead of purchase. Recommended alternatives for this product can be found below, along with publications, customer reviews and Q&As</p>

製品の特性

製品の状態	Liquid
保存方法	Shipped at 4°C. Upon delivery aliquot and store at -20°C. Avoid freeze / thaw cycles.
バッファー	pH: 7.50 Constituents: 0.238% HEPES, 50% Glycerol, 0.87% Sodium chloride, 0.01% BSA
精製度	Immunogen affinity purified
ポリ/モノ	ポリクローナル
アイソタイプ	IgG

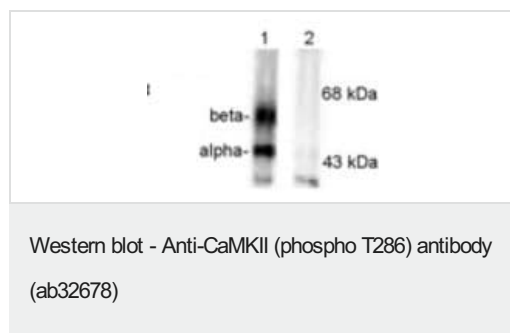
The Abpromise guarantee **Abpromise保証は、** 次のテスト済みアプリケーションにおけるab32678の使用に適用されます
アプリケーションノートには、推奨の開始希釈率がありますが、適切な希釈率につきましてはご確認ください。

アプリケーション	Abreviews	特記事項
WB	★★★★★ (18)	1/1000. Predicted molecular weight: 50 kDa. Predicted molecular weight: ~50 kDa for the alpha subunit and ~60 kDa for the beta subunit of CaMKII.

ターゲット情報

機能	CaM-kinase II (CAMK2) is a prominent kinase in the central nervous system that may function in long-term potentiation and neurotransmitter release. Member of the NMDAR signaling complex in excitatory synapses it may regulate NMDAR-dependent potentiation of the AMPAR and synaptic plasticity.
配列類似性	Belongs to the protein kinase superfamily. CAMK Ser/Thr protein kinase family. CaMK subfamily. Contains 1 protein kinase domain.
細胞内局在	Cell junction > synapse > presynaptic cell membrane. Cell junction > synapse. Postsynaptic lipid rafts.

画像



All lanes : Anti-CaMKII (phospho T286) antibody (ab32678) at 1/1000 dilution

Lane 1 : Rat brain cortex lysate.

Lane 2 : Rat brain cortex lysate preincubated with lambda-phosphatase.

Lysates/proteins at 50 µg per lane.

Predicted band size: 50 kDa

Observed band size: 50,60 kDa

Predicted molecular weight: ~50 kDa for the alpha subunit and ~60 kDa for the beta subunit of CaMKII.

These images show the phosphospecificity of this antibody.

Please note: All products are "FOR RESEARCH USE ONLY. NOT FOR USE IN DIAGNOSTIC PROCEDURES"

Our Abpromise to you: Quality guaranteed and expert technical support

- Replacement or refund for products not performing as stated on the datasheet
- Valid for 12 months from date of delivery
- Response to your inquiry within 24 hours

- We provide support in Chinese, English, French, German, Japanese and Spanish
- Extensive multi-media technical resources to help you
- We investigate all quality concerns to ensure our products perform to the highest standards

If the product does not perform as described on this datasheet, we will offer a refund or replacement. For full details of the Abpromise, please visit <https://www.abcam.co.jp/abpromise> or contact our technical team.

Terms and conditions

- Guarantee only valid for products bought direct from Abcam or one of our authorized distributors