



Anti-CaMKII (phospho T286) antibody [22B1] ab171095

★★★★★ [2 Abreviews](#) [24 References](#) [画像数 5](#)

製品の概要

製品名	Anti-CaMKII (phospho T286) antibody [22B1]
製品の詳細	Mouse monoclonal [22B1] to CaMKII (phospho T286)
由来種	Mouse
特異性	ab171095 detects the phosphorylated alpha subunit CaMKII only. It does not detect the non-phosphorylated alpha subunit CaMKII or the ~60 kDa beta subunit in either phosphorylation state.
アプリケーション	適用あり: WB, ICC/IF
種交差性	交差種: Mouse, Rat, Human
免疫原	Synthetic peptide corresponding to Rat CaMKII aa 281-294 (phospho T286). Sequence: HRQETVDCLKKFN
	Database link: P11275
	 Run BLAST with  Run BLAST with
ポジティブ・コントロール	Neuro-2a, C6, HeLa or U251 cells, Rat brain lysate.
特記事項	<p>The Life Science industry has been in the grips of a reproducibility crisis for a number of years. Abcam is leading the way in addressing this with our range of recombinant monoclonal antibodies and knockout edited cell lines for gold-standard validation. Please check that this product meets your needs before purchasing.</p> <p>If you have any questions, special requirements or concerns, please send us an inquiry and/or contact our Support team ahead of purchase. Recommended alternatives for this product can be found below, along with publications, customer reviews and Q&As</p>

製品の特性

製品の状態	Liquid
保存方法	Shipped at 4°C. Store at +4°C short term (1-2 weeks). Upon delivery aliquot. Store at -20°C long term. Avoid freeze / thaw cycle.
バッファー	Preservative: 0.05% Sodium azide Constituent: 99% PBS
精製度	Protein G purified
ポリ/モノ	モノクローナル

クローン名 22B1
アイソタイプ IgG1

アプリケーション

The Abpromise guarantee Abpromise保証は、次のテスト済みアプリケーションにおけるab171095の使用に適用されます
アプリケーションノートには、推奨の開始希釈率がありますが、適切な希釈率につきましてはご確認ください。

アプリケーション	Abreviews	特記事項
WB	★★★★★ (1)	1/2000. Predicted molecular weight: 54 kDa.
ICC/IF		1/100.

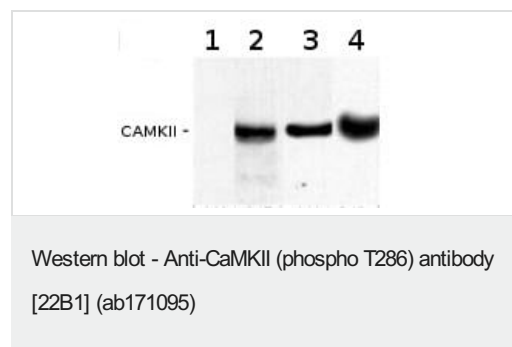
ターゲット情報

機能 CaM-kinase II (CAMK2) is a prominent kinase in the central nervous system that may function in long-term potentiation and neurotransmitter release. Member of the NMDAR signaling complex in excitatory synapses it may regulate NMDAR-dependent potentiation of the AMPAR and synaptic plasticity.

配列類似性 Belongs to the protein kinase superfamily. CAMK Ser/Thr protein kinase family. CaMK subfamily. Contains 1 protein kinase domain.

細胞内局在 Cell junction > synapse > presynaptic cell membrane. Cell junction > synapse. Postsynaptic lipid rafts.

画像



Lanes 1-2 : Anti-CaMKII (phospho T286) antibody [22B1] (ab171095) at 1/2000 dilution

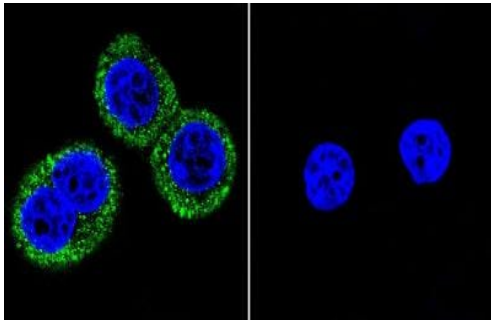
Lanes 3-4 : A non phosphorylated CaMKII antibody at 1/2000 dilution

Lane 1 : Unphosphorylated rat brain homogenate

Lanes 2 & 4 : Phosphorylated Rat brain homogenate

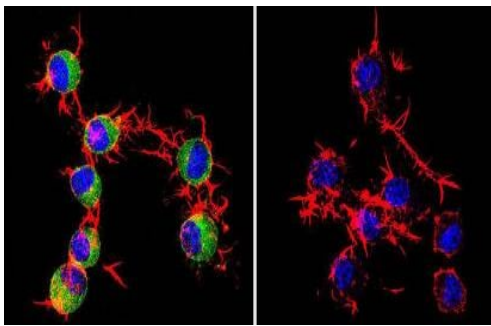
Lane 3 : Unphosphorylated Rat brain homogenate

Predicted band size: 54 kDa



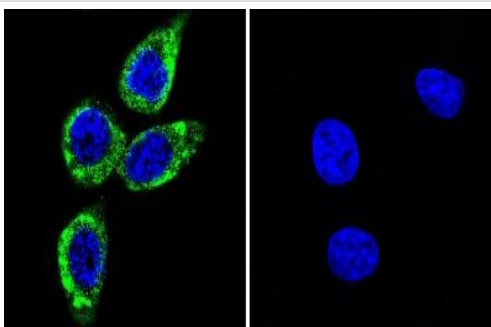
Immunofluorescence analysis of U251 (human) cells labeling phosphorylated CaMKII (green) with ab171095 at a 1/100 dilution. Nuclei are stained (blue).

Immunocytochemistry/ Immunofluorescence - Anti-CaMKII (phospho T286) antibody [22B1] (ab171095)



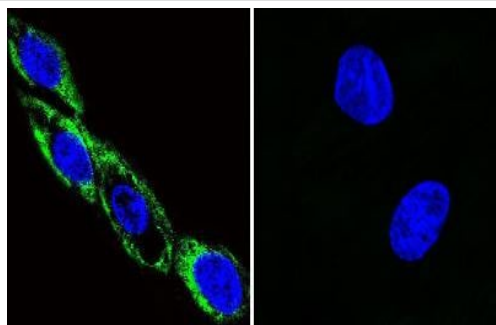
Immunofluorescence analysis of Neuro-2 (mouse) cells (left image) or cells stimulated with Lambda-phosphatase (right image) labeling phosphorylated CaMKII (green) with ab171095 at a 1/50 dilution. F-actin (red) and nuclei (blue).

Immunocytochemistry/ Immunofluorescence - Anti-CaMKII (phospho T286) antibody [22B1] (ab171095)



Immunofluorescence analysis of HeLa cells labeling phosphorylated CaMKII (green) with ab171095 at a 1/50 dilution. Nuclei are stained (blue).

Immunocytochemistry/ Immunofluorescence - Anti-CaMKII (phospho T286) antibody [22B1] (ab171095)



Immunofluorescence analysis of C6 cells labeling phosphorylated CaMKII (green) with ab171095 at a 1/100 dilution. Nuclei are stained (blue).

Immunocytochemistry/ Immunofluorescence - Anti-CaMKII (phospho T286) antibody [22B1] (ab171095)

Please note: All products are "FOR RESEARCH USE ONLY. NOT FOR USE IN DIAGNOSTIC PROCEDURES"

Our Abpromise to you: Quality guaranteed and expert technical support

- Replacement or refund for products not performing as stated on the datasheet
- Valid for 12 months from date of delivery
- Response to your inquiry within 24 hours
- We provide support in Chinese, English, French, German, Japanese and Spanish
- Extensive multi-media technical resources to help you
- We investigate all quality concerns to ensure our products perform to the highest standards

If the product does not perform as described on this datasheet, we will offer a refund or replacement. For full details of the Abpromise, please visit <https://www.abcam.co.jp/abpromise> or contact our technical team.

Terms and conditions

- Guarantee only valid for products bought direct from Abcam or one of our authorized distributors