


Anti-CaMKII alpha antibody ab103840

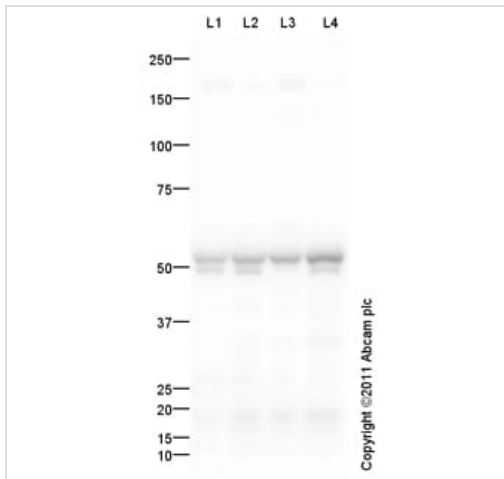
3 References [画像数 2](#)

製品の概要

製品名	Anti-CaMKII alpha antibody
製品の詳細	Rabbit polyclonal to CaMKII alpha
由来種	Rabbit
アプリケーション	適用あり: WB, IHC-P
種交差性	交差種: Mouse, Rat 交差が予測される動物種: Horse, Chicken, Cow, Dog, Human, Pig, Orangutan 
免疫原	Synthetic peptide within Human CaMKII alpha aa 400 to the C-terminus conjugated to keyhole limpet haemocyanin. The exact sequence is proprietary. (Peptide available as ab115931)
ポジティブ・コントロール	WB: Mouse brain; Rat brain; Mouse cortex; Rat cortex. IHC-P: FFPE rat brain tissue sections.
特記事項	<p>The Life Science industry has been in the grips of a reproducibility crisis for a number of years. Abcam is leading the way in addressing this with our range of recombinant monoclonal antibodies and knockout edited cell lines for gold-standard validation. Please check that this product meets your needs before purchasing.</p> <p>If you have any questions, special requirements or concerns, please send us an inquiry and/or contact our Support team ahead of purchase. Recommended alternatives for this product can be found below, along with publications, customer reviews and Q&As</p>

製品の特性

製品の状態	Liquid
保存方法	Shipped at 4°C. Store at +4°C short term (1-2 weeks). Upon delivery aliquot. Store at -20°C or -80°C. Avoid freeze / thaw cycle.
バッファー	pH: 7.40 Preservative: 0.02% Sodium azide Constituent: PBS
精製度	Batches of this product that have a concentration < 1mg/ml may have BSA added as a stabilising agent. If you would like information about the formulation of a specific lot, please contact our scientific support team who will be happy to help. Immunogen affinity purified



Western blot - Anti-CaMKII alpha antibody
(ab103840)

All lanes : Anti-CaMKII alpha antibody (ab103840) at 1 µg/ml

Lane 1 : Brain (Mouse) Tissue Lysate

Lane 2 : Brain (Rat) Tissue Lysate

Lane 3 : Mouse cortex Mouse Tissue Lysate

Lane 4 : Rat Cortex Tissue Lysate

Lysates/proteins at 10 µg per lane.

Secondary

All lanes : Goat Anti-Rabbit IgG H&L (HRP) preadsorbed
(**ab97080**) at 1/5000 dilution

Developed using the ECL technique.

Performed under reducing conditions.

Predicted band size: 54 kDa

Observed band size: 50,54 kDa

Exposure time: 1 minute

Please note: All products are "FOR RESEARCH USE ONLY. NOT FOR USE IN DIAGNOSTIC PROCEDURES"

Our Abpromise to you: Quality guaranteed and expert technical support

- Replacement or refund for products not performing as stated on the datasheet
- Valid for 12 months from date of delivery
- Response to your inquiry within 24 hours
- We provide support in Chinese, English, French, German, Japanese and Spanish
- Extensive multi-media technical resources to help you
- We investigate all quality concerns to ensure our products perform to the highest standards

If the product does not perform as described on this datasheet, we will offer a refund or replacement. For full details of the Abpromise, please visit <https://www.abcam.co.jp/abpromise> or contact our technical team.

Terms and conditions

- Guarantee only valid for products bought direct from Abcam or one of our authorized distributors