




Anti-Calreticulin antibody ab94935

1 References [画像数 1](#)

製品の概要

製品名	Anti-Calreticulin antibody
製品の詳細	Chicken polyclonal to Calreticulin
由来種	Chicken
アプリケーション	適用あり: WB
種交差性	交差種: Mouse, Human 交差が予測される動物種: Rabbit, Cow, Pig, Zebrafish, Cynomolgus monkey 
免疫原	Synthetic peptide corresponding to Mouse Calreticulin aa 24-43. Sequence: KEQFLDGDAWTNRWVESKHK (Peptide available as ab5838) <div>  Run BLAST with  Run BLAST with </div>
ポジティブ・コントロール	WB: A-549, HEK-293 cell lysate; Mouse Brain lysate.
特記事項	<p>The Life Science industry has been in the grips of a reproducibility crisis for a number of years. Abcam is leading the way in addressing this with our range of recombinant monoclonal antibodies and knockout edited cell lines for gold-standard validation. Please check that this product meets your needs before purchasing.</p> <p>If you have any questions, special requirements or concerns, please send us an inquiry and/or contact our Support team ahead of purchase. Recommended alternatives for this product can be found below, along with publications, customer reviews and Q&As</p>

製品の特性

製品の状態	Liquid
保存方法	Shipped at 4°C. Upon delivery aliquot and store at -20°C. Avoid repeated freeze / thaw cycles.
バッファー	Preservative: 0.05% Sodium azide Constituent: 0.1% BSA
精製度	Immunogen affinity purified
ポリ/モノ	ポリクローナル
アイソタイプ	IgY

アプリケーション

The Abpromise guarantee

Abpromise保証は、次のテスト済みアプリケーションにおけるab94935の使用に適用されます

アプリケーションノートには、推奨の開始希釈率がありますが、適切な希釈率につきましてはご検討ください。

アプリケーション	Abreviews	特記事項
WB		1/1000. Detects a band of approximately 60-66 kDa (predicted molecular weight: 48 kDa).

ターゲット情報

機能

Molecular calcium-binding chaperone promoting folding, oligomeric assembly and quality control in the ER via the calreticulin/calnexin cycle. This lectin interacts transiently with almost all of the monoglucosylated glycoproteins that are synthesized in the ER. Interacts with the DNA-binding domain of NR3C1 and mediates its nuclear export.

配列類似性

Belongs to the calreticulin family.

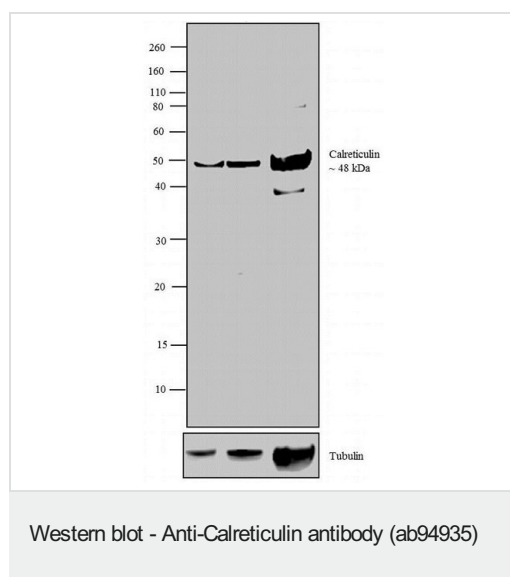
ドメイン

Can be divided into a N-terminal globular domain, a proline-rich P-domain forming an elongated arm-like structure and a C-terminal acidic domain. The P-domain binds one molecule of calcium with high affinity, whereas the acidic C-domain binds multiple calcium ions with low affinity. The interaction with glycans occurs through a binding site in the globular lectin domain. The zinc binding sites are localized to the N-domain. Associates with PDIA3 through the tip of the extended arm formed by the P-domain.

細胞内局在

Endoplasmic reticulum lumen. Cytoplasm > cytosol. Secreted > extracellular space > extracellular matrix. Cell surface. Also found in cell surface (T cells), cytosol and extracellular matrix. Associated with the lytic granules in the cytolytic T-lymphocytes.

画像



All lanes : Anti-Calreticulin antibody (ab94935) at 1/2000 dilution

Lane 1 : A-549 cell lysate

Lane 2 : HEK-293 cell lysate

Lane 3 : Mouse Brain lysate

Lysates/proteins at 30 µg per lane.

Secondary

All lanes : Goat anti-Chicken IgY (H+L) Secondary Antibody, HRP conjugate at 0.4 µg/ml

Predicted band size: 48 kDa

Please note: All products are "FOR RESEARCH USE ONLY. NOT FOR USE IN DIAGNOSTIC PROCEDURES"

Our Abpromise to you: Quality guaranteed and expert technical support

- Replacement or refund for products not performing as stated on the datasheet
- Valid for 12 months from date of delivery
- Response to your inquiry within 24 hours

- We provide support in Chinese, English, French, German, Japanese and Spanish
- Extensive multi-media technical resources to help you
- We investigate all quality concerns to ensure our products perform to the highest standards

If the product does not perform as described on this datasheet, we will offer a refund or replacement. For full details of the Abpromise, please visit <https://www.abcam.co.jp/abpromise> or contact our technical team.

Terms and conditions

- Guarantee only valid for products bought direct from Abcam or one of our authorized distributors