


Anti-Calprotectin (S100A8 + S100A9) antibody [27E10] ab17050

★★★★★ [2 Abreviews](#) [12 References](#) [画像数 3](#)

製品の概要

製品名	Anti-Calprotectin (S100A8 + S100A9) antibody [27E10]
製品の詳細	Mouse monoclonal [27E10] to Calprotectin (S100A8 + S100A9)
由来種	Mouse
特異性	Does not react with lymphocytes or platelets.
アプリケーション	適用あり: Flow Cyt, IHC-Fr, IA 適用なし: FuncS
種交差性	交差種: Human 交差が予測される動物種: Rhesus monkey  非交差種: Mouse
免疫原	Tissue, cells or virus corresponding to Human Calprotectin (S100A8 + S100A9).
エピトープ	ab17050 recognises an epitope on the MRP8 + MRP14 complex which is not exposed on the individual subunits.
ポジティブ・コントロール	Flow Cyt: Human peripheral blood mononuclear cells. IHC-Fr: Human tonsil.
特記事項	<p>ab17050 can be used for early detection of inflammatory macrophages, characterisation of tumorous tissues and monitoring of peripheral blood cell cultures.</p> <p>The Life Science industry has been in the grips of a reproducibility crisis for a number of years. Abcam is leading the way in addressing this with our range of recombinant monoclonal antibodies and knockout edited cell lines for gold-standard validation. Please check that this product meets your needs before purchasing.</p> <p>If you have any questions, special requirements or concerns, please send us an inquiry and/or contact our Support team ahead of purchase. Recommended alternatives for this product can be found below, along with publications, customer reviews and Q&As</p>

製品の特性

製品の状態	Liquid
保存方法	Shipped at 4°C. Upon delivery aliquot and store at -20°C. Avoid freeze / thaw cycles.
バッファー	Preservative: 0.02% Sodium azide Constituents: PBS, 0.1% BSA
精製度	Protein G purified
特記事項 (精製)	0.2 µm filtered

一次抗体 備考	ab17050 can be used for early detection of inflammatory macrophages, characterisation of tumorous tissues and monitoring of peripheral blood cell cultures.
ポリ/モノ	モノクローナル
クローン名	27E10
アイソタイプ	IgG1

アプリケーション

The Abpromise guarantee Abpromise保証は、次のテスト済みアプリケーションにおけるab17050の使用に適用されます
アプリケーションノートには、推奨の開始希釈率がありますが、適切な希釈率につきましてはご検討ください。

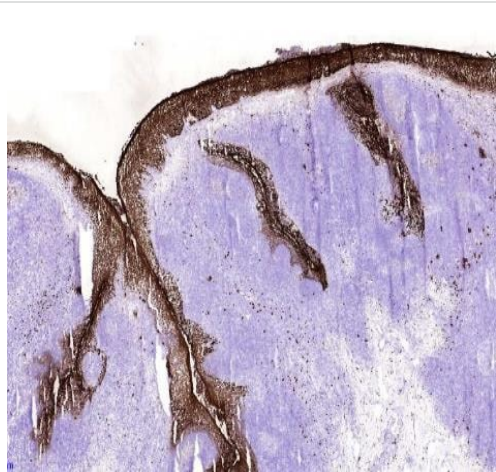
アプリケーション	Abreviews	特記事項
Flow Cyt		1/10. ab170190 - Mouse monoclonal IgG1, is suitable for use as an isotype control with this antibody.
IHC-Fr	★★★★★ (1)	1/100.
IA		Use a concentration of 0.5 - 2 µg/ml.

追加情報 Is unsuitable for FuncS.

ターゲット情報

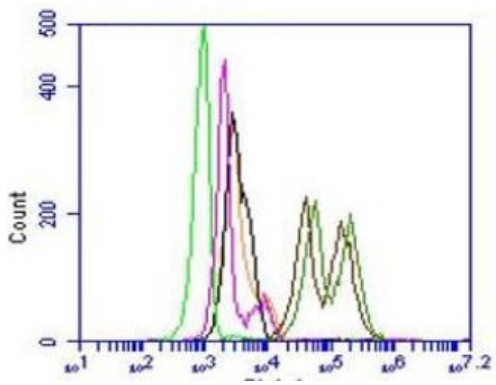
細胞内局在 S100A9: Secreted. Cytoplasm. Cytoplasm > cytoskeleton. Cell membrane. Associates with tubulin filaments in activated monocytes. Targeted to the cell surface upon calcium influx. Released from blood leukocytes upon exposure to CSF2/GM-CSF, bacterial lipopolysaccharide (LPS) and during inflammatory processes. Serum levels are high in patients suffering from chronic inflammation. S100A8: Secreted. Cytoplasm. Cytoplasm, cytoskeleton. Cell membrane. Predominantly localized in the cytoplasm. Upon elevation of the intracellular calcium level, translocated from the cytoplasm to the cytoskeleton and the cell membrane. Upon neutrophil activation or endothelial adhesion of monocytes, is secreted via a microtubule-mediated, alternative pathway.

画像



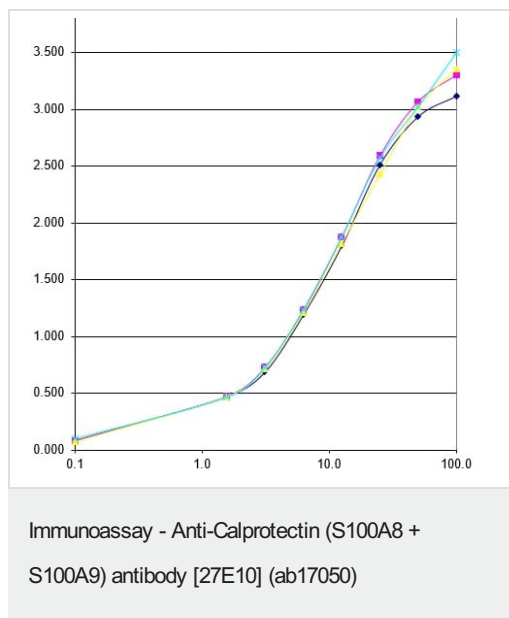
Staining of squamous epithelia of frozen human tonsil section with ab17050 at a dilution of 1/100.

Immunohistochemistry (Frozen sections) - Anti-Calprotectin (S100A8 + S100A9) antibody [27E10] (ab17050)



Flow cytometric detection of S100A8 + S100A9 in fresh human peripheral blood mononuclear cells (PBMC) with ab17050. The green and black line represent the isotype control in 2 concentrations, the pink line the secondary antibody only and the green and brown line ab17050 in a concentration of 1 and 3 μ l/200000 cells.

Flow Cytometry - Anti-Calprotectin (S100A8 + S100A9) antibody [27E10] (ab17050)



ab17050 used as capture antibody. Different concentrations were tested (0.5-2 µg/ml).

Please note: All products are "FOR RESEARCH USE ONLY. NOT FOR USE IN DIAGNOSTIC PROCEDURES"

Our Abpromise to you: Quality guaranteed and expert technical support

- Replacement or refund for products not performing as stated on the datasheet
- Valid for 12 months from date of delivery
- Response to your inquiry within 24 hours
- We provide support in Chinese, English, French, German, Japanese and Spanish
- Extensive multi-media technical resources to help you
- We investigate all quality concerns to ensure our products perform to the highest standards

If the product does not perform as described on this datasheet, we will offer a refund or replacement. For full details of the Abpromise, please visit <https://www.abcam.co.jp/abpromise> or contact our technical team.

Terms and conditions

- Guarantee only valid for products bought direct from Abcam or one of our authorized distributors