

Anti-Calpain 1 antibody ab39170

32 References [画像数 1](#)

製品の概要

製品名	Anti-Calpain 1 antibody
製品の詳細	Rabbit polyclonal to Calpain 1
由来種	Rabbit
特異性	This antibody binds to reduced and non reduced Calpain 1. It reacts with Domain IV of Calpain 1, and detects both latent and aminoprocessed (activated) Calpain 1. It but does not cross react with the other calpain family members (Calpain 2, calpain 94, ncl 2, ncl 3, etc.).
アプリケーション	適用あり: IHC (PFA fixed), ICC/IF, WB
種交差性	交差種: Mouse, Rat, Human
免疫原	Synthetic peptide based on Domain IV of the large subunit of Human Calpain 1. (Peptide available as ab41300 .)
特記事項	<p>The Life Science industry has been in the grips of a reproducibility crisis for a number of years. Abcam is leading the way in addressing this with our range of recombinant monoclonal antibodies and knockout edited cell lines for gold-standard validation. Please check that this product meets your needs before purchasing.</p> <p>If you have any questions, special requirements or concerns, please send us an inquiry and/or contact our Support team ahead of purchase. Recommended alternatives for this product can be found below, along with publications, customer reviews and Q&As</p>

製品の特性

製品の状態	Liquid
保存方法	Shipped at 4°C. Store at +4°C short term (1-2 weeks). Upon delivery aliquot. Store at -20°C long term.
バッファー	Preservative: 0.05% Sodium azide Constituent: 50% Glycerol
精製度	Immunogen affinity purified
ポリモノ	ポリクローナル
アイソタイプ	IgG

アプリケーション

The Abpromise guarantee

Abpromise保証は、次のテスト済みアプリケーションにおけるab39170の使用に適用されます

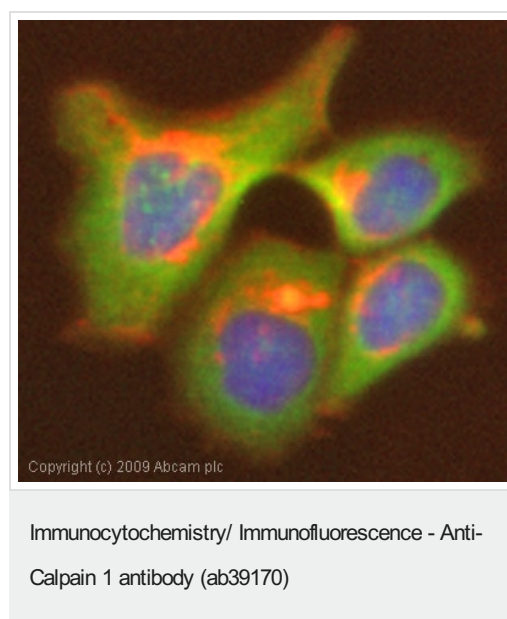
アプリケーションノートには、推奨の開始希釈率がありますが、適切な希釈率につきましてはご検討ください。

アプリケーション	Abreviews	特記事項
IHC (PFA fixed)		Use at an assay dependent concentration.
ICC/IF		Use a concentration of 1 µg/ml.
WB		Use at an assay dependent concentration. Predicted molecular weight: 82 kDa. 1/1000 - 1/5000. Detects a band of approximately 75 kDa (predicted molecular weight: 82 kDa). Dilution optimised using Chromogenic detection.

ターゲット情報

機能	Calcium-regulated non-lysosomal thiol-protease which catalyze limited proteolysis of substrates involved in cytoskeletal remodeling and signal transduction.
組織特異性	Ubiquitous.
配列類似性	Belongs to the peptidase C2 family. Contains 1 calpain catalytic domain. Contains 4 EF-hand domains.
細胞内局在	Cytoplasm. Cell membrane. Translocates to the plasma membrane upon Ca(2+) binding.

画像



ICC/IF image of ab39170 stained MCF-7 cells. The cells were 100% methanol fixed (5 min) and then incubated in 1%BSA / 10% normal goat serum / 0.3M glycine in 0.1% PBS-Tween for 1h to permeabilise the cells and block non-specific protein-protein interactions. The cells were then incubated with the antibody (ab39170, 1µg/ml) overnight at +4°C. The secondary antibody (green) was Alexa Fluor® 488 goat anti-rabbit IgG (H+L) used at a 1/1000 dilution for 1h. Alexa Fluor® 594 WGA was used to label plasma membranes (red) at a 1/200 dilution for 1h. DAPI was used to stain the cell nuclei (blue) at a concentration of 1.43µM.

Please note: All products are "FOR RESEARCH USE ONLY. NOT FOR USE IN DIAGNOSTIC PROCEDURES"

Our Abpromise to you: Quality guaranteed and expert technical support

- Replacement or refund for products not performing as stated on the datasheet
- Valid for 12 months from date of delivery
- Response to your inquiry within 24 hours

- We provide support in Chinese, English, French, German, Japanese and Spanish
- Extensive multi-media technical resources to help you
- We investigate all quality concerns to ensure our products perform to the highest standards

If the product does not perform as described on this datasheet, we will offer a refund or replacement. For full details of the Abpromise, please visit <https://www.abcam.co.jp/abpromise> or contact our technical team.

Terms and conditions

- Guarantee only valid for products bought direct from Abcam or one of our authorized distributors