

### Anti-Calpain 1 antibody ab28258

★★★★★ [6 Abreviews](#) [24 References](#) [画像数 1](#)

#### 製品の概要

製品名	Anti-Calpain 1 antibody
製品の詳細	Rabbit polyclonal to Calpain 1
由来種	Rabbit
特異性	ab28258 recognizes Domain I of the large subunit of Calpain 1. The antibody does not recognize amino-processed Calpain 1, and can be used to discriminate between latent and amino-processed forms. Also ab28258 does not recognize the other calpain family members (M calpain, calpain 94, ncl 2, ncl 3, etc.).
アプリケーション	<b>適用あり:</b> WB
種交差性	<b>交差種:</b> Recombinant fragment
免疫原	Synthetic peptide corresponding to Human Calpain 1. (Peptide available as <a href="#">ab41299</a> )
特記事項	<p>The Life Science industry has been in the grips of a reproducibility crisis for a number of years. Abcam is leading the way in addressing this with our range of recombinant monoclonal antibodies and knockout edited cell lines for gold-standard validation. Please check that this product meets your needs before purchasing.</p> <p>If you have any questions, special requirements or concerns, please send us an inquiry and/or contact our Support team ahead of purchase. Recommended alternatives for this product can be found below, along with publications, customer reviews and Q&amp;As</p>

#### 製品の特性

製品の状態	Liquid
保存方法	Shipped at 4°C. Store at +4°C short term (1-2 weeks). Upon delivery aliquot. Store at -20°C long term.
バッファー	Constituents: PBS, 50% Glycerol
精製度	Immunogen affinity purified
特記事項(精製)	The antibody has been peptide-affinity purified.
ポリ/モノ	ポリクローナル
アイソタイプ	IgG

## アプリケーション

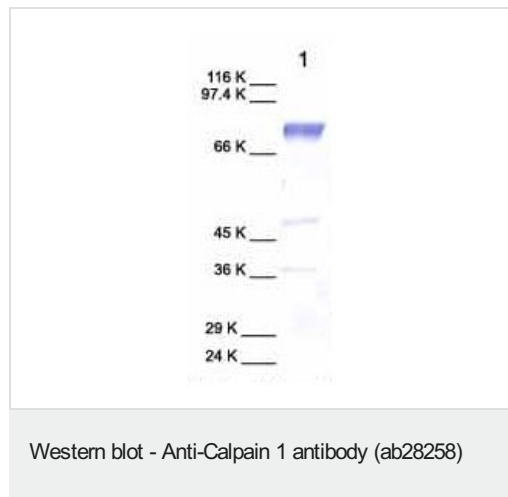
**The Abpromise guarantee**      **Abpromise保証は、** 次のテスト済みアプリケーションにおけるab28258の使用に適用されます  
アプリケーションノートには、推奨の開始希釈率がありますが、適切な希釈率につきましてはご検討ください。

アプリケーション	Abreviews	特記事項
WB	★★★★★ (3)	1/1000 - 1/5000. Predicted molecular weight: 82 kDa. 1/1000, when using colorimetric substrates such as BCIP/NBT - 1/5000, when using chemiluminescent substrates. But note that when used against the reduced protein, ab28258 identifies bands at 80 kDa, 68 kDa, and a series of further cleaved forms. Dilution optimised using Chromogenic detection.

## ターゲット情報

機能	Calcium-regulated non-lysosomal thiol-protease which catalyze limited proteolysis of substrates involved in cytoskeletal remodeling and signal transduction.
組織特異性	Ubiquitous.
配列類似性	Belongs to the peptidase C2 family. Contains 1 calpain catalytic domain. Contains 4 EF-hand domains.
細胞内局在	Cytoplasm. Cell membrane. Translocates to the plasma membrane upon Ca(2+) binding.

## 画像



Anti-Calpain 1 antibody (ab28258) at 1/1000 dilution + Calpain 1 at 10 µg

**Predicted band size:** 82 kDa

**Observed band size:** 80 kDa

**Please note:** All products are "FOR RESEARCH USE ONLY. NOT FOR USE IN DIAGNOSTIC PROCEDURES"

## Our Abpromise to you: Quality guaranteed and expert technical support

- Replacement or refund for products not performing as stated on the datasheet
- Valid for 12 months from date of delivery

- Response to your inquiry within 24 hours
- We provide support in Chinese, English, French, German, Japanese and Spanish
- Extensive multi-media technical resources to help you
- We investigate all quality concerns to ensure our products perform to the highest standards

If the product does not perform as described on this datasheet, we will offer a refund or replacement. For full details of the Abpromise, please visit <https://www.abcam.co.jp/abpromise> or contact our technical team.

#### **Terms and conditions**

---

- Guarantee only valid for products bought direct from Abcam or one of our authorized distributors