

Anti-Calnexin antibody - ER Membrane Marker ab75801

★★★★★ [1 Abreviews](#) [58 References](#) [画像数 4](#)

製品の概要

製品名	Anti-Calnexin antibody - ER Membrane Marker
製品の詳細	Rabbit polyclonal to Calnexin - ER Membrane Marker
由来種	Rabbit
アプリケーション	適用あり: ICC/IF, IHC-P, IP, WB
種交差性	交差種: Mouse, Human
免疫原	Synthetic peptide corresponding to Dog Calnexin (C terminal) conjugated to Keyhole Limpet Haemocyanin (KLH).
特記事項	<p>References regarding specificity</p> <p>Horner SM <i>et al.</i> Mitochondrial-associated endoplasmic reticulum membranes (MAM) form innate immune synapses and are targeted by hepatitis C virus. <i>Proc Natl Acad Sci U S A</i> 108:14590-5 (2011). PubMed: 21844353</p> <p>Myhill N <i>et al.</i> The subcellular distribution of calnexin is mediated by PACS-2. <i>Mol Biol Cell</i> 19:2777-88 (2008). PubMed: 18417615</p> <p>Yoshimura SI <i>et al.</i> Direct targeting of cis-Golgi matrix proteins to the Golgi apparatus. <i>J Cell Sci</i> 114:4105-15 (2001). PubMed: 11739642</p> <p>The Life Science industry has been in the grips of a reproducibility crisis for a number of years. Abcam is leading the way in addressing this with our range of recombinant monoclonal antibodies and knockout edited cell lines for gold-standard validation. Please check that this product meets your needs before purchasing.</p> <p>If you have any questions, special requirements or concerns, please send us an inquiry and/or contact our Support team ahead of purchase. Recommended alternatives for this product can be found below, along with publications, customer reviews and Q&As</p>

製品の特性

製品の状態	Liquid
保存方法	Shipped at 4°C. Store at +4°C short term (1-2 weeks). Upon delivery aliquot. Store at -20°C. Avoid freeze / thaw cycle.
バッファー	Preservative: 0.09% Sodium azide Constituents: PBS, 50% Glycerol
精製度	Immunogen affinity purified

ポリ/モノ

ポリクローナル

アイソタイプ

IgG

アプリケーション

The Abpromise guarantee

Abpromise保証は、次のテスト済みアプリケーションにおけるab75801の使用に適用されます
アプリケーションノートには、推奨の開始希釈率がありますが、適切な希釈率につきましてはご検討ください。

アプリケーション	Abreviews	特記事項
ICC/IF		1/100.
IHC-P		1/100.
IP		1/100.
WB		1/2000. Detects a band of approximately 90 kDa (predicted molecular weight: 90 kDa).

ターゲット情報

機能

Calcium-binding protein that interacts with newly synthesized glycoproteins in the endoplasmic reticulum. It may act in assisting protein assembly and/or in the retention within the ER of unassembled protein subunits. It seems to play a major role in the quality control apparatus of the ER by the retention of incorrectly folded proteins.

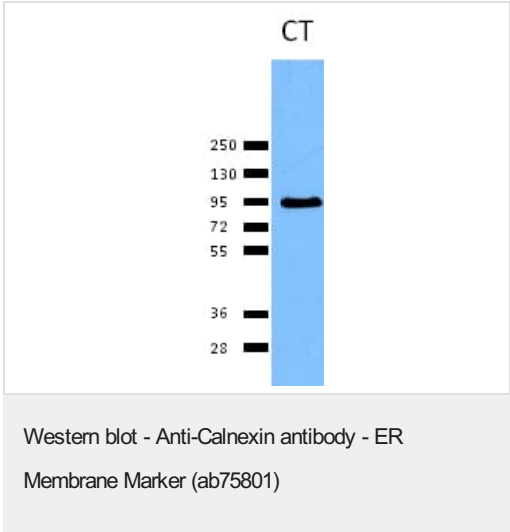
配列類似性

Belongs to the calreticulin family.

細胞内局在

Endoplasmic reticulum membrane. Melanosome. Identified by mass spectrometry in melanosome fractions from stage I to stage IV.

画像

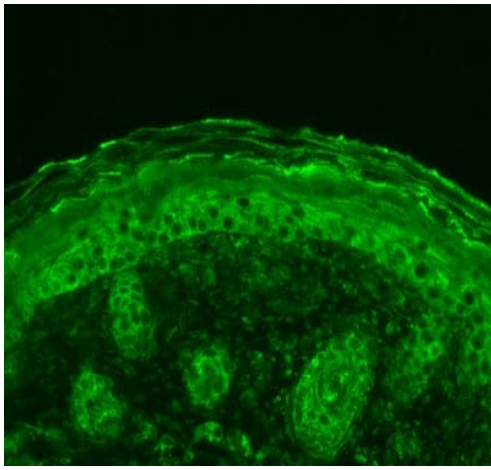


Anti-Calnexin antibody - ER Membrane Marker (ab75801) at 1/2000 dilution ((in TBS with 0.05% TW-20)) + HeLa cell lysate

Secondary
An HRP-conjugated goat anti-rabbit IgG

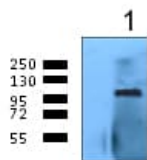
Developed using the ECL technique.

Predicted band size: 90 kDa



Immunohistochemistry (Formalin/PFA-fixed paraffin-embedded sections) - Anti-Calnexin antibody - ER Membrane Marker (ab75801)

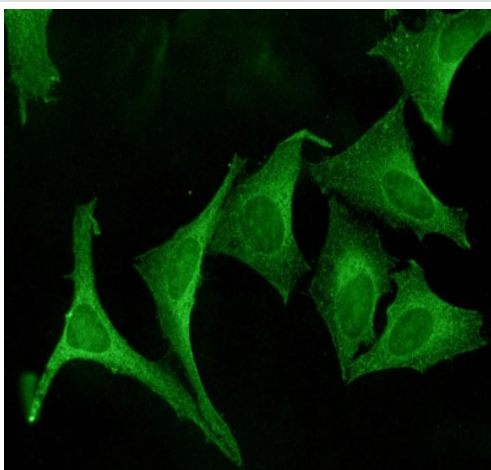
ab75801 staining Calnexin in juvenile mouse backskin tissue section by Immunohistochemistry (Formalin/ PFA fixed paraffin-embedded tissue sections).



Immunoprecipitation - Anti-Calnexin antibody - ER Membrane Marker (ab75801)

ab75801 used in Immunoprecipitation of Calnexin from Human HeLa cells. The antibody was used at 20µl per 1 ml of cell lysate.

20µl of protein G beads were used in Immunoprecipitation.



Immunocytochemistry/ Immunofluorescence - Anti-Calnexin antibody - ER Membrane Marker (ab75801)

ab75801 staining Calnexin in HeLa cells by ICC/IF (Immunocytochemistry/immunofluorescence). Cells were fixed with 4% PFA for 20 minutes at room temperature. Samples were incubated with primary antibody (1/100) for 1 hour at room temperature. A Fluorescein-conjugated goat anti-rabbit IgG secondary antibody was used.

Our Abpromise to you: Quality guaranteed and expert technical support

- Replacement or refund for products not performing as stated on the datasheet
- Valid for 12 months from date of delivery
- Response to your inquiry within 24 hours
- We provide support in Chinese, English, French, German, Japanese and Spanish
- Extensive multi-media technical resources to help you
- We investigate all quality concerns to ensure our products perform to the highest standards

If the product does not perform as described on this datasheet, we will offer a refund or replacement. For full details of the Abpromise, please visit <https://www.abcam.co.jp/abpromise> or contact our technical team.

Terms and conditions

- Guarantee only valid for products bought direct from Abcam or one of our authorized distributors