

### Anti-Calmodulin 1/2/3 antibody ab231274

画像数 2

#### 製品の概要

製品名	Anti-Calmodulin 1/2/3 antibody
製品の詳細	Rabbit polyclonal to Calmodulin 1/2/3
由来種	Rabbit
アプリケーション	適用あり: WB
種交差性	交差種: Rat 交差が予測される動物種: Mouse, Sheep, Rabbit, Chicken, Cow, Human, Zebrafish, Orangutan



免疫原	Recombinant full length protein (His-tag) corresponding to Chicken Calmodulin 1/2/3 aa 1 to the C-terminus. Expressed in E.coli. N-terminal tag. Database link: <a href="#">P62149</a>
-----	-------------------------------------------------------------------------------------------------------------------------------------------------------------------------------------------

[Run BLAST with](#)

[Run BLAST with](#)

ポジティブ・コントロール	WB: Rat cerebrum lysate. Recombinant chicken Calmodulin protein.
--------------	------------------------------------------------------------------

特記事項	<p>The Life Science industry has been in the grips of a reproducibility crisis for a number of years. Abcam is leading the way in addressing this with our range of recombinant monoclonal antibodies and knockout edited cell lines for gold-standard validation. Please check that this product meets your needs before purchasing.</p> <p>If you have any questions, special requirements or concerns, please send us an inquiry and/or contact our Support team ahead of purchase. Recommended alternatives for this product can be found below, along with publications, customer reviews and Q&amp;As</p>
------	-----------------------------------------------------------------------------------------------------------------------------------------------------------------------------------------------------------------------------------------------------------------------------------------------------------------------------------------------------------------------------------------------------------------------------------------------------------------------------------------------------------------------------------------------------------------------------------------------------------------

#### 製品の特性

製品の状態	Liquid
保存方法	Shipped at 4°C. Store at +4°C short term (1-2 weeks). Upon delivery aliquot. Store at -20°C long term. Avoid freeze / thaw cycle.
バッファー	pH: 7.40 Preservative: 0.02% Sodium azide Constituents: 44.12% PBS, 55.77% Glycerol (glycerin, glycerine)
精製度	Immunogen affinity purified
特記事項(精製)	Followed by Protein A affinity chromatography.
ポリ/モノ	ポリクローナル

アイソタイプ

IgG

## アプリケーション

### The Abpromise guarantee

**Abpromise保証は、次のテスト済みアプリケーションにおけるab231274の使用に適用されます**

アプリケーションノートには、推奨の開始希釈率がありますが、適切な希釈率につきましてはご検討ください。

アプリケーション	Abreviews	特記事項
WB		Use a concentration of 0.2 - 2 µg/ml.

## ターゲット情報

### 関連性

Function: Calmodulin mediates the control of a large number of enzymes and other proteins by Ca(2+). Among the enzymes to be stimulated by the calmodulin-Ca(2+) complex are a number of protein kinases and phosphatases. Together with CEP110 and centrin, is involved in a genetic pathway that regulates the centrosome cycle and progression through cytokinesis.

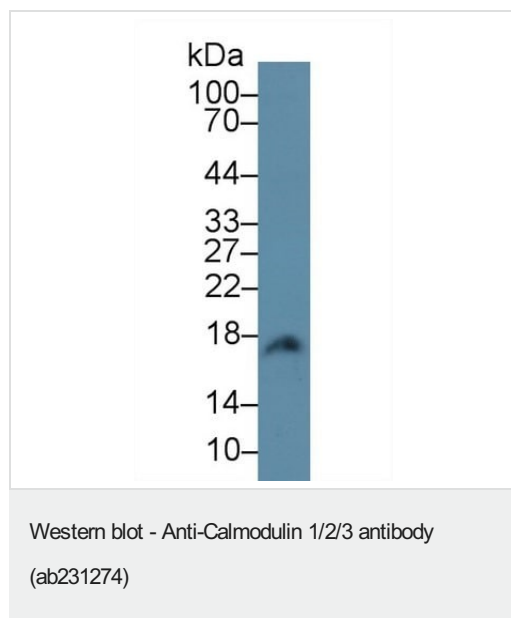
### 細胞内局在

Cytoplasm > cytoskeleton > spindle. Cytoplasm > cytoskeleton > spindle pole. Distributed throughout the cell during interphase, but during mitosis becomes dramatically localized to the spindle poles and the spindle microtubules.

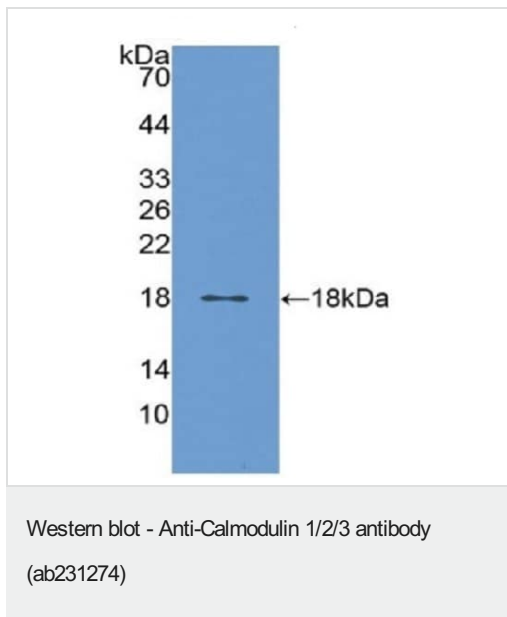
### 製品の状態

There are three genes which encode an identical calcium binding protein which is one of the four subunits of phosphorylase kinase.

## 画像



Anti-Calmodulin 1/2/3 antibody (ab231274) at 2 µg/ml + Rat cerebrum lysate



Anti-Calmodulin 1/2/3 antibody (ab231274) at 2  $\mu$ g/ml +  
Recombinant chicken Calmodulin protein

**Please note:** All products are "FOR RESEARCH USE ONLY. NOT FOR USE IN DIAGNOSTIC PROCEDURES"

### Our Abpromise to you: Quality guaranteed and expert technical support

---

- Replacement or refund for products not performing as stated on the datasheet
- Valid for 12 months from date of delivery
- Response to your inquiry within 24 hours
- We provide support in Chinese, English, French, German, Japanese and Spanish
- Extensive multi-media technical resources to help you
- We investigate all quality concerns to ensure our products perform to the highest standards

If the product does not perform as described on this datasheet, we will offer a refund or replacement. For full details of the Abpromise, please visit <https://www.abcam.co.jp/abpromise> or contact our technical team.

### Terms and conditions

---

- Guarantee only valid for products bought direct from Abcam or one of our authorized distributors