

# Anti-Calmodulin 1/2/3 antibody ab155550

1 References [画像数 2](#)

医薬用外劇物

### 製品の概要

製品名	Anti-Calmodulin 1/2/3 antibody
製品の詳細	Rabbit polyclonal to Calmodulin 1/2/3
由来種	Rabbit
アプリケーション	<b>適用あり:</b> WB, ICC/IF
種交差性	<b>交差種:</b> Mouse, Human <b>交差が予測される動物種:</b> Rat, Rabbit, <i>Xenopus laevis</i> , <i>Xenopus tropicalis</i> 
免疫原	Recombinant fragment corresponding to Human Calmodulin 1/2/3 aa 1-165.
ポジティブ・コントロール	Mouse brain whole cell lysate; HeLa cells.
特記事項	<p>The Life Science industry has been in the grips of a reproducibility crisis for a number of years. Abcam is leading the way in addressing this with our range of recombinant monoclonal antibodies and knockout edited cell lines for gold-standard validation. Please check that this product meets your needs before purchasing.</p> <p>If you have any questions, special requirements or concerns, please send us an inquiry and/or contact our Support team ahead of purchase. Recommended alternatives for this product can be found below, along with publications, customer reviews and Q&amp;As</p>

### 製品の特性

製品の状態	Liquid
保存方法	Shipped at 4°C. Upon delivery aliquot. Store at -20°C or -80°C. Avoid freeze / thaw cycle.
バッファー	pH: 7.00 Preservative: 0.01% Thimerosal (merthiolate) Constituents: 79.99% PBS, 20% Glycerol (glycerin, glycerine)
精製度	Immunogen affinity purified
ポリ/モノ	ポリクローナル
アイソタイプ	IgG

### アプリケーション

## The Abpromise guarantee

**Abpromise保証は、**次のテスト済みアプリケーションにおけるab155550の使用に適用されます

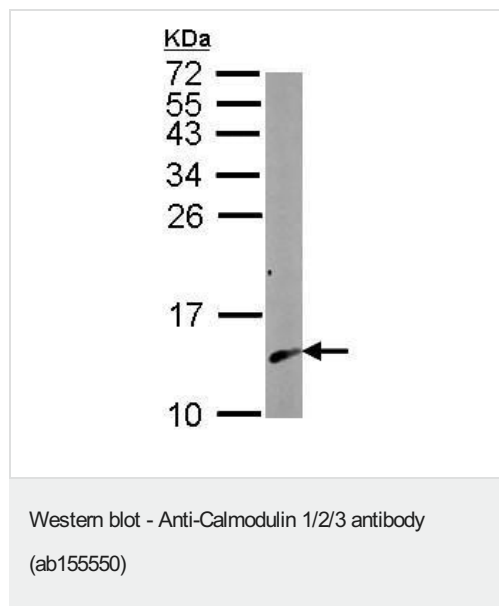
アプリケーションノートには、推奨の開始希釈率がありますが、適切な希釈率につきましてはご確認ください。

アプリケーション	Abreviews	特記事項
WB		1/500 - 1/3000. Predicted molecular weight: 17 kDa.
ICC/IF		1/100 - 1/1000.

## ターゲット情報

関連性	Function: Calmodulin mediates the control of a large number of enzymes and other proteins by Ca(2+). Among the enzymes to be stimulated by the calmodulin-Ca(2+) complex are a number of protein kinases and phosphatases. Together with CEP110 and centrin, is involved in a genetic pathway that regulates the centrosome cycle and progression through cytokinesis.
細胞内局在	Cytoplasm > cytoskeleton > spindle. Cytoplasm > cytoskeleton > spindle pole. Distributed throughout the cell during interphase, but during mitosis becomes dramatically localized to the spindle poles and the spindle microtubules.
製品の状態	There are three genes which encode an identical calcium binding protein which is one of the four subunits of phosphorylase kinase.

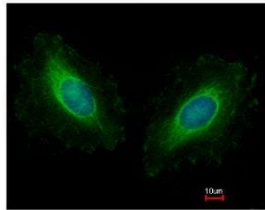
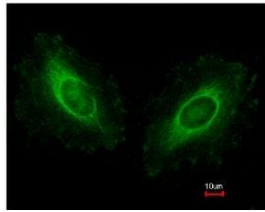
## 画像



Anti-Calmodulin 1/2/3 antibody (ab155550) at 1/1000 dilution +  
Mouse brain whole cell lysate at 50 µg

**Predicted band size:** 17 kDa

15% SDS PAGE



Immunofluorescence analysis of methanol-fixed HeLa cells labeling Calmodulin with ab155550 at 1/500 dilution (green). The image in the lower panel is costained with Hoechst 33342 (blue).

Immunocytochemistry/ Immunofluorescence - Anti-Calmodulin 1/2/3 antibody (ab155550)

**Please note:** All products are "FOR RESEARCH USE ONLY. NOT FOR USE IN DIAGNOSTIC PROCEDURES"

### Our Abpromise to you: Quality guaranteed and expert technical support

- Replacement or refund for products not performing as stated on the datasheet
- Valid for 12 months from date of delivery
- Response to your inquiry within 24 hours
- We provide support in Chinese, English, French, German, Japanese and Spanish
- Extensive multi-media technical resources to help you
- We investigate all quality concerns to ensure our products perform to the highest standards

If the product does not perform as described on this datasheet, we will offer a refund or replacement. For full details of the Abpromise, please visit <https://www.abcam.co.jp/abpromise> or contact our technical team.

### Terms and conditions

- Guarantee only valid for products bought direct from Abcam or one of our authorized distributors