

Anti-CALHM1 antibody ab106561

1 References [画像数 3](#)

製品の概要

製品名	Anti-CALHM1 antibody
製品の詳細	Rabbit polyclonal to CALHM1
由来種	Rabbit
特異性	This antibody is predicted to not crossreact with CALHM2 or CALHM3.
アプリケーション	適用あり: ICC/IF, WB, IHC-P
種交差性	交差種: Rat
免疫原	Synthetic peptide corresponding to 17 amino acids near the amino terminus of Human CALHM1 (NP_001001412).
ポジティブ・コントロール	Rat liver tissue lysate; Rat liver tissue
特記事項	<p>The Life Science industry has been in the grips of a reproducibility crisis for a number of years. Abcam is leading the way in addressing this with our range of recombinant monoclonal antibodies and knockout edited cell lines for gold-standard validation. Please check that this product meets your needs before purchasing.</p> <p>If you have any questions, special requirements or concerns, please send us an inquiry and/or contact our Support team ahead of purchase. Recommended alternatives for this product can be found below, along with publications, customer reviews and Q&As</p>

製品の特性

製品の状態	Liquid
保存方法	Shipped at 4°C. Store at 4°C (stable for up to 12 months).
バッファー	<p>pH: 7.2</p> <p>Preservative: 0.02% Sodium azide</p> <p>Constituent: PBS</p>
精製度	Immunogen affinity purified
ポリ/モノ	ポリクローナル
アイソタイプ	IgG

アプリケーション

The Abpromise guarantee

Abpromise保証は、次のテスト済みアプリケーションにおけるab106561の使用に適用されます

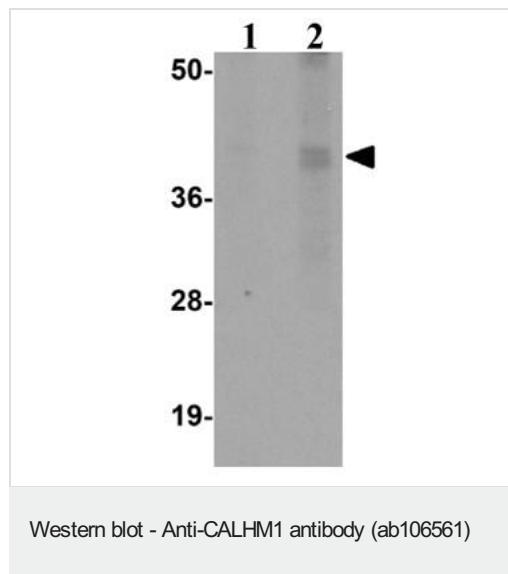
アプリケーションノートには、推奨の開始希釈率がありますが、適切な希釈率につきましてはご確認ください。

アプリケーション	Abreviews	特記事項
ICC/IF		Use a concentration of 20 µg/ml.
WB		Use a concentration of 1 - 2 µg/ml. Predicted molecular weight: 38 kDa.
IHC-P		Use a concentration of 5 µg/ml.

ターゲット情報

機能	May be a pore-forming ion channel. Controls cytosolic Ca(2+) permeability and cytosolic Ca(2+) concentration. Controls amyloid precursor protein (APP) proteolysis and aggregated amyloid-beta (Abeta) peptides levels in a Ca(2+) dependent manner.
組織特異性	Predominantly expressed in adult brain. Detected also in retinoic acid-differentiated SH-SY5Y cells.
配列類似性	Belongs to the FAM26 family.
細胞内局在	Cell membrane. Endoplasmic reticulum membrane. Colocalizes with HSPA5 at the endoplasmic reticulum.

画像



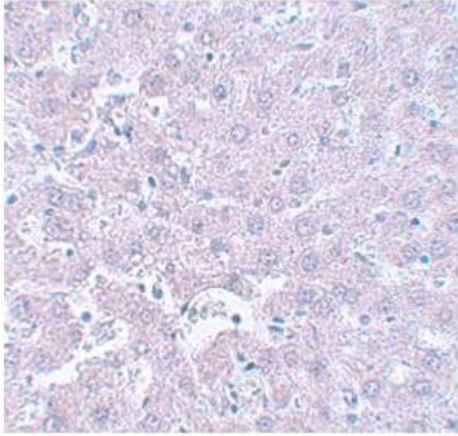
Lane 1 : Anti-CALHM1 antibody (ab106561) at 1 µg/ml

Lane 2 : Anti-CALHM1 antibody (ab106561) at 2 µg/ml

All lanes : Rat liver tissue lysate

Lysates/proteins at 15 µg per lane.

Predicted band size: 38 kDa



Immunohistochemical analysis of CALHM1 in paraffin embedded Rat liver tissue, using ab106561 at 5 µg/ml.

Immunohistochemistry (Formalin/PFA-fixed paraffin-embedded sections) - Anti-CALHM1 antibody (ab106561)

Immunocytochemistry/ Immunofluorescence - Anti-CALHM1 antibody (ab106561)

Immunofluorescence of CALHM1 in Rat Liver cells using ab106561 at 20 µg/ml.

Please note: All products are "FOR RESEARCH USE ONLY. NOT FOR USE IN DIAGNOSTIC PROCEDURES"

Our Abpromise to you: Quality guaranteed and expert technical support

- Replacement or refund for products not performing as stated on the datasheet
- Valid for 12 months from date of delivery
- Response to your inquiry within 24 hours
- We provide support in Chinese, English, French, German, Japanese and Spanish
- Extensive multi-media technical resources to help you
- We investigate all quality concerns to ensure our products perform to the highest standards

If the product does not perform as described on this datasheet, we will offer a refund or replacement. For full details of the Abpromise, please visit <https://www.abcam.co.jp/abpromise> or contact our technical team.

Terms and conditions

- Guarantee only valid for products bought direct from Abcam or one of our authorized distributors