



### Anti-Calceineurin inhibitor antibody ab3349

★★★★★ [2 Abreviews](#) [9 References](#) [画像数 2](#)

#### 製品の概要

製品名	Anti-Calceineurin inhibitor antibody
製品の詳細	Rabbit polyclonal to Calcineurin inhibitor
由来種	Rabbit
アプリケーション	<b>適用あり:</b> ICC/IF
種交差性	<b>交差種:</b> Rat
免疫原	Synthetic peptide (His-tag) corresponding to Rat Calcineurin inhibitor aa 1850 to the C-terminus. Database link: <a href="#">O88480</a>
	 <a href="#">Run BLAST with</a>  <a href="#">Run BLAST with</a>
ポジティブ・コントロール	ICC/IF: PC12 and NRK cells
特記事項	<p>The Life Science industry has been in the grips of a reproducibility crisis for a number of years. Abcam is leading the way in addressing this with our range of recombinant monoclonal antibodies and knockout edited cell lines for gold-standard validation. Please check that this product meets your needs before purchasing.</p> <p>If you have any questions, special requirements or concerns, please send us an inquiry and/or contact our Support team ahead of purchase. Recommended alternatives for this product can be found below, along with publications, customer reviews and Q&amp;As</p>

#### 製品の特性

製品の状態	Liquid
保存方法	Shipped at 4°C. Store at +4°C short term (1-2 weeks). Upon delivery aliquot. Store at -20°C or -80°C. Avoid freeze / thaw cycle.
バッファー	Constituent: 99% PBS
精製度	Whole antiserum
一次抗体 備考	Calcineurin is a widely distributed Ser/Thr, calcium and calmodulin-dependent protein phosphatase. It mediates the immunosuppressive actions of drugs such as FK506 and cyclosporin, and has also been implicated in a number of calcium-sensitive pathways in the nervous system. Calcineurin has been found to be associated with other proteins, such as calmodulin, FKBP12, the ryanodine receptor, inositol 1,4,5-trisphosphate, and a recently identified protein, calcineurin inhibitor (CAIN). CAIN has been shown to bind calcineurin through its C-terminal tail. Recent studies have shown CAIN to bind to both amphiphysin 1 and calcineurin

simultaneously and therefore acts as a physiological inhibitor of calcineurin. The binding of CAIN to amphiphysin 1 does not affect the interaction of amphiphysin 1 with other endocytic proteins. CAIN, like calcineurin, is highly expressed in neurons and other tissues.

ポリモノ

ポリクローナル

アイソタイプ

IgG

## アプリケーション

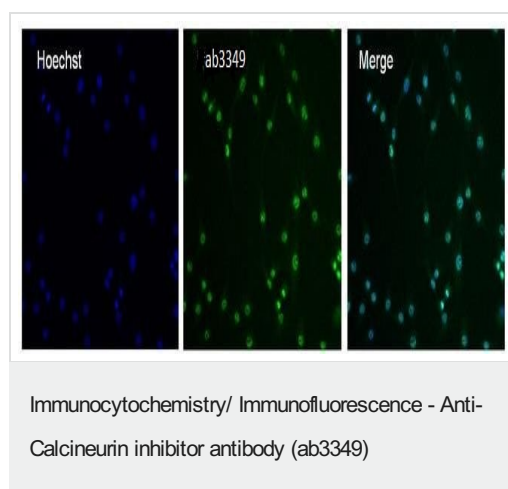
**The Abpromise guarantee** Abpromise保証は、次のテスト済みアプリケーションにおけるab3349の使用に適用されます  
アプリケーションノートには、推奨の開始希釈率がありますが、適切な希釈率につきましてはご確認ください。

アプリケーション	Abreviews	特記事項
ICC/IF		1/1000.

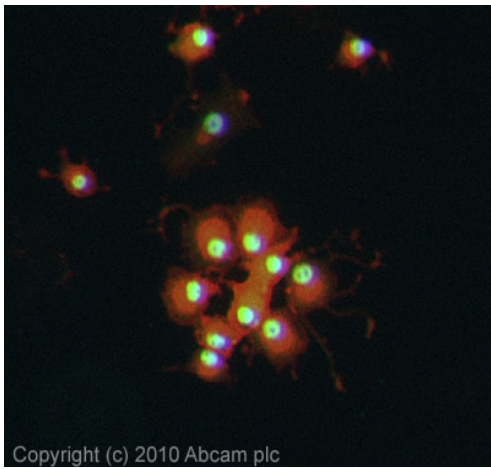
## ターゲット情報

機能	May be required for replication-independent chromatin assembly. May serve as a negative regulator of T-cell receptor (TCR) signaling via inhibition of calcineurin. Inhibition of activated calcineurin is dependent on both PKC and calcium signals.
組織特異性	Widely expressed in different tissues.
配列類似性	Contains 6 TPR repeats.
翻訳後修飾	Activated through PKC-mediated hyperphosphorylation.
細胞内局在	Nucleus.

## 画像



Immunocytochemistry/ Immunofluorescence analysis of NRK cells labeling Calcineurin inhibitor with ab3349. The cells were fixed with 4% paraformaldehyde for 15 minutes, permeabilized with 0.1% Triton X-100 in PBS for 15 minutes, and blocked with 3% BSA in PBS for 30 minutes at room temperature. Cells were stained with ab3349 at a dilution of 20 µg/mL in staining buffer for 1 hour at room temperature, and then incubated with a Goat anti-Rabbit IgG (H+L) Superclonal Secondary Antibody, Alexa Fluor 488 conjugate at a dilution of 1/1000 for 1 hour at room temperature (green). Nuclei (blue) were stained with Hoechst 33342 dye.



Copyright (c) 2010 Abcam plc

Immunocytochemistry/ Immunofluorescence - Anti-Calcineurin inhibitor antibody (ab3349)

ICC/IF image of ab3349 stained PC12 cells. The cells were 4% formaldehyde fixed (10 min) and then incubated in 1%BSA / 10% normal goat serum / 0.3M glycine in 0.1% PBS-Tween for 1h to permeabilise the cells and block non-specific protein-protein interactions. The cells were then incubated with the antibody (ab3349, 1µg/ml) overnight at +4°C. The secondary antibody (green) was Alexa Fluor® 488 goat anti-rabbit IgG (H+L) used at a 1/1000 dilution for 1h. Alexa Fluor® 594 WGA was used to label plasma membranes (red) at a 1/200 dilution for 1h. DAPI was used to stain the cell nuclei (blue) at a concentration of 1.43µM.

**Please note:** All products are "FOR RESEARCH USE ONLY. NOT FOR USE IN DIAGNOSTIC PROCEDURES"

### Our Abpromise to you: Quality guaranteed and expert technical support

- Replacement or refund for products not performing as stated on the datasheet
- Valid for 12 months from date of delivery
- Response to your inquiry within 24 hours
- We provide support in Chinese, English, French, German, Japanese and Spanish
- Extensive multi-media technical resources to help you
- We investigate all quality concerns to ensure our products perform to the highest standards

If the product does not perform as described on this datasheet, we will offer a refund or replacement. For full details of the Abpromise, please visit <https://www.abcam.co.jp/abpromise> or contact our technical team.

### Terms and conditions

- Guarantee only valid for products bought direct from Abcam or one of our authorized distributors