


Anti-Calceineurin A antibody [EP1669Y] ab52761

KO 評価済 RabMAb

★★★★☆ **3 Abreviews** **8 References** **画像数 4**

製品の概要

製品名	Anti-Calceineurin A antibody [EP1669Y]
製品の詳細	Rabbit monoclonal [EP1669Y] to Calceineurin A
由来種	Rabbit
アプリケーション	適用あり: Flow Cyt (Intra), WB 適用なし: ICC/IF or IHC-P
種交差性	交差種: Human 交差が予測される動物種: Mouse, Rat, Hamster 
免疫原	Synthetic peptide. This information is proprietary to Abcam and/or its suppliers.
ポジティブ・コントロール	WB: HeLa, SH-SY5Y and HAP1 cell lysates. Flow Cyt (intra): HeLa cells.
特記事項	Our RabMAb [®] technology is a patented hybridoma-based technology for making rabbit monoclonal antibodies. For details on our patents, please refer to RabMAb[®] patents . The Life Science industry has been in the grips of a reproducibility crisis for a number of years. Abcam is leading the way in addressing this with our range of recombinant monoclonal antibodies and knockout edited cell lines for gold-standard validation. Please check that this product meets your needs before purchasing. If you have any questions, special requirements or concerns, please send us an inquiry and/or contact our Support team ahead of purchase. Recommended alternatives for this product can be found below, along with publications, customer reviews and Q&As

製品の特性

製品の状態	Liquid
保存方法	Shipped at 4°C. Upon delivery aliquot and store at -20°C. Avoid freeze / thaw cycles.
バッファー	pH: 7.20 Preservative: 0.05% Sodium azide Constituents: 0.1% BSA, 40% Glycerol (glycerin, glycerine), 9.85% Tris glycine, 50% Tissue culture supernatant
精製度	Protein A purified
ポリ/モノ	モノクローナル

クローン名 EP1669Y
アイソタイプ IgG

アプリケーション

The Abpromise guarantee **Abpromise保証は、次のテスト済みアプリケーションにおけるab52761の使用に適用されず**
アプリケーションノートには、推奨の開始希釈率がありますが、適切な希釈率につきましてはご確認ください。

アプリケーション	Abreviews	特記事項
Flow Cyt (Intra)		1/100. ab172730 - Rabbit monoclonal IgG, is suitable for use as an isotype control with this antibody.
WB	★★★★★ (3)	1/10000. Detects a band of approximately 59 kDa (predicted molecular weight: 59 kDa).

追加情報 Is unsuitable for ICC/IF or IHC-P.

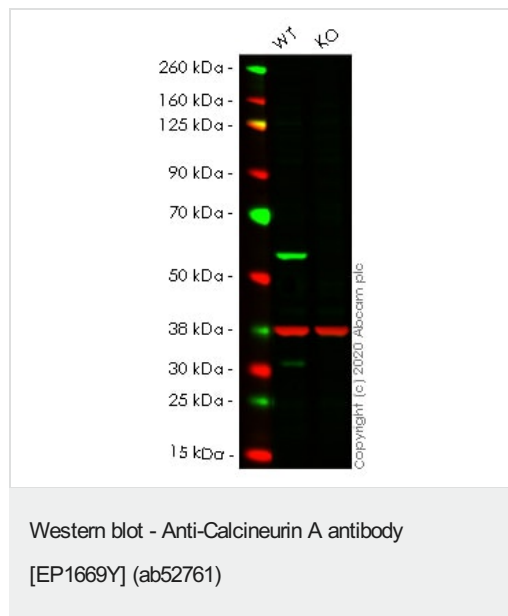
ターゲット情報

機能 Calcium-dependent, calmodulin-stimulated protein phosphatase. This subunit may have a role in the calmodulin activation of calcineurin. Dephosphorylates DNMT1, HSPB1 and SSH1.

配列類似性 Belongs to the PPP phosphatase family. PP-2B subfamily.

細胞内局在 Nucleus. Colocalizes with ACTN1 and MYOZ2 at the Z line in heart and skeletal muscle.

画像



All lanes : Anti-Calcineurin A antibody [EP1669Y] (ab52761) at 1/1000 dilution

Lane 1 : Wild-type HeLa cell lysate

Lane 2 : PPP3CA knockout HeLa cell lysate

Lysates/proteins at 20 µg per lane.

Performed under reducing conditions.

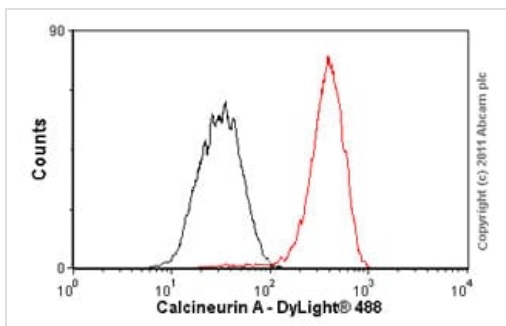
Predicted band size: 59 kDa

Observed band size: 59 kDa

Lanes 1-2: Merged signal (red and green). Green - ab52761 observed at 59 kDa. Red - Anti-GAPDH antibody [6C5] - Loading

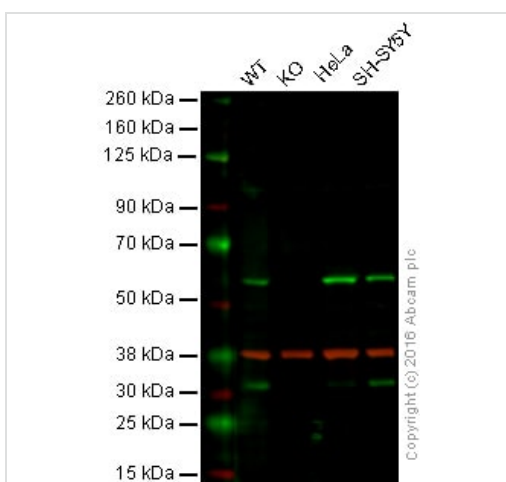
Control (**ab8245**) observed at 37 kDa.

ab52761 was shown to react with Calcineurin A in wild-type HeLa cells in western blot. Loss of signal was observed when knockout cell line **ab265130** (knockout cell lysate **ab257181**) was used. Wild-type HeLa and PPP3CA knockout HeLa cell lysates were subjected to SDS-PAGE. Membrane was blocked for 1 hour at room temperature in 0.1% TBST with 3% non-fat dried milk. ab52761 and Anti-GAPDH antibody [6C5] - Loading Control (**ab8245**) overnight at 4°C at a 1 in 1000 dilution and a 1 in 20000 dilution respectively. Blots were developed with Goat anti-Rabbit IgG H&L (IRDye®800CW) preadsorbed (**ab216773**) and Goat anti-Mouse IgG H&L (IRDye®680RD) preadsorbed (**ab216776**) secondary antibodies at 1 in 20000 dilution for 1 hour at room temperature before imaging.



Flow Cytometry (Intracellular) - Anti-Calcineurin A antibody [EP1669Y] (ab52761)

Overlay histogram showing HeLa cells stained with ab52761 (red line). The cells were fixed with 80% methanol (5 min) and then permeabilized with 0.1% PBS-Tween for 20 min. The cells were then incubated in 1x PBS / 10% normal goat serum / 0.3M glycine to block non-specific protein-protein interactions followed by the antibody (ab52761, 1/100 dilution) for 30 min at 22°C. The secondary antibody used was DyLight® 488 goat anti-rabbit IgG (H+L) (**ab96899**) at 1/500 dilution for 30 min at 22°C. Isotype control antibody (black line) was rabbit IgG (monoclonal) (1µg/1x10⁶ cells) used under the same conditions. Acquisition of >5,000 events was performed.



Western blot - Anti-Calcineurin A antibody [EP1669Y] (ab52761)

Lane 1: Wild-type HAP1 cell lysate (20 µg)

Lane 2: Calcineurin A knockout HAP1 cell lysate (20 µg)

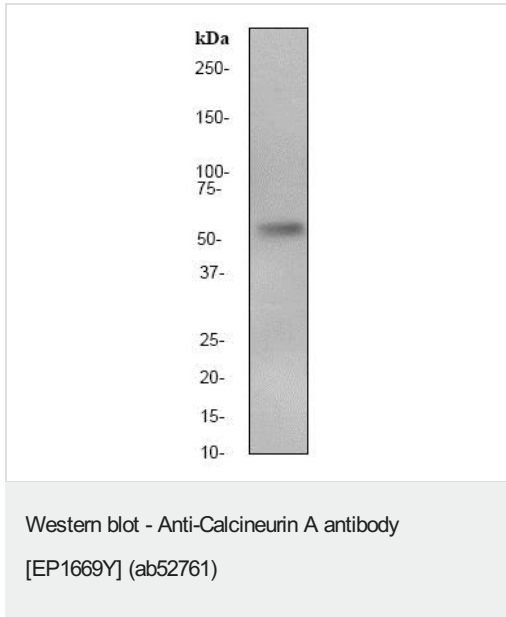
Lane 3: HeLa cell lysate (20 µg)

Lane 4: SH-SY5Y cell lysate (20 µg)

Lanes 1 - 4: Merged signal (red and green). Green - ab52761 observed at 60 kDa. Red - loading control, **ab8245**, observed at 37 kDa.

ab52761 was shown to specifically react with Calcineurin A when Calcineurin A knockout samples were used. Wild-type and Calcineurin A knockout samples were subjected to SDS-PAGE. ab52761 and **ab8245** (loading control to GAPDH) were both diluted 1/10000 and incubated overnight at 4°C. Blots were developed with Goat anti-Rabbit IgG H&L (IRDye® 800CW)

preadsorbed (**ab216773**) and Goat anti-Mouse IgG H&L (IRDye® 680RD) preadsorbed (**ab216776**) secondary antibodies at 1/10000 dilution for 1 hour at room temperature before imaging.



Anti-Calcineurin A antibody [EP1669Y] (ab52761) at 1/10000 dilution + HeLa cell lysate at 10 µg

Secondary

Goat anti-rabbit HRP labeled at 1/2000 dilution

Predicted band size: 59 kDa

Observed band size: 59 kDa

Please note: All products are "FOR RESEARCH USE ONLY. NOT FOR USE IN DIAGNOSTIC PROCEDURES"

Our Abpromise to you: Quality guaranteed and expert technical support

- Replacement or refund for products not performing as stated on the datasheet
- Valid for 12 months from date of delivery
- Response to your inquiry within 24 hours
- We provide support in Chinese, English, French, German, Japanese and Spanish
- Extensive multi-media technical resources to help you
- We investigate all quality concerns to ensure our products perform to the highest standards

If the product does not perform as described on this datasheet, we will offer a refund or replacement. For full details of the Abpromise, please visit <https://www.abcam.co.jp/abpromise> or contact our technical team.

Terms and conditions

- Guarantee only valid for products bought direct from Abcam or one of our authorized distributors