

# Anti-Calceineurin A antibody ab3673

★★★★☆ [5 Abreviews](#) [21 References](#) [画像数 4](#)

### 製品の概要

製品名	Anti-Calceineurin A antibody
製品の詳細	Rabbit polyclonal to Calceineurin A
由来種	Rabbit
アプリケーション	<b>適用あり:</b> WB
種交差性	<b>交差種:</b> Mouse, Rat, Human, Recombinant fragment
免疫原	Recombinant full length protein corresponding to Human Calceineurin A.
特記事項	<p>The Life Science industry has been in the grips of a reproducibility crisis for a number of years. Abcam is leading the way in addressing this with our range of recombinant monoclonal antibodies and knockout edited cell lines for gold-standard validation. Please check that this product meets your needs before purchasing.</p> <p>If you have any questions, special requirements or concerns, please send us an inquiry and/or contact our Support team ahead of purchase. Recommended alternatives for this product can be found below, along with publications, customer reviews and Q&amp;As</p>

### 製品の特性

製品の状態	Liquid
保存方法	Shipped at 4°C. Store at +4°C short term (1-2 weeks). Upon delivery aliquot. Store at -20°C or -80°C. Avoid freeze / thaw cycle.
バッファー	Preservative: 0.01% Sodium azide
精製度	Whole antiserum
ポリ/モノ	ポリクローナル
アイソタイプ	IgG

### アプリケーション

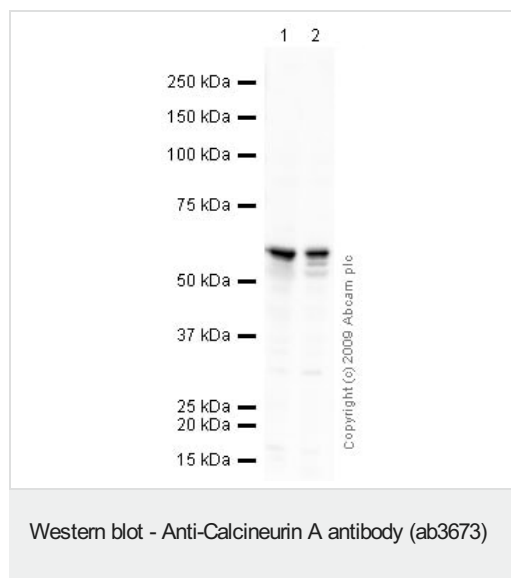
**The Abpromise guarantee**      **Abpromise保証は、** 次のテスト済みアプリケーションにおけるab3673の使用に適用されます  
アプリケーションノートには、推奨の開始希釈率がありますが、適切な希釈率につきましてはご検討ください。

アプリケーション	Abreviews	特記事項
WB	★★★★★ (3)	1/2000 - 1/5000. Detects a band of approximately 62 kDa.

## ターゲット情報

機能	Calcium-dependent, calmodulin-stimulated protein phosphatase. This subunit may have a role in the calmodulin activation of calcineurin. Dephosphorylates DNM1L, HSPB1 and SSH1.
配列類似性	Belongs to the PPP phosphatase family. PP-2B subfamily.
細胞内局在	Nucleus. Colocalizes with ACTN1 and MYOZ2 at the Z line in heart and skeletal muscle.

## 画像



**All lanes** : Anti-Calcineurin A antibody (ab3673) at 1/200 dilution

**Lane 1** : Mouse brain tissue lysate

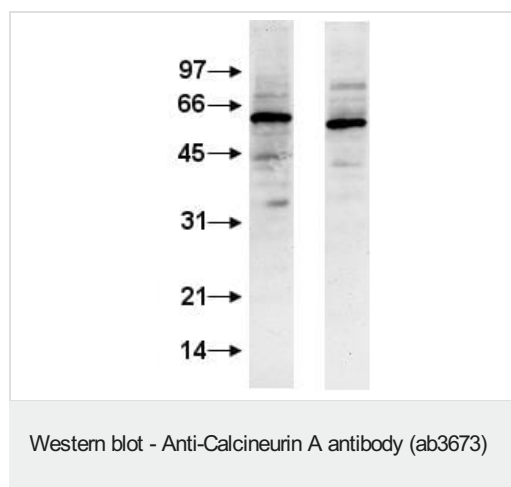
**Lane 2** : Rat brain tissue lysate

Lysates/proteins at 10 µg per lane.

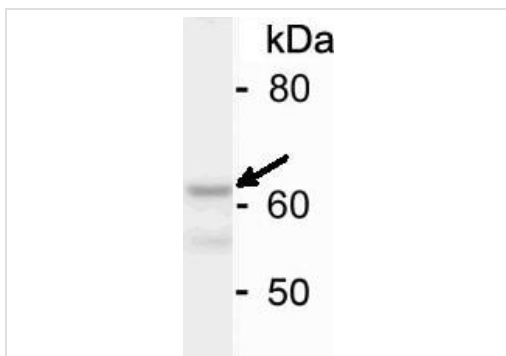
### Secondary

**All lanes** : Goat polyclonal to Rabbit IgG - H&L - Pre-Adsorbed (HRP) at 1/3000 dilution

**Observed band size:** 62 kDa



Western Blot of wild type mouse brain tissue homogenate with ab3673 used at 1/6000. Please note that this image was assembled from two different blots. (The numbers on the scale correspond to kD).



Western blot - Anti-Calceurin A antibody (ab3673)

This image is a courtesy of Anonymous Abreview

Anti-Calceurin A antibody (ab3673) at 1/1000 dilution + Huh7  
(Human hepatocellular carcinoma) whole cell lysate at 15000 cells

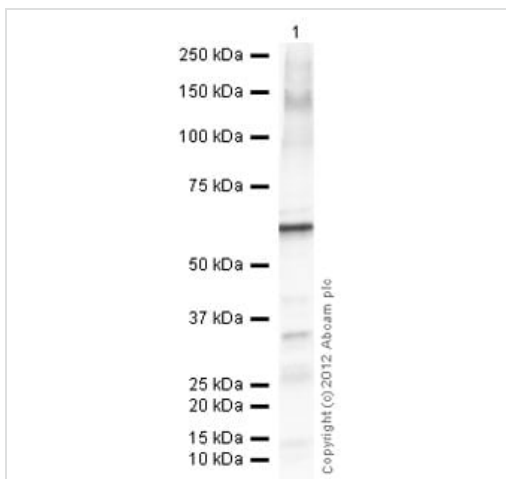
#### Secondary

HRP conjugated sheep polyclonal to rabbit IgG at 1/15000 dilution

Performed under reducing conditions.

**Observed band size:** 62 kDa

**Exposure time:** 1 minute



Western blot - Anti-Calceurin A antibody (ab3673)

Anti-Calceurin A antibody (ab3673) at 1/1000 dilution +  
Recombinant Human Calceurin A protein ([ab101870](#)) at 0.1 µg

#### Secondary

Goat Anti-Rabbit IgG H&L (HRP) preadsorbed ([ab97080](#)) at  
1/5000 dilution

Developed using the ECL technique.

Performed under reducing conditions.

**Exposure time:** 10 seconds

**Please note:** All products are "FOR RESEARCH USE ONLY. NOT FOR USE IN DIAGNOSTIC PROCEDURES"

#### Our Abpromise to you: Quality guaranteed and expert technical support

- Replacement or refund for products not performing as stated on the datasheet
- Valid for 12 months from date of delivery
- Response to your inquiry within 24 hours
- We provide support in Chinese, English, French, German, Japanese and Spanish
- Extensive multi-media technical resources to help you
- We investigate all quality concerns to ensure our products perform to the highest standards

If the product does not perform as described on this datasheet, we will offer a refund or replacement. For full details of the Abpromise, please visit <https://www.abcam.co.jp/abpromise> or contact our technical team.

## Terms and conditions

---

- Guarantee only valid for products bought direct from Abcam or one of our authorized distributors