


# Anti-CAB39/MO25 antibody [EP1680Y] ab51132

リコンビナント **RabMAb**

**6 References**   **画像数 5**

### 製品の概要

製品名	Anti-CAB39/MO25 antibody [EP1680Y]
製品の詳細	Rabbit monoclonal [EP1680Y] to CAB39/MO25
由来種	Rabbit
アプリケーション	<b>適用あり:</b> WB, IHC-P, ICC/IF, Flow Cyt (Intra)
種交差性	<b>交差種:</b> Human <b>交差が予測される動物種:</b> Mouse, Rat 
免疫原	Synthetic peptide within Human CAB39/MO25 (C terminal). The exact sequence is proprietary.
ポジティブ・コントロール	HeLa cell lysate, human brain tissue, or HeLa cells.
特記事項	This product is a recombinant monoclonal antibody, which offers several advantages including: <ul style="list-style-type: none"> <li>- High batch-to-batch consistency and reproducibility</li> <li>- Improved sensitivity and specificity</li> <li>- Long-term security of supply</li> <li>- Animal-free production</li> </ul> For more information <a href="#">see here</a> . Our RabMAb <sup>®</sup> technology is a patented hybridoma-based technology for making rabbit monoclonal antibodies. For details on our patents, please refer to <a href="#">RabMAb<sup>®</sup> patents</a> .

### 製品の特性

製品の状態	Liquid
保存方法	Shipped at 4°C. Upon delivery aliquot and store at -20°C. Avoid freeze / thaw cycles.
バッファー	pH: 7.20 Preservative: 0.05% Sodium azide Constituents: 0.1% BSA, 40% Glycerol (glycerin, glycerine), 9.85% Tris glycine, 50% Tissue culture supernatant
精製度	Tissue culture supernatant
ポリ/モノ	モノクローナル
クローン名	EP1680Y
アイソタイプ	IgG

## アプリケーション

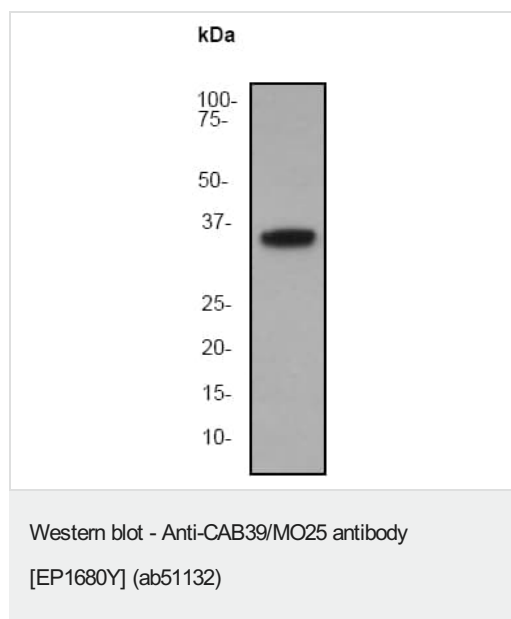
**The Abpromise guarantee**      Abpromise保証は、次のテスト済みアプリケーションにおけるab51132の使用に適用されます  
アプリケーションノートには、推奨の開始希釈率がありますが、適切な希釈率につきましてはご検討ください。

アプリケーション	Abreviews	特記事項
WB		1/20000. Detects a band of approximately 35 kDa (predicted molecular weight: 40 kDa).
IHC-P		Use at an assay dependent concentration. Perform heat mediated antigen retrieval with citrate buffer pH 6 before commencing with IHC staining protocol. We strongly recommend that customers perform an antigen retrieval step.
ICC/IF		1/100 - 1/250.
Flow Cyt (Intra)		1/1000 - 1/10000. <b>ab172730</b> - Rabbit monoclonal IgG, is suitable for use as an isotype control with this antibody.

## ターゲット情報

機能	Together with the STE20-related adaptor-alpha (STRAD alpha) pseudo kinase, forms a regulatory complex capable of stimulating the activity of STK11.
配列類似性	Belongs to the Mo25 family.
細胞内局在	Cytoplasm.

## 画像



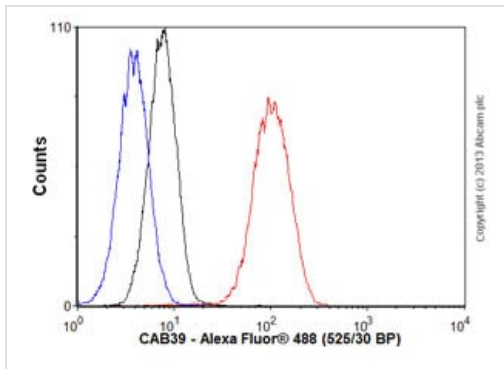
Anti-CAB39/MO25 antibody [EP1680Y] (ab51132) at 1/20000 dilution + HeLa cell lysate at 10 µg

### Secondary

Goat anti-rabbit HRP labeled at 1/2000 dilution

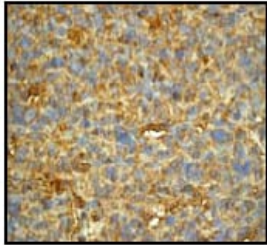
**Predicted band size:** 40 kDa

**Observed band size:** 35 kDa



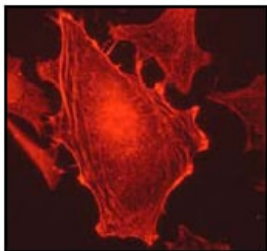
Flow Cytometry (Intracellular) - Anti-CAB39/MO25 antibody [EP1680Y] (ab51132)

Overlay histogram showing HeLa cells stained with ab51132 (red line). The cells were fixed with 80% methanol (5 min) and then permeabilized with 0.1% PBS-Tween for 20 min. The cells were then incubated in 1x PBS / 10% normal goat serum / 0.3M glycine to block non-specific protein-protein interactions followed by the antibody (ab51132, 1/1000 dilution) for 30 min at 22°C. The secondary antibody used was Alexa Fluor® 488 goat anti-rabbit IgG (H&L) (**ab150077**) at 1/2000 dilution for 30 min at 22°C. Isotype control antibody (black line) was rabbit IgG (monoclonal) (0.1µg/1x10<sup>6</sup> cells) used under the same conditions. Unlabelled sample (blue line) was also used as a control. Acquisition of >5,000 events were collected using a 20mW Argon ion laser (488nm) and 525/30 bandpass filter.



Immunohistochemistry (Formalin/PFA-fixed paraffin-embedded sections) - Anti-CAB39/MO25 antibody [EP1680Y] (ab51132)

Ab51132 (1:100) staining human CAB39/MO25 in human brain tissue by immunohistochemistry using paraffin embedded tissue. Perform heat mediated antigen retrieval with citrate buffer pH 6 before commencing with IHC staining protocol.



Immunocytochemistry/ Immunofluorescence - Anti-CAB39/MO25 antibody [EP1680Y] (ab51132)

Immunofluorescent staining of HeLa cells using ab51132 (1:100).

### Why choose a recombinant antibody?



**Research with confidence**  
Consistent and reproducible results



**Long-term and scalable supply**  
Recombinant technology



**Success from the first experiment**  
Confirmed specificity



**Ethical standards compliant**  
Animal-free production

Anti-CAB39/MO25 antibody [EP1680Y] (ab51132)

**Please note:** All products are "FOR RESEARCH USE ONLY. NOT FOR USE IN DIAGNOSTIC PROCEDURES"

### Our Abpromise to you: Quality guaranteed and expert technical support

---

- Replacement or refund for products not performing as stated on the datasheet
- Valid for 12 months from date of delivery
- Response to your inquiry within 24 hours
- We provide support in Chinese, English, French, German, Japanese and Spanish
- Extensive multi-media technical resources to help you
- We investigate all quality concerns to ensure our products perform to the highest standards

If the product does not perform as described on this datasheet, we will offer a refund or replacement. For full details of the Abpromise, please visit <https://www.abcam.co.jp/abpromise> or contact our technical team.

### Terms and conditions

---

- Guarantee only valid for products bought direct from Abcam or one of our authorized distributors