

### Anti-C9 antibody ab67040

画像数 1

#### 製品の概要

---

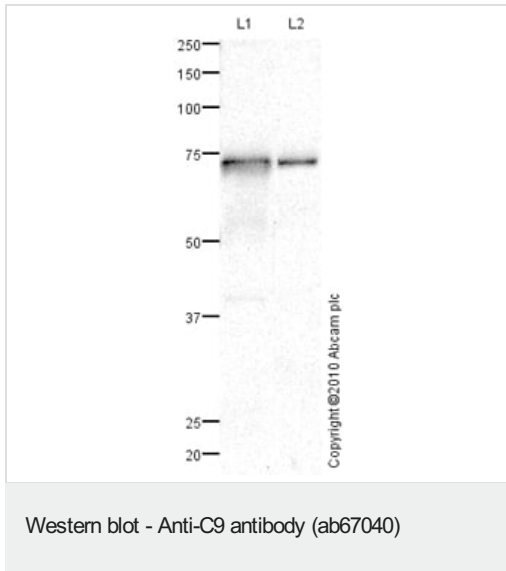
製品名	Anti-C9 antibody
製品の詳細	Rabbit polyclonal to C9
由来種	Rabbit
アプリケーション	<b>適用あり:</b> WB
種交差性	<b>交差種:</b> Human
免疫原	Synthetic peptide corresponding to Human C9 aa 500 to the C-terminus (C terminal) conjugated to keyhole limpet haemocyanin. (Peptide available as <a href="#">ab94838</a> )
ポジティブ・コントロール	Recombinant Human C9 protein ( <a href="#">ab114199</a> ) can be used as a positive control in WB. This antibody gave a positive signal in the following tissue lysates: Human placenta; Human plasma total protein
特記事項	<p>The Life Science industry has been in the grips of a reproducibility crisis for a number of years. Abcam is leading the way in addressing this with our range of recombinant monoclonal antibodies and knockout edited cell lines for gold-standard validation. Please check that this product meets your needs before purchasing.</p> <p>If you have any questions, special requirements or concerns, please send us an inquiry and/or contact our Support team ahead of purchase. Recommended alternatives for this product can be found below, along with publications, customer reviews and Q&amp;As</p>

#### 製品の特性

---

製品の状態	Liquid
保存方法	Shipped at 4°C. Store at +4°C short term (1-2 weeks). Upon delivery aliquot. Store at -20°C or -80°C. Avoid freeze / thaw cycle.
バッファー	pH: 7.40 Preservative: 0.02% Sodium azide Constituent: PBS
精製度	Immunogen affinity purified
	Batches of this product that have a concentration < 1mg/ml may have BSA added as a stabilising agent. If you would like information about the formulation of a specific lot, please contact our scientific support team who will be happy to help.





**All lanes :** Anti-C9 antibody (ab67040) at 1 µg/ml

**Lane 1 :** Human Plasma Total Protein Lysate

**Lane 2 :** Human placenta tissue lysate - total protein ([ab29745](#))

Lysates/proteins at 10 µg per lane.

### Secondary

**All lanes :** Goat polyclonal to Rabbit IgG - H&L - Pre-Adsorbed (HRP) at 1/3000 dilution

Developed using the ECL technique.

Performed under reducing conditions.

**Predicted band size:** 63 kDa

**Observed band size:** 74 kDa

**Additional bands at:** 40 kDa. We are unsure as to the identity of these extra bands.

**Exposure time:** 16 minutes

Human Complement component C9 precursor contains a number of potential glycosylation sites (SwissProt) which may explain its migration at a higher molecular weight than predicted. The 74 kDa band observed is also comparable to the molecular weight seen with other commercially available antibodies to C9.

**Please note:** All products are "FOR RESEARCH USE ONLY. NOT FOR USE IN DIAGNOSTIC PROCEDURES"

### Our Abpromise to you: Quality guaranteed and expert technical support

- Replacement or refund for products not performing as stated on the datasheet

- Valid for 12 months from date of delivery
- Response to your inquiry within 24 hours
  
- We provide support in Chinese, English, French, German, Japanese and Spanish
- Extensive multi-media technical resources to help you
- We investigate all quality concerns to ensure our products perform to the highest standards

If the product does not perform as described on this datasheet, we will offer a refund or replacement. For full details of the Abpromise, please visit <https://www.abcam.co.jp/abpromise> or contact our technical team.

### **Terms and conditions**

---

- Guarantee only valid for products bought direct from Abcam or one of our authorized distributors