


### Anti-C6 antibody ab74638

画像数 2

#### 製品の概要

---

製品名	Anti-C6 antibody
製品の詳細	Rabbit polyclonal to C6
由来種	Rabbit
特異性	From Jan 2024, QC testing of replenishment batches of this polyclonal changed. All tested and expected application and reactive species combinations are still covered by our Abcam product promise. However, we no longer test all applications. For more information on a specific batch, please contact our Scientific Support who will be happy to help.
アプリケーション	適用あり: WB, ICC/IF
種交差性	交差種: Human 交差が予測される動物種: Mouse, Cow, Pig 
免疫原	Synthetic peptide corresponding to Human C6 aa 200-300 (internal sequence) conjugated to keyhole limpet haemocyanin. (Peptide available as <a href="#">ab74637</a> )
ポジティブ・コントロール	This antibody gave a positive signal in Human Plasma (Total Protein)
特記事項	<p>The Life Science industry has been in the grips of a reproducibility crisis for a number of years. Abcam is leading the way in addressing this with our range of recombinant monoclonal antibodies and knockout edited cell lines for gold-standard validation. Please check that this product meets your needs before purchasing.</p> <p>If you have any questions, special requirements or concerns, please send us an inquiry and/or contact our Support team ahead of purchase. Recommended alternatives for this product can be found below, along with publications, customer reviews and Q&amp;As</p>

#### 製品の特性

---

製品の状態	Liquid
保存方法	Shipped at 4°C. Store at +4°C short term (1-2 weeks). Upon delivery aliquot. Store at -20°C or -80°C. Avoid freeze / thaw cycle.
バッファー	pH: 7.40 Preservative: 0.02% Sodium azide Constituent: PBS

Batches of this product that have a concentration < 1mg/ml may have BSA added as a stabilising agent. If you would like information about the formulation of a specific lot, please contact our scientific support team who will be happy to help.

精製度	Immunogen affinity purified
ポリ/モノ	ポリクローナル
アイソタイプ	IgG

## アプリケーション

**The Abpromise guarantee**      **Abpromise保証は、次のテスト済みアプリケーションにおけるab74638の使用に適用されます**  
アプリケーションノートには、推奨の開始希釈率がありますが、適切な希釈率につきましてはご検討ください。

アプリケーション	Abreviews	特記事項
WB		Use a concentration of 1 µg/ml. Detects a band of approximately 110 kDa (predicted molecular weight: 105 kDa).
ICC/IF		Use a concentration of 5 µg/ml.

## ターゲット情報

機能	Constituent of the membrane attack complex (MAC) that plays a key role in the innate and adaptive immune response by forming pores in the plasma membrane of target cells.
関連疾患	Defects in C6 are the cause of complement component 6 deficiency (C6D) [MIM:612446]. A rare defect of the complement classical pathway associated with susceptibility to severe recurrent infections, predominantly by <i>Neisseria gonorrhoeae</i> or <i>Neisseria meningitidis</i> .
配列類似性	Belongs to the complement C6/C7/C8/C9 family. Contains 1 EGF-like domain. Contains 2 Kazal-like domains. Contains 1 LDL-receptor class A domain. Contains 1 MACPF domain. Contains 2 Sushi (CCP/SCR) domains. Contains 3 TSP type-1 domains.
翻訳後修飾	All cysteine residues are assumed to be cross-linked to one another. Individual modules containing an even number of conserved cysteine residues are supposed to have disulfide linkages only within the same module.
細胞内局在	Secreted.

## 画像



Western blot - Anti-C6 antibody (ab74638)

**All lanes :** Anti-C6 antibody (ab74638) at 1 µg/ml

**Lane 1 :** Human Plasma Total Protein Lysate at 2 µg

**Lane 2 :** Human Plasma Total Protein Lysate at 5 µg

**Lane 3 :** Human Plasma Total Protein Lysate at 10 µg

### Secondary

**All lanes :** Goat polyclonal to Rabbit IgG - H&L - Pre-Adsorbed (HRP) at 1/3000 dilution

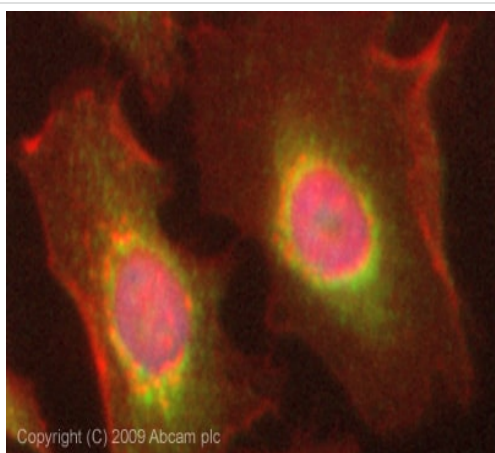
Performed under reducing conditions.

**Predicted band size:** 105 kDa

**Observed band size:** 110 kDa

**Exposure time:** 2 minutes

C6 contains a number of potential glycosylation sites (SwissProt) which may explain its migration at a higher molecular weight than predicted.



Immunocytochemistry/ Immunofluorescence - Anti-C6 antibody (ab74638)

ICC/IF image of ab74638 stained HeLa cells. The cells were 4% PFA fixed (10 min) and then incubated in 1%BSA / 10% normal goat serum / 0.3M glycine in 0.1% PBS-Tween for 1h to permeabilise the cells and block non-specific protein-protein interactions. The cells were then incubated with the antibody (ab74638, 5µg/ml) overnight at +4°C. The secondary antibody (green) was Alexa Fluor® 488 goat anti- rabbit IgG (H+L) used at a 1/1000 dilution for 1h. Alexa Fluor® 594 WGA was used to label plasma membranes (red) at a 1/200 dilution for 1h. DAPI was used to stain the cell nuclei (blue) at a concentration of 1.43µM. This antibody also gave a positive result in 100% methanol fixed (5 min) HeLa cells at 5µg/ml.

**Please note:** All products are "FOR RESEARCH USE ONLY. NOT FOR USE IN DIAGNOSTIC PROCEDURES"

## **Our Abpromise to you: Quality guaranteed and expert technical support**

---

- Replacement or refund for products not performing as stated on the datasheet
- Valid for 12 months from date of delivery
- Response to your inquiry within 24 hours
  
- We provide support in Chinese, English, French, German, Japanese and Spanish
- Extensive multi-media technical resources to help you
- We investigate all quality concerns to ensure our products perform to the highest standards

If the product does not perform as described on this datasheet, we will offer a refund or replacement. For full details of the Abpromise, please visit <https://www.abcam.co.jp/abpromise> or contact our technical team.

## **Terms and conditions**

---

- Guarantee only valid for products bought direct from Abcam or one of our authorized distributors