

Anti-C4a antibody ab66790

★★★★★ [2 Abreviews](#) [4 References](#) [画像数 2](#)

製品の概要

製品名	Anti-C4a antibody
製品の詳細	Rabbit polyclonal to C4a
由来種	Rabbit
アプリケーション	適用あり: WB
種交差性	交差種: Human
免疫原	Synthetic peptide corresponding to Human C4a aa 700-800 conjugated to keyhole limpet haemocyanin. (Peptide available as ab86260)
特記事項	<p>The Life Science industry has been in the grips of a reproducibility crisis for a number of years. Abcam is leading the way in addressing this with our range of recombinant monoclonal antibodies and knockout edited cell lines for gold-standard validation. Please check that this product meets your needs before purchasing.</p> <p>If you have any questions, special requirements or concerns, please send us an inquiry and/or contact our Support team ahead of purchase. Recommended alternatives for this product can be found below, along with publications, customer reviews and Q&As</p>

製品の特性

製品の状態	Liquid
保存方法	Shipped at 4°C. Store at +4°C short term (1-2 weeks). Upon delivery aliquot. Store at -20°C or -80°C. Avoid freeze / thaw cycle.
バッファー	<p>pH: 7.40</p> <p>Preservative: 0.02% Sodium azide</p> <p>Constituent: PBS</p> <p>Batches of this product that have a concentration < 1mg/ml may have BSA added as a stabilising agent. If you would like information about the formulation of a specific lot, please contact our scientific support team who will be happy to help.</p>
精製度	Immunogen affinity purified
ポリ/モノ	ポリクローナル
アイソタイプ	IgG

アプリケーション

The Abpromise guarantee Abpromise保証は、次のテスト済みアプリケーションにおけるab66790の使用に適用されます

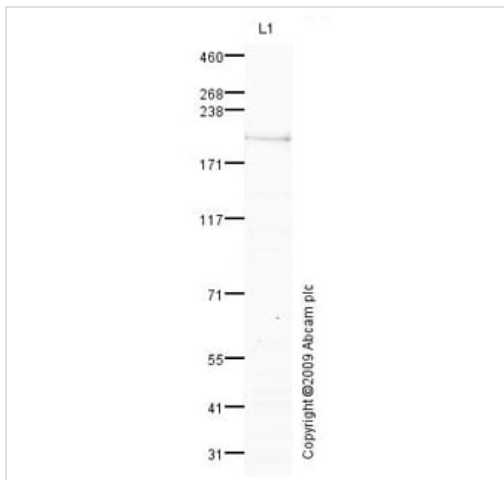
アプリケーションノートには、推奨の開始希釈率がありますが、適切な希釈率につきましてはご検討ください。

アプリケーション	Abreviews	特記事項
WB	★★★★★ (1)	Use a concentration of 1 µg/ml. Detects a band of approximately 193 kDa (predicted molecular weight: 193 kDa).

ターゲット情報

機能	<p>C4 plays a central role in the activation of the classical pathway of the complement system. It is processed by activated C1 which removes from the alpha chain the C4a anaphylatoxin. The remaining alpha chain fragment C4b is the major activation product and is an essential subunit of the C3 convertase (C4b2a) and the C5 convertase (C3bC4b2a) enzymes of the classical complement pathway.</p> <p>Derived from proteolytic degradation of complement C4, C4a anaphylatoxin is a mediator of local inflammatory process. It induces the contraction of smooth muscle, increases vascular permeability and causes histamine release from mast cells and basophilic leukocytes.</p>
関連疾患	<p>Defects in C4A are the cause of complement component 4A deficiency (C4AD) [MIM:120810]. A rare defect of the complement classical pathway associated with the development of autoimmune disorders, mainly systemic lupus with or without associated glomerulonephritis.</p>
配列類似性	<p>Contains 1 anaphylatoxin-like domain.</p> <p>Contains 1 NTR domain.</p>
翻訳後修飾	<p>Prior to secretion, the single-chain precursor is enzymatically cleaved to yield the non-identical chains (alpha, beta and gamma). During activation, the alpha chain is cleaved by C1 into C4a and C4b, and C4b stays linked to the beta and gamma chains. Further degradation of C4b by C1 into the inactive fragments C4c and C4d blocks the generation of C3 convertase.</p> <p>N- and O-glycosylated. O-glycosylated with a core 1 or possibly core 8 glycan.</p>
細胞内局在	<p>Secreted.</p>

画像



Western blot - Anti-C4a antibody (ab66790)

Anti-C4a antibody (ab66790) at 1 µg/ml + Hep G2 (Human) Whole Cell Lysate (**ab52257**) at 10 µg

Secondary

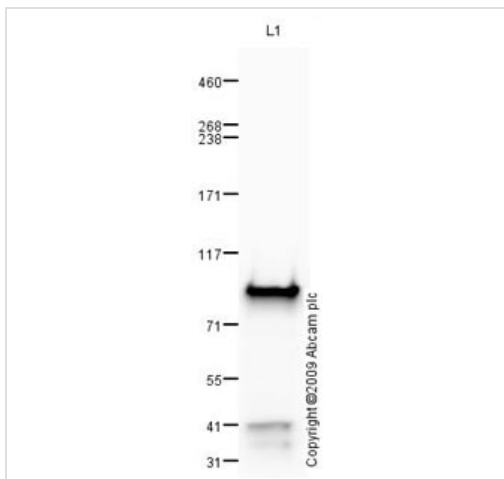
Goat polyclonal to Rabbit IgG - H&L - Pre-Adsorbed (HRP) (**ab65484**) at 1/3000 dilution

Developed using the ECL technique.

Performed under reducing conditions.

Predicted band size: 193 kDa

Observed band size: 193 kDa



Western blot - Anti-C4a antibody (ab66790)

Anti-C4a antibody (ab66790) at 1 µg/ml + Human Plasma Total Protein Lysate at 10 µg

Secondary

Goat polyclonal to Rabbit IgG - H&L - Pre-Adsorbed (HRP) at 1/3000 dilution

Developed using the ECL technique.

Performed under reducing conditions.

Predicted band size: 193 kDa

Observed band size: 95 kDa

Additional bands at: 35 kDa, 41 kDa. We are unsure as to the identity of these extra bands.

Complement C4-A is proteolytically cleaved to yield three non-

identical chains and circulates in blood as a disulphide-linked trimer of an alpha, beta and gamma chain (95, 75 and 33 kDa respectively). We propose that the 95 kDa band corresponds to the alpha chain of Complement C4-A.

Please note: All products are "FOR RESEARCH USE ONLY. NOT FOR USE IN DIAGNOSTIC PROCEDURES"

Our Abpromise to you: Quality guaranteed and expert technical support

- Replacement or refund for products not performing as stated on the datasheet
- Valid for 12 months from date of delivery
- Response to your inquiry within 24 hours
- We provide support in Chinese, English, French, German, Japanese and Spanish
- Extensive multi-media technical resources to help you
- We investigate all quality concerns to ensure our products perform to the highest standards

If the product does not perform as described on this datasheet, we will offer a refund or replacement. For full details of the Abpromise, please visit <https://www.abcam.co.jp/abpromise> or contact our technical team.

Terms and conditions

- Guarantee only valid for products bought direct from Abcam or one of our authorized distributors