

### Anti-C3a / C3a des Arg antibody [K13/16] ab36385

**5 References**   [画像数 4](#)

#### 製品の概要

製品名	Anti-C3a / C3a des Arg antibody [K13/16]
製品の詳細	Mouse monoclonal [K13/16] to C3a / C3a des Arg
由来種	Mouse
特異性	Does not cross react with C4a or C5a.
アプリケーション	<b>適用あり:</b> IHC-P
種交差性	<b>交差種:</b> Human
免疫原	Full length native protein (purified). This information is proprietary to Abcam and/or its suppliers.
エピトープ	Recognizes an epitope present on human C3, C3a and C3a(desArg).
特記事項	Effectively inhibits the biological activity of C3a in a guinea-pig platelet activation assay.  The Life Science industry has been in the grips of a reproducibility crisis for a number of years. Abcam is leading the way in addressing this with our range of recombinant monoclonal antibodies and knockout edited cell lines for gold-standard validation. Please check that this product meets your needs before purchasing.  If you have any questions, special requirements or concerns, please send us an inquiry and/or contact our Support team ahead of purchase. Recommended alternatives for this product can be found below, along with publications, customer reviews and Q&As

#### 製品の特性

製品の状態	Liquid
保存方法	Shipped at 4°C. Store at +4°C short term (1-2 weeks). Upon delivery aliquot. Store at -20°C. Avoid freeze / thaw cycle.
バッファー	pH: 7.40
精製度	Protein A purified
一次抗体 備考	Effectively inhibits the biological activity of C3a in a guinea-pig platelet activation assay.
ポリ/モノ	モノクローナル
クローン名	K13/16
アイソタイプ	IgG1
軽鎖の種類	kappa

## アプリケーション

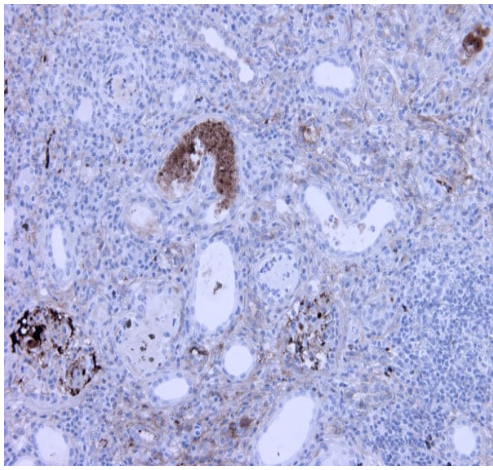
The Abpromise guarantee Abpromise保証は、次のテスト済みアプリケーションにおけるab36385の使用に適用されます  
アプリケーションノートには、推奨の開始希釈率がありますが、適切な希釈率につきましてはご確認ください。

アプリケーション	Abreviews	特記事項
IHC-P		1/150.

## ターゲット情報

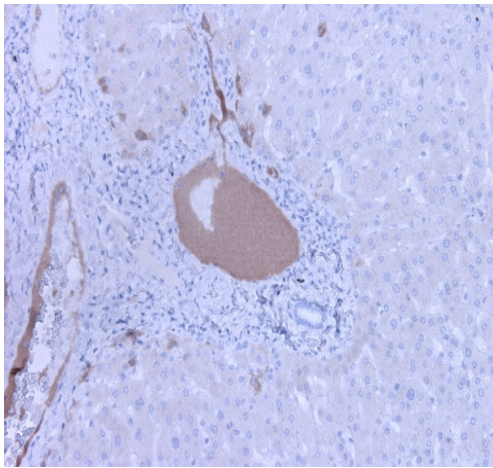
機能	<p>C3 plays a central role in the activation of the complement system. Its processing by C3 convertase is the central reaction in both classical and alternative complement pathways. After activation C3b can bind covalently, via its reactive thioester, to cell surface carbohydrates or immune aggregates.</p> <p>Derived from proteolytic degradation of complement C3, C3a anaphylatoxin is a mediator of local inflammatory process. It induces the contraction of smooth muscle, increases vascular permeability and causes histamine release from mast cells and basophilic leukocytes.</p>
組織特異性	Plasma.
関連疾患	<p>Defects in C3 are the cause of complement component 3 deficiency (C3D) [MIM:613779]. A rare defect of the complement classical pathway. Patients develop recurrent, severe, pyogenic infections because of ineffective opsonization of pathogens. Some patients may also develop autoimmune disorders, such as arthralgia and vasculitic rashes, lupus-like syndrome and membranoproliferative glomerulonephritis.</p> <p>Genetic variation in C3 is associated with susceptibility to age-related macular degeneration type 9 (ARMD9) [MIM:611378]. ARMD is a multifactorial eye disease and the most common cause of irreversible vision loss in the developed world. In most patients, the disease is manifest as ophthalmoscopically visible yellowish accumulations of protein and lipid that lie beneath the retinal pigment epithelium and within an elastin-containing structure known as Bruch membrane.</p> <p>Defects in C3 are a cause of susceptibility to hemolytic uremic syndrome atypical type 5 (AHUS5) [MIM:612925]. An atypical form of hemolytic uremic syndrome. It is a complex genetic disease characterized by microangiopathic hemolytic anemia, thrombocytopenia, renal failure and absence of episodes of enterocolitis and diarrhea. In contrast to typical hemolytic uremic syndrome, atypical forms have a poorer prognosis, with higher death rates and frequent progression to end-stage renal disease. Note=Susceptibility to the development of atypical hemolytic uremic syndrome can be conferred by mutations in various components of or regulatory factors in the complement cascade system. Other genes may play a role in modifying the phenotype.</p>
配列類似性	<p>Contains 1 anaphylatoxin-like domain.</p> <p>Contains 1 NTR domain.</p>
翻訳後修飾	<p>C3b is rapidly split in two positions by factor I and a cofactor to form iC3b (inactivated C3b) and C3f which is released. Then iC3b is slowly cleaved (possibly by factor I) to form C3c (beta chain + alpha' chain fragment 1 + alpha' chain fragment 2), C3dg and C3f. Other proteases produce other fragments such as C3d or C3g.</p> <p>Phosphorylation sites are present in the extracellular medium.</p>
細胞内局在	Secreted.

## 画像



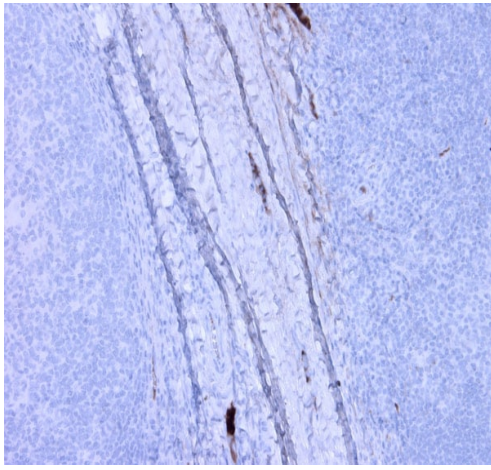
Immunohistochemistry (Formalin/PFA-fixed paraffin-embedded sections) analysis of human kidney tissue labelling C3a / C3a des Arg with ab36385 at a dilution of 1/150. Strong staining is visible in the of veins of nephritis.

Immunohistochemistry (Formalin/PFA-fixed paraffin-embedded sections) - Anti-C3a / C3a des Arg antibody [K13/16] (ab36385)



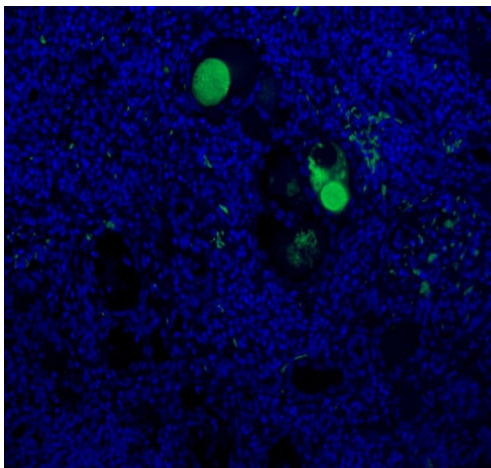
Immunohistochemistry (Formalin/PFA-fixed paraffin-embedded sections) analysis of human liver tissue labelling C3a / C3a des Arg with ab36385 at a dilution of 1/150. Strong staining is visible in the veins.

Immunohistochemistry (Formalin/PFA-fixed paraffin-embedded sections) - Anti-C3a / C3a des Arg antibody [K13/16] (ab36385)



Immunohistochemistry (Formalin/PFA-fixed paraffin-embedded sections) - Anti-C3a / C3a des Arg antibody [K13/16] (ab36385)

Immunohistochemistry (Formalin/PFA-fixed paraffin-embedded sections) analysis of human tonsil tissue labelling C3a / C3a des Arg with ab36385 at a dilution of 1/150. Strong staining is visible in the lumen of veins.



Immunohistochemistry (Formalin/PFA-fixed paraffin-embedded sections) - Anti-C3a / C3a des Arg antibody [K13/16] (ab36385)

Immunohistochemistry (Formalin/PFA-fixed paraffin-embedded sections) analysis of human kidney tissue labelling C3a / C3a des Arg with ab36385 at a dilution of 1/75. Strong staining is visible in the of veins of nephritis.

**Please note:** All products are "FOR RESEARCH USE ONLY. NOT FOR USE IN DIAGNOSTIC PROCEDURES"

### Our Abpromise to you: Quality guaranteed and expert technical support

- Replacement or refund for products not performing as stated on the datasheet
- Valid for 12 months from date of delivery
- Response to your inquiry within 24 hours
- We provide support in Chinese, English, French, German, Japanese and Spanish
- Extensive multi-media technical resources to help you
- We investigate all quality concerns to ensure our products perform to the highest standards

If the product does not perform as described on this datasheet, we will offer a refund or replacement. For full details of the Abpromise,

please visit <https://www.abcam.co.jp/abpromise> or contact our technical team.

## **Terms and conditions**

---

- Guarantee only valid for products bought direct from Abcam or one of our authorized distributors