

### Anti-C2 antibody ab97461

面格新 1

医薬用外劇物

#### 製品の概要

製品名	Anti-C2 antibody
製品の詳細	Rabbit polyclonal to C2
由来種	Rabbit
アプリケーション	<b>適用あり:</b> WB
種交差性	<b>交差種:</b> Human
免疫原	Recombinant fragment, corresponding to a sequence within amino acids 265-612 of Human C2.
ポジティブ・コントロール	293T, A431, H1299, HeLaS3, HepG2, MOLT4 or Raji cell lysate.
特記事項	<p>The Life Science industry has been in the grips of a reproducibility crisis for a number of years. Abcam is leading the way in addressing this with our range of recombinant monoclonal antibodies and knockout edited cell lines for gold-standard validation. Please check that this product meets your needs before purchasing.</p> <p>If you have any questions, special requirements or concerns, please send us an inquiry and/or contact our Support team ahead of purchase. Recommended alternatives for this product can be found below, along with publications, customer reviews and Q&amp;As</p>

#### 製品の特性

製品の状態	Liquid
保存方法	Shipped at 4°C. Upon delivery aliquot and store at -20°C or -80°C. Avoid repeated freeze / thaw cycles.
バッファー	<p>pH: 7.00</p> <p>Preservative: 0.01% Thimerosal (merthiolate)</p> <p>Constituents: 1.21% Tris, 0.75% Glycine, 10% Glycerol (glycerin, glycerine)</p>
精製度	Immunogen affinity purified
ポリ/モノ	ポリクローナル
アイソタイプ	IgG

#### アプリケーション

## The Abpromise guarantee

**Abpromise保証は、**次のテスト済みアプリケーションにおけるab97461の使用に適用されます

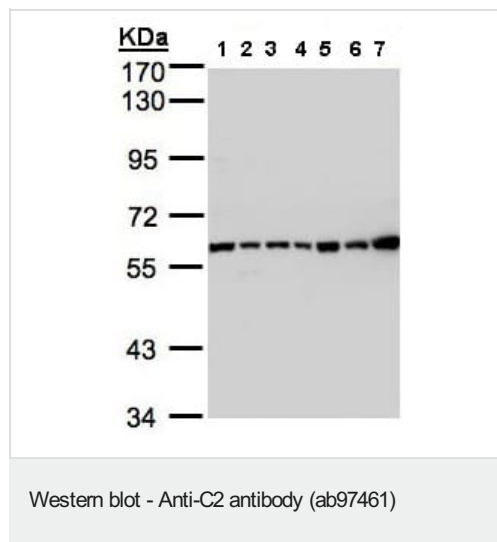
アプリケーションノートには、推奨の開始希釈率がありますが、適切な希釈率につきましてはご確認ください。

アプリケーション	Abreviews	特記事項
WB		1/500 - 1/3000. Predicted molecular weight: 83 kDa.

## ターゲット情報

機能	Component C2 which is part of the classical pathway of the complement system is cleaved by activated factor C1 into two fragments: C2b and C2a. C2a, a serine protease, then combines with complement factor 4b to generate the C3 or C5 convertase.
関連疾患	Defects in C2 are the cause of complement component 2 deficiency (C2D) [MIM:217000]. A deficiency of the complement classical pathway associated with the development of autoimmune disorders, mainly systemic lupus erythematosus. Skin and joint manifestations are common and renal disease is relatively rare. Patients with complement component 2 deficiency are also reported to have recurrent or invasive infections.
配列類似性	Belongs to the peptidase S1 family. Contains 1 peptidase S1 domain. Contains 3 Sushi (CCP/SCR) domains. Contains 1 VWFA domain.
細胞内局在	Secreted.

## 画像



**All lanes :** Anti-C2 antibody (ab97461) at 1/1000 dilution

**Lane 1 :** 293T

whole cell lysate

**Lane 2 :** A431 whole cell lysate

**Lane 3 :** H1299

whole cell lysate

**Lane 4 :** HeLa S3 whole cell lysate

**Lane 5 :** Hep G2 whole cell lysate

**Lane 6 :** MOLT4 whole cell lysate

**Lane 7 :** Raji whole cell lysate

Lysates/proteins at 30 µg per lane.

**Predicted band size:** 83 kDa

7.5% SDS-PAGE.

**Please note:** All products are "FOR RESEARCH USE ONLY. NOT FOR USE IN DIAGNOSTIC PROCEDURES"

### **Our Abpromise to you: Quality guaranteed and expert technical support**

---

- Replacement or refund for products not performing as stated on the datasheet
- Valid for 12 months from date of delivery
- Response to your inquiry within 24 hours
- We provide support in Chinese, English, French, German, Japanese and Spanish
- Extensive multi-media technical resources to help you
- We investigate all quality concerns to ensure our products perform to the highest standards

If the product does not perform as described on this datasheet, we will offer a refund or replacement. For full details of the Abpromise, please visit <https://www.abcam.co.jp/abpromise> or contact our technical team.

### **Terms and conditions**

---

- Guarantee only valid for products bought direct from Abcam or one of our authorized distributors