

### Anti-C1s antibody [M81] ab81707

★★★★★ [1 Abreviews](#) [1 References](#) [画像数 1](#)

#### 製品の概要

製品名	Anti-C1s antibody [M81]
製品の詳細	Mouse monoclonal [M81] to C1s
由来種	Mouse
特異性	ab81707 reacts around the binding site of C1s and reacts with both active and inactive C1s.
アプリケーション	<b>適用あり:</b> IHC-P
種交差性	<b>交差種:</b> Human
免疫原	The details of the immunogen for this antibody are not available.
エピトープ	ab81707 reacts with an epitope on human C protein activated C1s, a subcomponent of the first component of C (C1). The epitope recognized by ab81707 is domain IV and/or V of the gamma domain of activated C1s.
ポジティブ・コントロール	IHC-P: Human liver melanoma cells.
特記事項	<p>The Life Science industry has been in the grips of a reproducibility crisis for a number of years. Abcam is leading the way in addressing this with our range of recombinant monoclonal antibodies and knockout edited cell lines for gold-standard validation. Please check that this product meets your needs before purchasing.</p> <p>If you have any questions, special requirements or concerns, please send us an inquiry and/or contact our Support team ahead of purchase. Recommended alternatives for this product can be found below, along with publications, customer reviews and Q&amp;As</p>

#### 製品の特性

製品の状態	Liquid
保存方法	Shipped at 4°C. Upon delivery aliquot and store at -20°C. Avoid freeze / thaw cycles.
バッファー	Constituents: 0.1% BSA, PBS
特記事項(精製)	ab81707 is a purified, 0.2 µm filtered solution.
ポリ/モノ	モノクローナル
クローン名	M81
アイソタイプ	IgG1

## アプリケーション

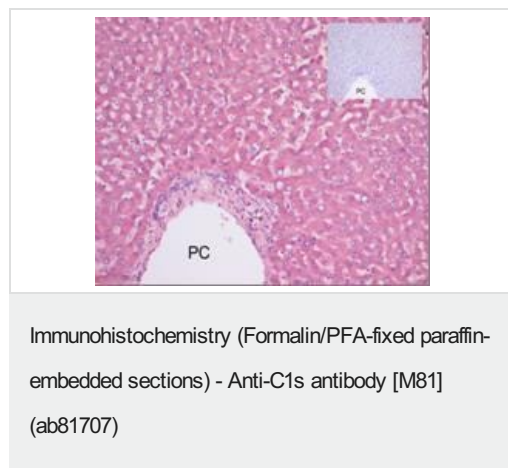
**The Abpromise guarantee** Abpromise保証は、 次のテスト済みアプリケーションにおけるab81707の使用に適用されます  
アプリケーションノートには、推奨の開始希釈率がありますが、適切な希釈率につきましてはご確認ください。

アプリケーション	Abreviews	特記事項
IHC-P	★★★★★ (1)	Use at an assay dependent concentration.

## ターゲット情報

機能	C1s B chain is a serine protease that combines with C1q and C1s to form C1, the first component of the classical pathway of the complement system. C1r activates C1s so that it can, in turn, activate C2 and C4.
関連疾患	Defects in C1S are the cause of complement component C1s deficiency (C1SD) [MIM:613783]. A rare defect resulting in C1 deficiency and impaired activation of the complement classical pathway. C1 deficiency generally leads to severe immune complex disease with features of systemic lupus erythematosus and glomerulonephritis.
配列類似性	Belongs to the peptidase S1 family. Contains 2 CUB domains. Contains 1 EGF-like domain. Contains 1 peptidase S1 domain. Contains 2 Sushi (CCP/SCR) domains.
翻訳後修飾	The iron and 2-oxoglutarate dependent 3-hydroxylation of aspartate and asparagine is (R) stereospecific within EGF domains.

## 画像



ab81707, at a dilution of 1/50, staining paraffin embedded human liver melanoma cells by Immunohistochemistry. Insert is isotype control.

**Please note:** All products are "FOR RESEARCH USE ONLY. NOT FOR USE IN DIAGNOSTIC PROCEDURES"

## Our Abpromise to you: Quality guaranteed and expert technical support

- Replacement or refund for products not performing as stated on the datasheet

- Valid for 12 months from date of delivery
- Response to your inquiry within 24 hours
- We provide support in Chinese, English, French, German, Japanese and Spanish
- Extensive multi-media technical resources to help you
- We investigate all quality concerns to ensure our products perform to the highest standards

If the product does not perform as described on this datasheet, we will offer a refund or replacement. For full details of the Abpromise, please visit <https://www.abcam.co.jp/abpromise> or contact our technical team.

#### **Terms and conditions**

---

- Guarantee only valid for products bought direct from Abcam or one of our authorized distributors