

Anti-C14orf106 antibody ab89265

画像数 3

製品の概要

製品名	Anti-C14orf106 antibody
製品の詳細	Mouse polyclonal to C14orf106
由来種	Mouse
アプリケーション	適用あり: WB, ICC/IF
種交差性	交差種: Human
免疫原	Recombinant full length protein within Human C14orf106. The exact immunogen sequence used to generate this antibody is proprietary information. If additional detail on the immunogen is needed to determine the suitability of the antibody for your needs, please contact our Scientific Support team to discuss your requirements.
ポジティブ・コントロール	WB: Human spleen tissue lysate, C14orf106 transfected 293T cell lysate ICC/IF: HeLa cell
特記事項	<p>The Life Science industry has been in the grips of a reproducibility crisis for a number of years. Abcam is leading the way in addressing this with our range of recombinant monoclonal antibodies and knockout edited cell lines for gold-standard validation. Please check that this product meets your needs before purchasing.</p> <p>If you have any questions, special requirements or concerns, please send us an inquiry and/or contact our Support team ahead of purchase. Recommended alternatives for this product can be found below, along with publications, customer reviews and Q&As</p>

製品の特性

製品の状態	Liquid
保存方法	Shipped at 4°C. Upon delivery aliquot and store at -20°C or -80°C. Avoid repeated freeze / thaw cycles.
バッファー	pH: 7.40 Constituent: 100% PBS
精製度	Protein A purified
ポリ/モノ	ポリクローナル
アイソタイプ	IgG

アプリケーション

The Abpromise guarantee

Abpromise保証は、次のテスト済みアプリケーションにおけるab89265の使用に適用されます

アプリケーションノートには、推奨の開始希釈率がありますが、適切な希釈率につきましてはご確認ください。

アプリケーション	Abreviews	特記事項
WB		
ICC/IF		

追加情報

ICC/IF: Use at a concentration of 10 µg/ml.

WB: Use at a concentration of 1 µg/ml. Predicted molecular weight: 129 kDa for isoform 1 and 44 kDa for isoform 2.

Not yet tested in other applications.

Optimal dilutions/concentrations should be determined by the end user.

ターゲット情報

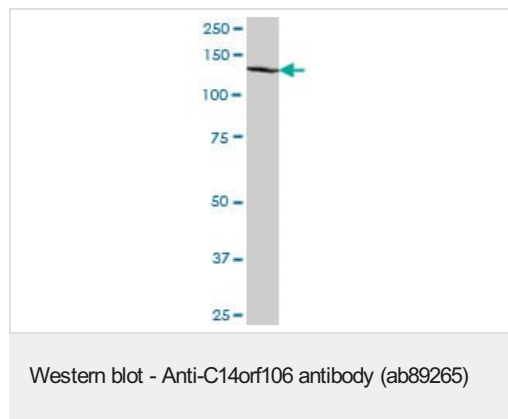
関連性

C14orf106 is required for recruitment of CENPA to centromeres and normal chromosome segregation during mitosis. It interacts with SP1. There are two isoforms.

細胞内局在

Nucleus. Centromere. Note: Associated with centromeres in interphase cells, from late anaphase to the G1 phase. Not detected on centromeres during earlier phases of mitosis. Associated with chromatin.

画像

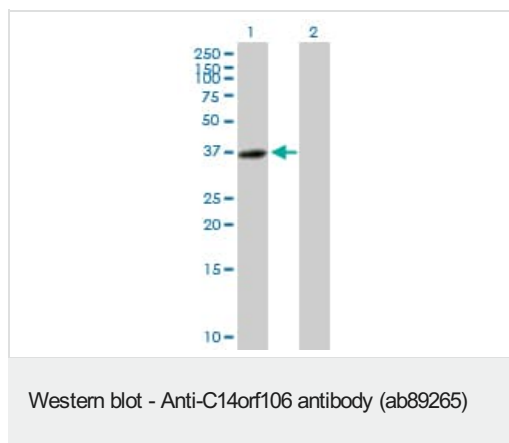


Anti-C14orf106 antibody (ab89265) at 1 µg/ml + human spleen tissue lysate at 50 µg

Developed using the ECL technique.

Predicted band size: 129 , 44 kDa

Observed band size: ~129 kDa



All lanes : Anti-C14orf106 antibody (ab89265) at 1 µg/ml

Lane 1 : C14orf106 transfected 293T cell lysate

Lane 2 : Non transfected 293T cell lysate

Lysates/proteins at 25 µg per lane.

Developed using the ECL technique.

Predicted band size: 129 , 44 kDa

Observed band size: 37 kDa



ab89265, at 10 µg/ml, staining C14orf106 in HeLa cell by Immunofluorescence.

Please note: All products are "FOR RESEARCH USE ONLY. NOT FOR USE IN DIAGNOSTIC PROCEDURES"

Our Abpromise to you: Quality guaranteed and expert technical support

- Replacement or refund for products not performing as stated on the datasheet
- Valid for 12 months from date of delivery
- Response to your inquiry within 24 hours
- We provide support in Chinese, English, French, German, Japanese and Spanish
- Extensive multi-media technical resources to help you
- We investigate all quality concerns to ensure our products perform to the highest standards

If the product does not perform as described on this datasheet, we will offer a refund or replacement. For full details of the Abpromise, please visit <https://www.abcam.co.jp/abpromise> or contact our technical team.

Terms and conditions

- Guarantee only valid for products bought direct from Abcam or one of our authorized distributors