


### Anti-c-Myc (phospho T58) antibody ab28842

★★★★★ **3 Abreviews**   **26 References**   画像数 3

#### 製品の概要

製品名	Anti-c-Myc (phospho T58) antibody
製品の詳細	Rabbit polyclonal to c-Myc (phospho T58)
由来種	Rabbit
アプリケーション	<b>適用あり:</b> IHC-P, ICC/IF, WB
種交差性	<b>交差種:</b> Human <b>交差が予測される動物種:</b> Mouse 
免疫原	<p>Synthetic peptide within Human c-Myc aa 1-100 (phospho T58). The exact immunogen sequence used to generate this antibody is proprietary information. If additional detail on the immunogen is needed to determine the suitability of the antibody for your needs, please <b><u>contact</u></b> our Scientific Support team to discuss your requirements.</p> <p>Database link: <b><u>P01106</u></b></p>
ポジティブ・コントロール	Ovarian cancer cell lysate, breast carcinoma tissue.
特記事項	<p>The Life Science industry has been in the grips of a reproducibility crisis for a number of years. Abcam is leading the way in addressing this with our range of recombinant monoclonal antibodies and knockout edited cell lines for gold-standard validation. Please check that this product meets your needs before purchasing.</p> <p>If you have any questions, special requirements or concerns, please send us an inquiry and/or contact our Support team ahead of purchase. Recommended alternatives for this product can be found below, along with publications, customer reviews and Q&amp;As</p>

#### 製品の特性

製品の状態	Liquid
保存方法	Shipped at 4°C. Store at +4°C short term (1-2 weeks). Upon delivery aliquot. Store at -20°C long term.
バッファー	<p>pH: 7.40</p> <p>Preservative: 0.02% Sodium azide</p> <p>Constituents: 50% Glycerol (glycerin, glycerine), 0.87% Sodium chloride</p>
精製度	<p>Without Mg<sup>2+</sup> and Ca<sup>2+</sup></p> <p>Immunogen affinity purified</p>

特記事項 (精製)	The antibody was affinity-purified from rabbit antiserum by affinity-chromatography using epitope-specific phosphopeptide. The antibody against non-phosphopeptide was removed by chromatography using non-phosphopeptide corresponding to the phosphorylation site.
ポリ/モノ	ポリクローナル
アイソタイプ	IgG

## アプリケーション

**The Abpromise guarantee**      **Abpromise保証は、次のテスト済みアプリケーションにおけるab28842の使用に適用されます**  
 アプリケーションノートには、推奨の開始希釈率がありますが、適切な希釈率につきましてはご確認ください。

アプリケーション	Abreviews	特記事項
IHC-P		Use at an assay dependent concentration.
ICC/IF		Use a concentration of 1 µg/ml.
WB	★★★★★ (3)	1/500 - 1/1000. Predicted molecular weight: 49 kDa.

## ターゲット情報

**機能**  
 Participates in the regulation of gene transcription. Binds DNA in a non-specific manner, yet also specifically recognizes the core sequence 5'-CAC[GA]TG-3'. Seems to activate the transcription of growth-related genes.

**関連疾患**  
 Note=Overexpression of MYC is implicated in the etiology of a variety of hematopoietic tumors.  
 Note=A chromosomal aberration involving MYC may be a cause of a form of B-cell chronic lymphocytic leukemia. Translocation t(8;12)(q24;q22) with BTG1.  
 Defects in MYC are a cause of Burkitt lymphoma (BL) [MIM:113970]. A form of undifferentiated malignant lymphoma commonly manifested as a large osteolytic lesion in the jaw or as an abdominal mass. Note=Chromosomal aberrations involving MYC are usually found in Burkitt lymphoma. Translocations t(8;14), t(8;22) or t(2;8) which juxtapose MYC to one of the heavy or light chain immunoglobulin gene loci.

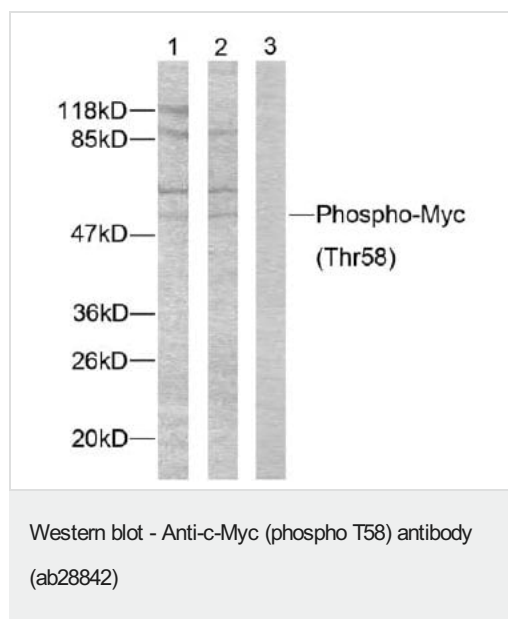
**配列類似性**  
 Contains 1 basic helix-loop-helix (bHLH) domain.

**翻訳後修飾**  
 Phosphorylated by PRKDC. Phosphorylation at Thr-58 and Ser-62 by GSK3 is required for ubiquitination and degradation by the proteasome.  
 Ubiquitinated by the SCF(FBXW7) complex when phosphorylated at Thr-58 and Ser-62, leading to its degradation by the proteasome. In the nucleoplasm, ubiquitination is counteracted by USP28, which interacts with isoform 1 of FBXW7 (FBW7alpha), leading to its deubiquitination and preventing degradation. In the nucleolus, however, ubiquitination is not counteracted by USP28, due to the lack of interaction between isoform 4 of FBXW7 (FBW7gamma) and USP28, explaining the selective MYC degradation in the nucleolus. Also polyubiquitinated by the DCX(TRUSS) complex.

**細胞内局在**  
 Nucleus > nucleoplasm. Nucleus > nucleolus.

**製品の状態**  
 c-Myc is also expressed in the cytoplasm.

## 画像



**Lane 1 :** Anti-c-Myc (phospho T58) antibody (ab28842) at 1/500 dilution

**Lane 2 :** Anti-c-Myc (phospho T58) antibody (ab28842) at 1/500 dilution ( preincubated with synthesized non-phosphopeptide )

**Lane 3 :** Anti-c-Myc (phospho T58) antibody (ab28842) at 1/500 dilution ( preincubated with synthesized phosphopeptide )

**Lanes 1 & 3 :** human ovarian cancer cell lysate

**Lane 2 :** human ovarian cancer cell lysate

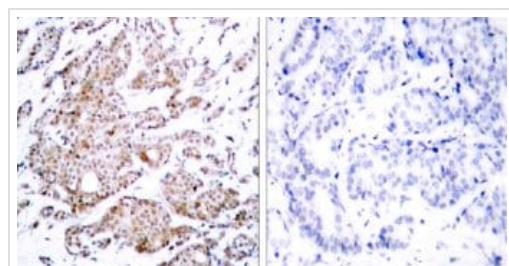
**Predicted band size:** 49 kDa

**Observed band size:** 51 kDa

**Additional bands at:** 120 kDa, 55 kDa, 86 kDa. We are unsure as to the identity of these extra bands.

Immunocytochemistry/ Immunofluorescence - Anti-c-Myc (phospho T58) antibody (ab28842)

ICC/IF image of **ab28864** stained HeLa cells. The cells were 4% PFA fixed (10 min) and then incubated in 1% BSA / 10% normal goat serum / 0.3M glycine in 0.1% PBS-Tween for 1h to permeabilise the cells and block non-specific protein-protein interactions. The cells were then incubated with the antibody (**ab28864**, 1µg/ml) overnight at +4°C. The secondary antibody (green) was Alexa Fluor® 488 goat anti-rabbit IgG (H+L) used at a 1/1000 dilution for 1h. Alexa Fluor® 594 WGA was used to label plasma membranes (red) at a 1/200 dilution for 1h. DAPI was used to stain the cell nuclei (blue) at a concentration of 1.43µM.



Immunohistochemical analysis of paraffin-embedded breast carcinoma. Left: Using Myc (Phospho-Thr58) Antibody; Right: The same antibody preincubated with synthesized phosphopeptide.

Immunohistochemistry (Formalin/PFA-fixed paraffin-embedded sections) - Anti-c-Myc (phospho T58) antibody (ab28842)

**Please note:** All products are "FOR RESEARCH USE ONLY. NOT FOR USE IN DIAGNOSTIC PROCEDURES"

### **Our Abpromise to you: Quality guaranteed and expert technical support**

---

- Replacement or refund for products not performing as stated on the datasheet
- Valid for 12 months from date of delivery
- Response to your inquiry within 24 hours
  
- We provide support in Chinese, English, French, German, Japanese and Spanish
- Extensive multi-media technical resources to help you
- We investigate all quality concerns to ensure our products perform to the highest standards

If the product does not perform as described on this datasheet, we will offer a refund or replacement. For full details of the Abpromise, please visit <https://www.abcam.co.jp/abpromise> or contact our technical team.

### **Terms and conditions**

---

- Guarantee only valid for products bought direct from Abcam or one of our authorized distributors