

Anti-c-Myb antibody [ANA236B] ab169111

KO 評価済

画像数 2

製品の概要

| | |
|----------|--|
| 製品名 | Anti-c-Myb antibody [ANA236B] |
| 製品の詳細 | Rat monoclonal [ANA236B] to c-Myb |
| 由来種 | Rat |
| アプリケーション | 適用あり: WB 適用なし: ICC,IHC-Fr,IHC-P or IP |
| 種交差性 | 交差種: Human 交差が予測される動物種: Mouse, Cow  |
| 免疫原 | Recombinant fragment (His-tag) corresponding to Human c-Myb aa 402-640. Sequence: FLNTSSNHE NSDLEMPSLT STPLIGHKLT VTTPFHRDQT VKTQKENTVF RTPAIKRSIL ESSPRTPTPF KHALAAQEIK YGPLKMLPQT PSHLVEDLQD VIKQESDESG IVAEFQENGP PLLKKIKQEV ESPTDKSGNF FCSHHWEGDS LNTQLFTQTS PVADAPNILT SSVLMAPASE DEDNVLKRAFT VPKNRSLASP LQPCSSTWEP ASCGKMEEQM TSSSQARKYV NAFSARTLVM |

Database link: [P10242](#)

 [Run BLAST with](#)

 [Run BLAST with](#)

ポジティブ・コントロール

Recombinant Human c-Myb protein ([ab114406](#)) can be used as a positive control in WB. Hek-V5-c-Myb transfected cells; KARPAS299, Jurkat, MT2 and SUP-T1 cell lysates; Human thymus, bone marrow and lymphoblastic lymphoma tissues.

特記事項

The Life Science industry has been in the grips of a reproducibility crisis for a number of years. Abcam is leading the way in addressing this with our range of recombinant monoclonal antibodies and knockout edited cell lines for gold-standard validation. Please check that this product meets your needs before purchasing.

If you have any questions, special requirements or concerns, please send us an inquiry and/or contact our Support team ahead of purchase. Recommended alternatives for this product can be found below, along with publications, customer reviews and Q&As

製品の特性

| | |
|--------|--|
| 製品の状態 | Liquid |
| 保存方法 | Shipped at 4°C. Upon delivery aliquot. Store at +4°C. Do Not Freeze. |
| バッファー | pH: 7.4 Preservative: 0.02% Sodium azide Constituents: PBS, 1% BSA |
| ポリ/モノ | モノクローナル |
| クローン名 | ANA236B |
| アイソタイプ | IgG2a |

アプリケーション

The Abpromise guarantee Abpromise保証は、次のテスト済みアプリケーションにおけるab169111の使用に適用されます
アプリケーションノートには、推奨の開始希釈率がありますが、適切な希釈率につきましてはご検討ください。

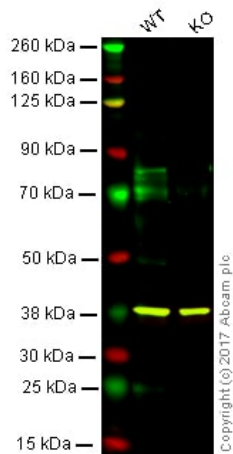
| アプリケーション | Abreviews | 特記事項 |
|----------|-----------|---|
| WB | | 1/50. Predicted molecular weight: 72 kDa. |

追加情報 Is unsuitable for ICC,IHC-Fr,IHC-P or IP.

ターゲット情報

| | |
|-------|---|
| 機能 | Transcriptional activator; DNA-binding protein that specifically recognize the sequence 5'-YAAC[GT]G-3'. Plays an important role in the control of proliferation and differentiation of hematopoietic progenitor cells. |
| 配列類似性 | Contains 3 HTH myb-type DNA-binding domains. |
| ドメイン | Comprised of 3 domains; an N-terminal DNA-binding domain, a centrally located transcriptional activation domain and a C-terminal domain involved in transcriptional repression. |
| 翻訳後修飾 | Ubiquitinated; mediated by SIAH1 and leading to its subsequent proteasomal degradation. Phosphorylated by NLK on multiple sites, which induces proteasomal degradation. |
| 細胞内局在 | Nucleus. |

画像



Western blot - Anti-c-Myb antibody [ANA236B] (ab169111)

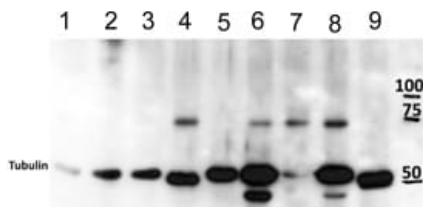
Lane 1: Wild-type HAP1 whole cell lysate (20 µg)

Lane 2: c-Myb knockout HAP1 whole cell lysate (20 µg)

Lanes 1 - 2: Merged signal (red and green). Green - ab169111 observed at 75 kDa. Red - loading control, **ab181602**, observed at 37 kDa.

Ab169111 was shown to specifically react with c-Myb, in wild type HAP1 cells as signal was lost in c-Myb knockout cells. Wild-type and c-Myb knockout samples were subjected SDS-PAGE.

Ab169111 and **ab181602** (Rabbit anti-GAPDH loading control) were incubated overnight at 4°C at 1/50 dilution and 1/20000 dilution respectively. Blots were developed with Goat anti-Rat IgG H&L (IRDye® 800CW) (**ab253031**) preabsorbed and Goat anti-Rabbit IgG H&L (IRDye® 680RD) preabsorbed **ab216777** secondary antibodies at 1/10000 dilution for 1 hour at room temperature before imaging.



Western blot - Anti-c-Myb antibody [ANA236B] (ab169111)

All lanes : Anti-c-Myb antibody [ANA236B] (ab169111) at 1/50 dilution

Lane 1 : DAUDI cell lysate

Lane 2 : Ramos cell lysate

Lane 3 : Raji cell lysate

Lane 4 : KARPAS299 cell lysate

Lane 5 : HUT78 cell lysate

Lane 6 : Jurkat cell lysate

Lane 7 : MT2 cell lysate

Lane 8 : SUP-T1 cell lysate

Lane 9 : YT cell lysate

Lysates/proteins at 150 µg per lane.

Predicted band size: 72 kDa

Our Abpromise to you: Quality guaranteed and expert technical support

- Replacement or refund for products not performing as stated on the datasheet
- Valid for 12 months from date of delivery
- Response to your inquiry within 24 hours

- We provide support in Chinese, English, French, German, Japanese and Spanish
- Extensive multi-media technical resources to help you
- We investigate all quality concerns to ensure our products perform to the highest standards

If the product does not perform as described on this datasheet, we will offer a refund or replacement. For full details of the Abpromise, please visit <https://www.abcam.co.jp/abpromise> or contact our technical team.

Terms and conditions

- Guarantee only valid for products bought direct from Abcam or one of our authorized distributors