

### Anti-c-Kit antibody [YR145] ab32363

KO 評価済 リコンビナント RabMAb

★★★★★ [10 Abreviews](#) [50 References](#) [画像数 11](#)

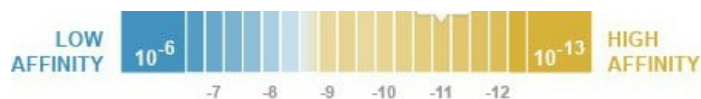
#### 製品の概要

|              |  |
|--------------|--|
| 製品名          | Anti-c-Kit antibody [YR145]  |
| 製品の詳細        | Rabbit monoclonal [YR145] to c-Kit   |
| 由来種          | Rabbit   |
| 特異性          | This antibody is specific to c-Kit. It does not crossreact with other CSF1/PDGF receptor family member.  |
| アプリケーション     | <b>適用あり:</b> IHC-P, WB<br><b>適用なし:</b> Flow Cyt or ICC/IF  |
| 種交差性         | <b>交差種:</b> Human, Common marmoset   |
| 免疫原          | Synthetic peptide. This information is proprietary to Abcam and/or its suppliers.  |
| ポジティブ・コントロール | WB: Human fetal kidney, fetal lung and seminoma tissue lysate. IHC-P: Human lung adenocarcinoma and seminoma tissues.  |
| 特記事項         | <p>This product is a recombinant monoclonal antibody, which offers several advantages including:</p> <ul style="list-style-type: none"> <li>- High batch-to-batch consistency and reproducibility</li> <li>- Improved sensitivity and specificity</li> <li>- Long-term security of supply</li> <li>- Animal-free production</li> </ul> <p>For more information <a href="#">see here</a>.</p> <p>Our RabMAb<sup>®</sup> technology is a patented hybridoma-based technology for making rabbit monoclonal antibodies. For details on our patents, please refer to <a href="#">RabMAb<sup>®</sup> patents</a>.</p> <p>Mouse, Rat: We have preliminary internal testing data to indicate this antibody may not react with these species. Please contact us for more information.</p> |

#### 製品の特性

|                         |   |
|-------------------------|---|
| 製品の状態                   | Liquid  |
| 保存方法                    | Shipped at 4°C. Store at +4°C short term (1-2 weeks). Upon delivery aliquot. Store at -20°C. Avoid freeze / thaw cycle. |
| 解離定数 (K <sub>D</sub> 値) | K <sub>D</sub> = 5.90 x 10 <sup>-11</sup> M   |





[Learn more about K<sub>D</sub>](#)

|        |  |
|--------|--|
| バッファー  | pH: 7.20<br>Preservative: 0.01% Sodium azide<br>Constituents: PBS, 40% Glycerol (glycerin, glycerine), 0.05% BSA |
| 精製度    | Protein A purified   |
| ポリ/モノ  | モノクローナル  |
| クローン名  | YR145  |
| アイソタイプ | IgG  |

## アプリケーション

**The Abpromise guarantee** Abpromise保証は、次のテスト済みアプリケーションにおけるab32363の使用に適用されます  
アプリケーションノートには、推奨の開始希釈率がありますが、適切な希釈率につきましてはご検討ください。

| アプリケーション | Abreviews | 特記事項  |
|----------|-----------|---|
| IHC-P    | ★★★★★ (4) | 1/400. Perform heat mediated antigen retrieval before commencing with IHC staining protocol.<br>See <a href="#">IHC antigen retrieval protocols</a> . |
| WB       | ★★★★★ (1) | 1/1000. Predicted molecular weight: 110 kDa.  |

**追加情報** Is unsuitable for Flow Cyt or ICC/IF.

## ターゲット情報

**機能** Tyrosine-protein kinase that acts as cell-surface receptor for the cytokine KITLG/SCF and plays an essential role in the regulation of cell survival and proliferation, hematopoiesis, stem cell maintenance, gametogenesis, mast cell development, migration and function, and in melanogenesis. In response to KITLG/SCF binding, KIT can activate several signaling pathways. Phosphorylates PIK3R1, PLCG1, SH2B2/APS and CBL. Activates the AKT1 signaling pathway by phosphorylation of PIK3R1, the regulatory subunit of phosphatidylinositol 3-kinase. Activated KIT also transmits signals via GRB2 and activation of RAS, RAF1 and the MAP kinases MAPK1/ERK2 and/or MAPK3/ERK1. Promotes activation of STAT family members STAT1, STAT3, STAT5A and STAT5B. Activation of PLCG1 leads to the production of the cellular signaling molecules diacylglycerol and inositol 1,4,5-trisphosphate. KIT signaling is modulated by protein phosphatases, and by rapid internalization and degradation of the receptor. Activated KIT promotes phosphorylation of the protein phosphatases PTPN6/SHP-1 and PTPRU, and of the transcription factors STAT1, STAT3, STAT5A and STAT5B. Promotes phosphorylation of PIK3R1, CBL, CRK (isoform Crk-II), LYN, MAPK1/ERK2 and/or MAPK3/ERK1, PLCG1, SRC and SHC1.

**組織特異性** Isoform 1 and isoform 2 are detected in spermatogonia and Leydig cells. Isoform 3 is detected in round spermatids, elongating spermatids and spermatozoa (at protein level). Widely expressed. Detected in the hematopoietic system, the gastrointestinal system, in melanocytes and in germ cells.

## 関連疾患

Piebald trait  
Gastrointestinal stromal tumor  
Testicular germ cell tumor  
Leukemia, acute myelogenous

## 配列類似性

Belongs to the protein kinase superfamily. Tyr protein kinase family. CSF-1/PDGF receptor subfamily.  
Contains 5 Ig-like C2-type (immunoglobulin-like) domains.  
Contains 1 protein kinase domain.

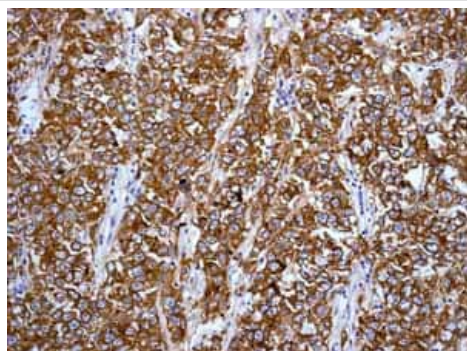
## 翻訳後修飾

Ubiquitinated by SOCS6. KIT is rapidly ubiquitinated after autophosphorylation induced by KITLG/SCF binding, leading to internalization and degradation.  
Autophosphorylated on tyrosine residues. KITLG/SCF binding enhances autophosphorylation. Isoform 1 shows low levels of tyrosine phosphorylation in the absence of added KITLG/SCF (in vitro). Kinase activity is down-regulated by phosphorylation on serine residues by protein kinase C family members. Phosphorylation at Tyr-568 is required for interaction with PTPN11/SHP-2, CRK (isoform Crk-II) and members of the SRC tyrosine-protein kinase family. Phosphorylation at Tyr-570 is required for interaction with PTPN6/SHP-1. Phosphorylation at Tyr-703, Tyr-823 and Tyr-936 is important for interaction with GRB2. Phosphorylation at Tyr-721 is important for interaction with PIK3R1. Phosphorylation at Tyr-823 and Tyr-936 is important for interaction with GRB7.

## 細胞内局在

Cell membrane and Cytoplasm. Detected in the cytoplasm of spermatozoa, especially in the equatorial and subacrosomal region of the sperm head.

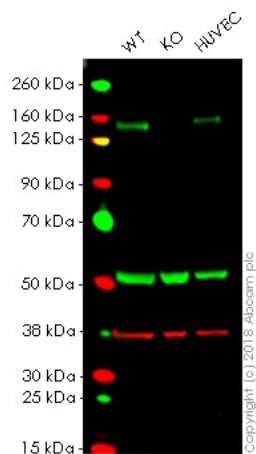
## 画像



Immunohistochemistry (Formalin/PFA-fixed paraffin-embedded sections) analysis of human seminoma tissue labelling c-Kit with unpurified ab32363.

Perform heat mediated antigen retrieval before commencing with IHC staining protocol.

Immunohistochemistry (Formalin/PFA-fixed paraffin-embedded sections) - Anti-c-Kit antibody [YR145] (ab32363)



Western blot - Anti-c-Kit antibody [YR145]  
(ab32363)

**All lanes :** Anti-c-Kit antibody [YR145] (ab32363) at 1/1000 dilution

**Lane 1 :** Wild-type HAP1 whole cell lysate

**Lane 2 :** KIT knockout HAP1 whole cell lysate

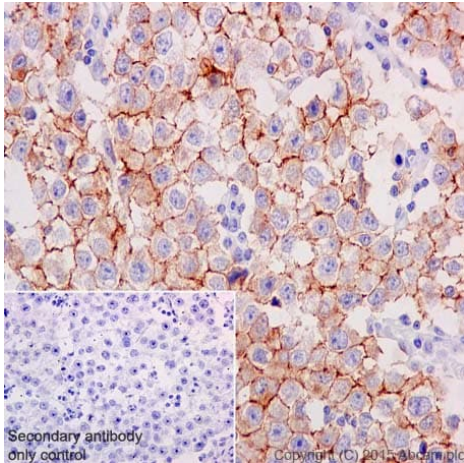
**Lane 3 :** HUVEC whole cell lysate

Lysates/proteins at 40 µg per lane.

**Predicted band size:** 110 kDa

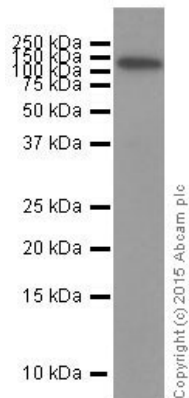
**Lanes 1 - 3:** Merged signal (red and green). Green - ab32363 observed at 109 kDa. Red - loading control, [ab9484](#), observed at 37 kDa.

ab32363 was shown to recognize 0 in wild-type HAP1 cells as signal was lost at the expected MW in KIT knockout cells. Additional cross-reactive bands were observed in the wild-type and knockout cells. Wild-type and KIT knockout samples were subjected to SDS-PAGE. Ab32363 and [ab9484](#) (Mouse anti-GAPDH loading control) were incubated overnight at 4°C at 1/1000 dilution and 1/20000 dilution respectively. Blots were developed with Goat anti-Rabbit IgG H&L (IRDye® 800CW) preabsorbed [ab216773](#) and Goat anti-Mouse IgG H&L (IRDye® 680RD) preabsorbed [ab216776](#) secondary antibodies at 1/20000 dilution for 1 hour at room temperature before imaging.



Immunohistochemistry (Formalin/PFA-fixed paraffin-embedded sections) - Anti-c-Kit antibody [YR145] (ab32363)

Immunohistochemistry (Formalin/PFA-fixed paraffin-embedded sections) analysis of human seminoma tissue labelling c-Kit with purified ab32363 at 1/400. Heat mediated antigen retrieval was performed using Tris/EDTA buffer pH 9. **ab97051**, a HRP-conjugated goat anti-rabbit IgG (H+L) was used as the secondary antibody (1/500). Negative control using PBS instead of primary antibody. Counterstained with hematoxylin.



Western blot - Anti-c-Kit antibody [YR145] (ab32363)

Anti-c-Kit antibody [YR145] (ab32363) at 1/5000 dilution (purified) + Human seminoma tissue lysate at 10 µg

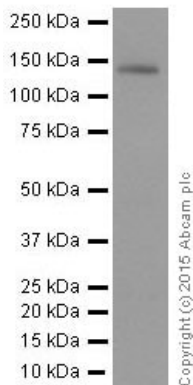
### Secondary

HRP-conjugated anti-rabbit IgG, specific to the non-reduced form of IgG at 1/50000 dilution

**Predicted band size:** 110 kDa

**Observed band size:** 120-145 kDa

Blocking and dilution buffer: 5% NFDm/TBST.



Western blot - Anti-c-Kit antibody [YR145]  
(ab32363)

Anti-c-Kit antibody [YR145] (ab32363) at 1/1000 dilution (purified) +  
Human fetal lung tissue lysate at 10 µg

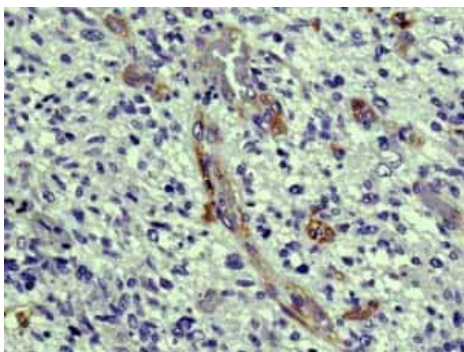
### Secondary

HRP-conjugated anti-rabbit IgG, specific to the non-reduced form of  
IgG at 1/50000 dilution

**Predicted band size:** 110 kDa

**Observed band size:** 120-145 kDa

Blocking and dilution buffer: 5% NFDM/TBST.

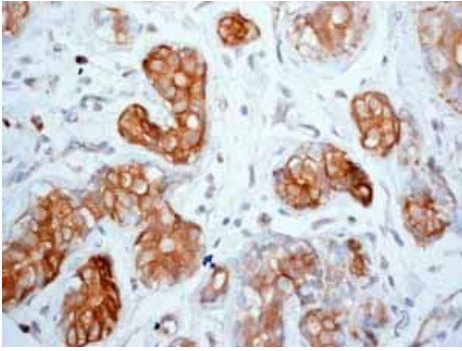


Immunohistochemistry (Formalin/PFA-fixed paraffin-  
embedded sections) - Anti-c-Kit antibody [YR145]  
(ab32363)

Immunohistochemistry (Formalin/PFA-fixed paraffin-embedded  
sections) analysis of human glioma tissue labelling c-Kit with  
unpurified ab32363.

Perform heat mediated antigen retrieval before commencing with  
IHC staining protocol.

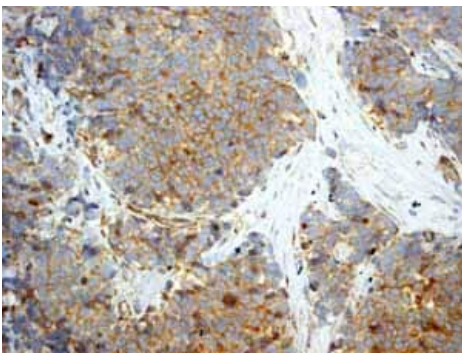




Immunohistochemistry (Formalin/PFA-fixed paraffin-embedded sections) - Anti-c-Kit antibody [YR145] (ab32363)

Immunohistochemistry (Formalin/PFA-fixed paraffin-embedded sections) analysis of human breast carcinoma tissue labelling c-Kit with unpurified ab32363.

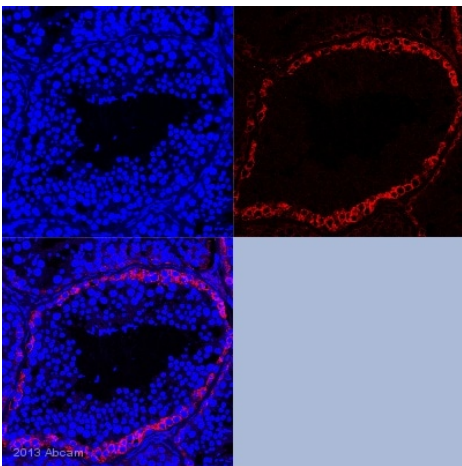
Perform heat mediated antigen retrieval before commencing with IHC staining protocol.



Immunohistochemistry (Formalin/PFA-fixed paraffin-embedded sections) - Anti-c-Kit antibody [YR145] (ab32363)

Immunohistochemistry (Formalin/PFA-fixed paraffin-embedded sections) analysis of human ovarian carcinoma tissue labelling c-Kit with unpurified ab32363.

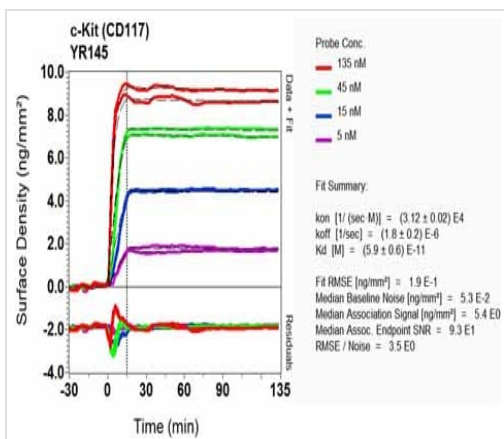
Perform heat mediated antigen retrieval before commencing with IHC staining protocol.



Immunohistochemistry (Formalin/PFA-fixed paraffin-embedded sections) - Anti-c-Kit antibody [YR145] (ab32363)

This image is courtesy of an abreview from Zachary Yu-Ching Lin.

IHC-P image of c-Kit (unpurified ab32363) staining on adult marmoset testis. The sections were fixed in formaldehyde and underwent heat mediated antigen retrieval, using Dako antigen retrieval solution. The sections were then blocked in 5% milk for 30 mins at 25°C. The primary antibody was added at a 1/100 dilution, and then incubated for 18 hours at 4°C. Dapi was used to stain the nuclei (blue).



SPR Scanning - Anti-c-Kit antibody [YR145]  
(ab32363)

Equilibrium dissociation constant ( $K_D$ )

Learn more about  $K_D$

[Click here to learn more about  \$K\_D\$](#)

Why choose a  
recombinant antibody?



**Research with  
confidence**  
Consistent and  
reproducible results



**Long-term and  
scalable supply**  
Recombinant  
technology



**Success from the  
first experiment**  
Confirmed  
specificity



**Ethical standards  
compliant**  
Animal-free  
production

Anti-c-Kit antibody [YR145] (ab32363)

**Please note:** All products are "FOR RESEARCH USE ONLY. NOT FOR USE IN DIAGNOSTIC PROCEDURES"

### Our Abpromise to you: Quality guaranteed and expert technical support

- Replacement or refund for products not performing as stated on the datasheet
- Valid for 12 months from date of delivery
- Response to your inquiry within 24 hours
- We provide support in Chinese, English, French, German, Japanese and Spanish
- Extensive multi-media technical resources to help you
- We investigate all quality concerns to ensure our products perform to the highest standards

If the product does not perform as described on this datasheet, we will offer a refund or replacement. For full details of the Abpromise, please visit <https://www.abcam.co.jp/abpromise> or contact our technical team.



## Terms and conditions

---

- Guarantee only valid for products bought direct from Abcam or one of our authorized distributors