

# Anti-BTAF1 antibody ab72285

[1 References](#) [画像数 2](#)

### 製品の概要

---

製品名	Anti-BTAF1 antibody
製品の詳細	Rabbit polyclonal to BTAF1
由来種	Rabbit
アプリケーション	<b>適用あり:</b> WB, IP
種交差性	<b>交差種:</b> Human <b>交差が予測される動物種:</b> Chimpanzee, Rhesus monkey 
免疫原	Synthetic peptide corresponding to Human BTAF1 aa 75-125. Database link: <a href="#">NP_003963.1</a>
ポジティブ・コントロール	Whole cell lysates from HeLa and 293T cells.
特記事項	<p>The Life Science industry has been in the grips of a reproducibility crisis for a number of years. Abcam is leading the way in addressing this with our range of recombinant monoclonal antibodies and knockout edited cell lines for gold-standard validation. Please check that this product meets your needs before purchasing.</p> <p>If you have any questions, special requirements or concerns, please send us an inquiry and/or contact our Support team ahead of purchase. Recommended alternatives for this product can be found below, along with publications, customer reviews and Q&amp;As</p>

### 製品の特性

---

製品の状態	Liquid
保存方法	Shipped at 4°C. Upon delivery aliquot and store at -20°C. Avoid freeze / thaw cycles.
バッファー	pH: 7 Preservative: 0.09% Sodium azide Constituents: 1.815% Tris, 1.764% Sodium citrate, 0.021% PBS
精製度	Immunogen affinity purified
ポリ/モノ	ポリクローナル
アイソタイプ	IgG

### アプリケーション

---

## The Abpromise guarantee

**Abpromise保証は、次のテスト済みアプリケーションにおけるab72285の使用に適用されます**

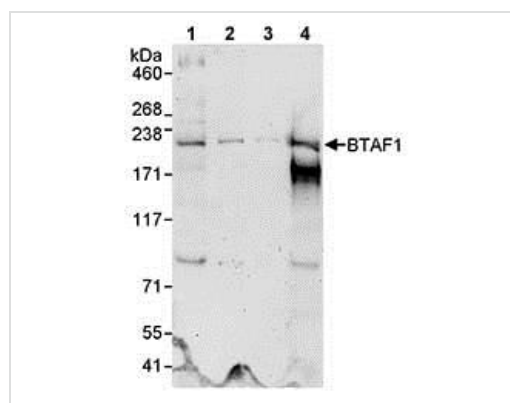
アプリケーションノートには、推奨の開始希釈率がありますが、適切な希釈率につきましてはご検討ください。

アプリケーション	Abreviews	特記事項
WB		1/2000 - 1/10000. Detects a band of approximately 207 kDa (predicted molecular weight: 207 kDa).
IP		Use at 2-5 µg/mg of lysate.

## ターゲット情報

機能	Regulates transcription in association with TATA binding protein (TBP). Removes TBP from the TATA box in an ATP-dependent manner.
配列類似性	Belongs to the SNF2/RAD54 helicase family. Contains 8 HEAT repeats. Contains 1 helicase ATP-binding domain. Contains 1 helicase C-terminal domain.
細胞内局在	Nucleus.

## 画像



Western blot - Anti-BTAF1 antibody (ab72285)

**All lanes :** Anti-BTAF1 antibody (ab72285) at 0.1 µg/ml

**Lane 1 :** HeLa whole cell lysate at 50 µg

**Lane 2 :** HeLa whole cell lysate at 15 µg

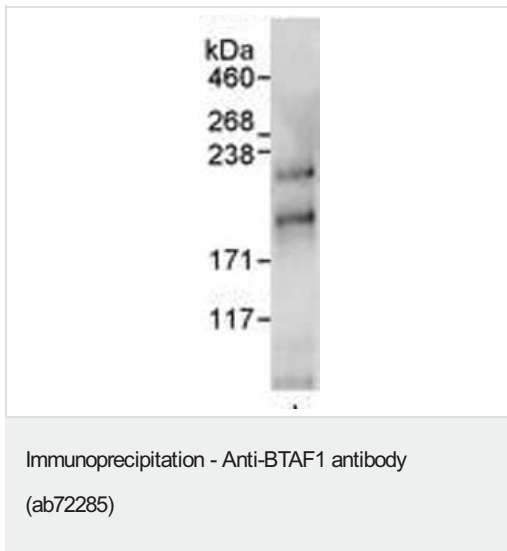
**Lane 3 :** HeLa whole cell lysate at 5 µg

**Lane 4 :** 293T whole cell lysate at 50 µg

**Predicted band size:** 207 kDa

**Observed band size:** 207 kDa

**Additional bands at:** 170 kDa, 85 kDa. We are unsure as to the identity of these extra bands.



Detection of Human BTAF1 by Immunoprecipitation in HeLa whole cell lysate (1 mg for IP, 20% of IP loaded) using ab72285 at 3µg/mg lysate for IP and at 1µg/ml for subsequent WB.

**Please note:** All products are "FOR RESEARCH USE ONLY. NOT FOR USE IN DIAGNOSTIC PROCEDURES"

### Our Abpromise to you: Quality guaranteed and expert technical support

---

- Replacement or refund for products not performing as stated on the datasheet
- Valid for 12 months from date of delivery
- Response to your inquiry within 24 hours
- We provide support in Chinese, English, French, German, Japanese and Spanish
- Extensive multi-media technical resources to help you
- We investigate all quality concerns to ensure our products perform to the highest standards

If the product does not perform as described on this datasheet, we will offer a refund or replacement. For full details of the Abpromise, please visit <https://www.abcam.co.jp/abpromise> or contact our technical team.

### Terms and conditions

---

- Guarantee only valid for products bought direct from Abcam or one of our authorized distributors