


Anti-BRI3 antibody ab101389

★★★★★ 3 Abbreviations 2 References 画像数 2

医薬用外劇物

製品の概要

製品名	Anti-BRI3 antibody
製品の詳細	Rabbit polyclonal to BRI3
由来種	Rabbit
アプリケーション	適用あり: WB, IHC-P
種交差性	交差種: Human 交差が予測される動物種: Mouse, Cow, Pig 
免疫原	Recombinant fragment corresponding to Human BRI3 aa 110-258.
ポジティブ・コントロール	HeLa, HepG2, MCF7 cell lines.
特記事項	<p>The Life Science industry has been in the grips of a reproducibility crisis for a number of years. Abcam is leading the way in addressing this with our range of recombinant monoclonal antibodies and knockout edited cell lines for gold-standard validation. Please check that this product meets your needs before purchasing.</p> <p>If you have any questions, special requirements or concerns, please send us an inquiry and/or contact our Support team ahead of purchase. Recommended alternatives for this product can be found below, along with publications, customer reviews and Q&As</p>

製品の特性

製品の状態	Liquid
保存方法	Shipped at 4°C. Upon delivery aliquot and store at -20°C or -80°C. Avoid repeated freeze / thaw cycles.
バッファー	pH: 7.00 Preservative: 0.01% Thimerosal (merthiolate) Constituents: 1.21% Tris, 0.75% Glycine, 20% Glycerol (glycerin, glycerine)
精製度	Immunogen affinity purified
ポリ/モノ	ポリクローナル
アイソタイプ	IgG

アプリケーション

The Abpromise guarantee

Abpromise保証は、次のテスト済みアプリケーションにおけるab101389の使用に適用されます

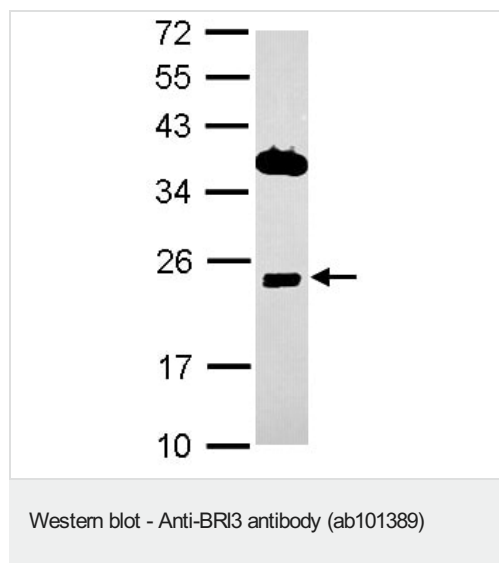
アプリケーションノートには、推奨の開始希釈率がありますが、適切な希釈率につきましてはご確認ください。

アプリケーション	Abreviews	特記事項
WB	★★★★★ (1)	1/500 - 1/3000. Predicted molecular weight: 30 kDa.
IHC-P		1/100 - 1/500. Perform heat mediated antigen retrieval before commencing with IHC staining protocol. Use 10mM Citrate buffer or Tris-EDTA buffer (PH8.0)

ターゲット情報

機能	Negative regulator of beta amyloid peptide production. May inhibit the processing of APP by blocking its access to alpha-and beta-secretase. Binding to the beta-secretase-cleaved APP C-terminal fragment is negligible, suggesting that ITM2C is a poor gamma-secretase cleavage inhibitor. May play a role in TNF-induced cell death and neuronal differentiation.
組織特異性	High levels in the brain, specifically in the cerebral cortex, medulla, amygdala, hippocampus, thalamus, caudate nucleus, cerebellum, olfactory lobe and spinal cord. Very low levels in other organs.
配列類似性	Belongs to the ITM2 family. Contains 1 BRICHOS domain.
翻訳後修飾	Type I membrane-bound, as well as soluble, furin has a pre-eminent role in ITM2C proteolytic processing. PCSK7 and PCSK5 may also be involved although to a lesser extent. The soluble form of PCSK7 is incapable of processing ITM2C.
細胞内局在	Lysosome membrane.

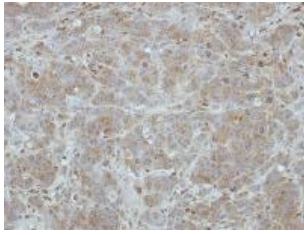
画像



Anti-BRI3 antibody (ab101389) at 1/1000 dilution + HeLa whole cell lysate at 30 µg

Predicted band size: 30 kDa

12% SDS PAGE



Immunohistochemical analysis of paraffin-embedded MCF7 xenograft, using ab101389 at 1/100 dilution.

Immunohistochemistry (Formalin/PFA-fixed paraffin-embedded sections) - Anti-BRI3 antibody (ab101389)

Please note: All products are "FOR RESEARCH USE ONLY. NOT FOR USE IN DIAGNOSTIC PROCEDURES"

Our Abpromise to you: Quality guaranteed and expert technical support

- Replacement or refund for products not performing as stated on the datasheet
- Valid for 12 months from date of delivery
- Response to your inquiry within 24 hours
- We provide support in Chinese, English, French, German, Japanese and Spanish
- Extensive multi-media technical resources to help you
- We investigate all quality concerns to ensure our products perform to the highest standards

If the product does not perform as described on this datasheet, we will offer a refund or replacement. For full details of the Abpromise, please visit <https://www.abcam.co.jp/abpromise> or contact our technical team.

Terms and conditions

- Guarantee only valid for products bought direct from Abcam or one of our authorized distributors