

### Anti-BrdU antibody [MoBu-1] ab8039

**28 References**   **画像数 4**

#### 製品の概要

製品名	Anti-BrdU antibody [MoBu-1]
製品の詳細	Mouse monoclonal [MoBu-1] to BrdU
由来種	Mouse
特異性	This antibody reacts specifically with BrdU incorporated into DNA during S-phase of a cell cycle. It is useful for detecting proliferating cells by flow cytometry or immunofluorescence staining. The reaction shows a clear, nuclear confined speckled pattern. It reacts also specifically with 5-bromouridine (BrU).
アプリケーション	<b>適用あり:</b> IHC-P, ICC/IF, Flow Cyt (Intra)
種交差性	<b>交差種:</b> Species independent
免疫原	Chemical/ Small Molecule corresponding to BrdU.
特記事項	<p>The Life Science industry has been in the grips of a reproducibility crisis for a number of years. Abcam is leading the way in addressing this with our range of recombinant monoclonal antibodies and knockout edited cell lines for gold-standard validation. Please check that this product meets your needs before purchasing.</p> <p>If you have any questions, special requirements or concerns, please send us an inquiry and/or contact our Support team ahead of purchase. Recommended alternatives for this product can be found below, along with publications, customer reviews and Q&amp;As</p>

#### 製品の特性

製品の状態	Liquid
保存方法	Shipped at 4°C. Store at +4°C. Do Not Freeze.
バッファー	<p>pH: 7.40</p> <p>Preservative: 0.097% Sodium azide</p> <p>Constituent: PBS</p>
精製度	Protein A purified
特記事項(精製)	>95 % (by PAGE).
ポリ/モノ	モノクローナル
クローン名	MoBu-1
アイソタイプ	IgG1

## アプリケーション

### The Abpromise guarantee

**Abpromise保証は、** 次のテスト済みアプリケーションにおけるab8039の使用に適用されます

アプリケーションノートには、推奨の開始希釈率がありますが、適切な希釈率につきましてはご検討ください。

アプリケーション	Abreviews	特記事項
IHC-P		Use at an assay dependent concentration.
ICC/IF		Use a concentration of 2 µg/ml.
Flow Cyt (Intra)		Use a concentration of 1 - 2 µg/ml. <b>ab170190</b> - Mouse monoclonal IgG1, is suitable for use as an isotype control with this antibody.

## ターゲット情報

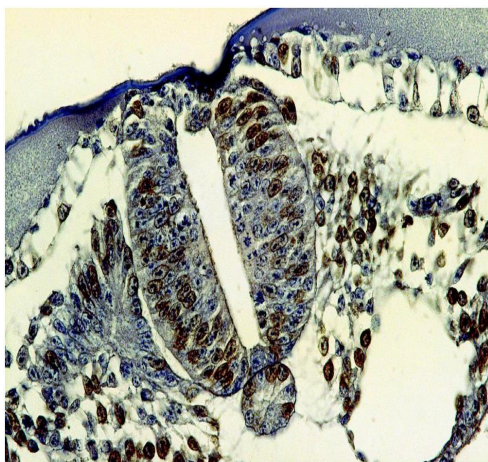
### 関連性

The immunocytochemical detection of bromodeoxyuridine (BrdU) incorporated into DNA is a powerful tool to study the cytokinetics of normal and neoplastic cells. In vitro or in vivo labeling of tumor cells with the thymidine analogue BrdU and the subsequent detection of incorporated BrdU with specific anti-BrdU monoclonal antibodies is an accurate and comprehensive method to quantitate the degree of DNA-synthesis. BrdU is incorporated into the newly synthesized DNA of S-phase cells may provide an estimate for the fraction of cells in S-phase. Also dynamic proliferative information such as the S-phase transit rate and the potential doubling time can be obtained, by means of bivariate BrdU/DNA flow cytometric analysis.

### 細胞内局在

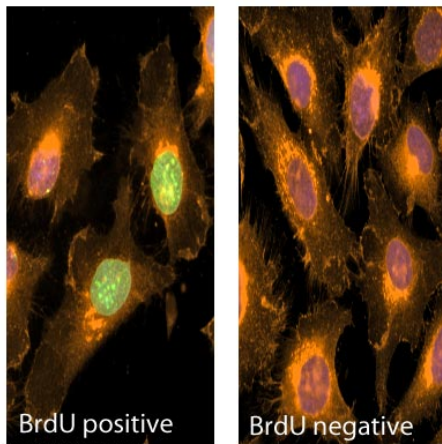
Nuclear

## 画像



Immunohistochemical analysis of paraffin-embedded bromodeoxyuridine-labelled chick embryo cells with (MoBu-1) 5-bromodeoxyuridine

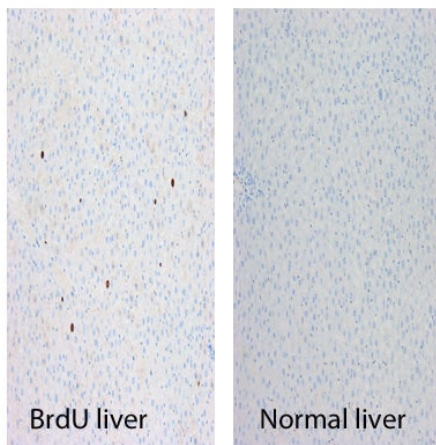
Immunohistochemistry (Formalin/PFA-fixed paraffin-embedded sections) - Anti-BrdU antibody [MoBu-1] (ab8039)



Copyright (c) 2013 Abcam plc

Immunocytochemistry/ Immunofluorescence - Anti-BrdU antibody [MoBu-1] (ab8039)

ICC/IF image of ab8039 stained HeLa cells, both BrdU treated (left image) and normal cells (right image). The cells were 100% methanol fixed (5 min) and then subjected to acid hydrolysis using 2M HCL in 0.1% PBS-Tween for 30 minutes at room temperature to denature the DNA. They were then incubated in 1%BSA / 10% normal goat serum / 0.3M glycine in 0.1% PBS-Tween for 1h to permeabilise the cells and block non-specific protein-protein interactions. The cells were then incubated with the antibody (ab8039, 10µg/ml) overnight at +4°C. The secondary antibody (green) was [ab96879](#), DyLight® 488 goat anti-mouse IgG (H+L) used at a 1/250 dilution for 1h. Alexa Fluor® 594 WGA was used to label plasma membranes (red) at a 1/200 dilution for 1h. DAPI was used to stain the cell nuclei (blue) at a concentration of 1.43µM. Positive staining can be seen in the BrdU treated cells, but not in the normal cells, demonstrating specificity for BrdU.

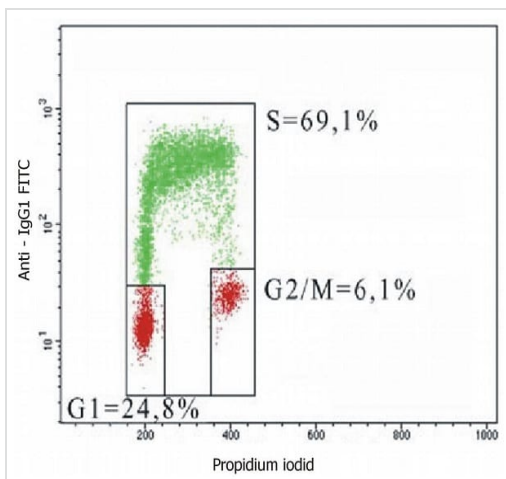


Copyright (c) 2013 Abcam plc

Immunohistochemistry (Formalin/PFA-fixed paraffin-embedded sections) - Anti-BrdU antibody [MoBu-1] (ab8039)

IHC image of ab8039 staining, both in normal and BrdU treated rat liver formalin fixed paraffin embedded tissue sections, performed on a Leica Bond

For other IHC staining systems (automated and non-automated) customers should optimize variable parameters such as antigen retrieval conditions, primary antibody concentration and antibody incubation times.



Intracellular Flow Cytometry analysis of CEM (human acute lymphoblastic leukemia) cells labelling BrdU with ab8039 at 1µg/mL. Goat anti-mouse IgG was used as the secondary antibody. The individual cell cycle phases (S, G1, G2/M-phase) are indicated on the figure.

**Please note:** All products are "FOR RESEARCH USE ONLY. NOT FOR USE IN DIAGNOSTIC PROCEDURES"

### Our Abpromise to you: Quality guaranteed and expert technical support

- Replacement or refund for products not performing as stated on the datasheet
- Valid for 12 months from date of delivery
- Response to your inquiry within 24 hours
- We provide support in Chinese, English, French, German, Japanese and Spanish
- Extensive multi-media technical resources to help you
- We investigate all quality concerns to ensure our products perform to the highest standards

If the product does not perform as described on this datasheet, we will offer a refund or replacement. For full details of the Abpromise, please visit <https://www.abcam.co.jp/abpromise> or contact our technical team.

### Terms and conditions

- Guarantee only valid for products bought direct from Abcam or one of our authorized distributors