

Anti-BrdU antibody [IIB5] ab8955

★★★★★ [3 Abreviews](#) [27 References](#) [画像数 5](#)

製品の概要

製品名	Anti-BrdU antibody [IIB5]
製品の詳細	Mouse monoclonal [IIB5] to BrdU
由来種	Mouse
特異性	This antibody also reacts with bromodeoxyuridine when incorporated into nuclear DNA. It cross reacts with iododeoxyuridine (IdU).
アプリケーション	適用あり: ICC/IF, Flow Cyt, IHC-Fr, IHC-P
種交差性	交差種: Species independent
免疫原	Chemical/ Small Molecule corresponding to BrdU conjugated to bovine serum albumin.
特記事項	<p>The Life Science industry has been in the grips of a reproducibility crisis for a number of years. Abcam is leading the way in addressing this with our range of recombinant monoclonal antibodies and knockout edited cell lines for gold-standard validation. Please check that this product meets your needs before purchasing.</p> <p>If you have any questions, special requirements or concerns, please send us an inquiry and/or contact our Support team ahead of purchase. Recommended alternatives for this product can be found below, along with publications, customer reviews and Q&As</p>

製品の特性

製品の状態	Liquid
保存方法	Shipped at 4°C. Store at +4°C short term (1-2 weeks). Upon delivery aliquot. Store at -20°C or -80°C. Avoid freeze / thaw cycle.
バッファー	Preservative: 0.09% Sodium azide Constituent: PBS
精製度	Protein G purified
ポリ/モノ	モノクローナル
クローン名	IIB5
ミエローマ	Sp2/0-Ag14
アイソタイプ	IgG1

The Abpromise guarantee **Abpromise保証は、** 次のテスト済みアプリケーションにおけるab8955の使用に適用されます
 アプリケーションノートには、推奨の開始希釈率がありますが、適切な希釈率につきましてはご検討ください。

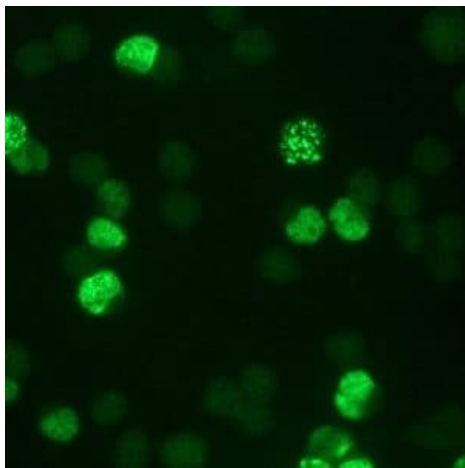
アプリケーション	Abreviews	特記事項
ICC/IF		Use at an assay dependent concentration. Using immunocytochemistry, a combination of this antibody and Mouse monoclonal to Mitotic Cells (ab8956) can distinguish and quantitate the four major fractions of the cell cycle.
Flow Cyt		Use at an assay dependent concentration. ab170190 - Mouse monoclonal IgG1, is suitable for use as an isotype control with this antibody.
IHC-Fr		1/100 - 1/200. ABC method.
IHC-P	★★★★★ (1)	1/100 - 1/200. ABC method.

ターゲット情報

関連性 The immunocytochemical detection of bromodeoxyuridine (BrdU) incorporated into DNA is a powerful tool to study the cytokinetics of normal and neoplastic cells. In vitro or in vivo labeling of tumor cells with the thymidine analogue BrdU and the subsequent detection of incorporated BrdU with specific anti-BrdU monoclonal antibodies is an accurate and comprehensive method to quantitate the degree of DNA-synthesis. BrdU is incorporated into the newly synthesized DNA of S-phase cells may provide an estimate for the fraction of cells in S-phase. Also dynamic proliferative information such as the S-phase transit rate and the potential doubling time can be obtained, by means of bivariate BrdU/DNA flow cytometric analysis.

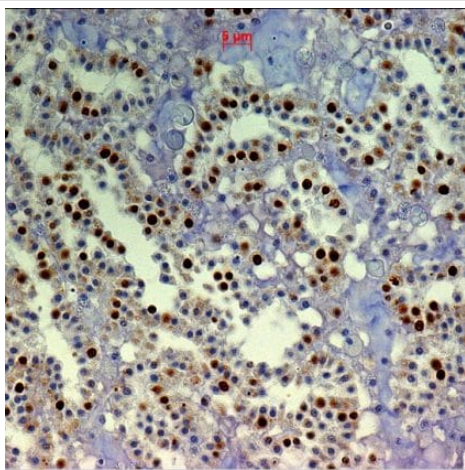
細胞内局在 Nuclear

画像



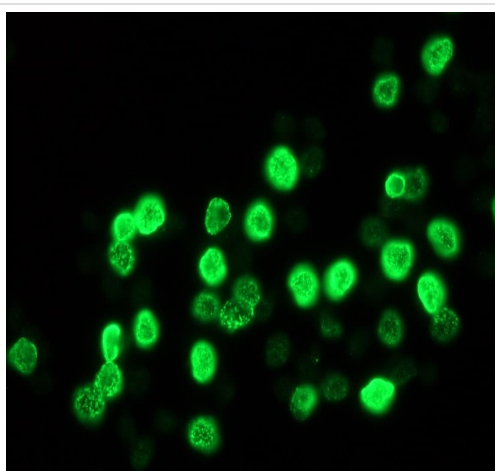
Immunocytochemistry/ Immunofluorescence - Anti-BrdU antibody [IIB5] (ab8955)

Indirect immunofluorescence staining of BrdU-labeled MR65 lung cancer cells with ab8955.



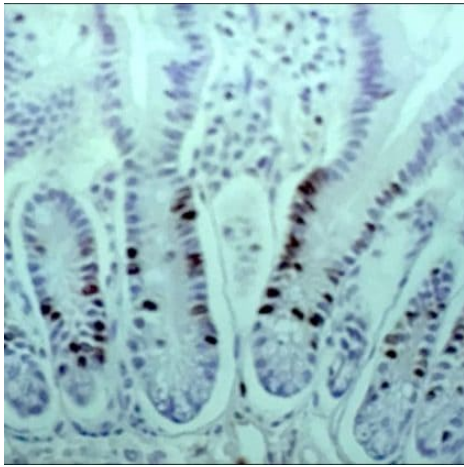
Immunohistochemistry (Formalin/PFA-fixed paraffin-embedded sections) - Anti-BrdU antibody [IIB5] (ab8955)

BrdU staining in sponge *Halisarca caerulea* using ab8955. Metacrylate embedded tissue sections were incubated with 1:200 diluted primary antibody. An avidin-biotin complex kit using biotinylated rabbit anti-mouse antibody and then incubation in avidin-biotin-peroxidase complex was used for detection.



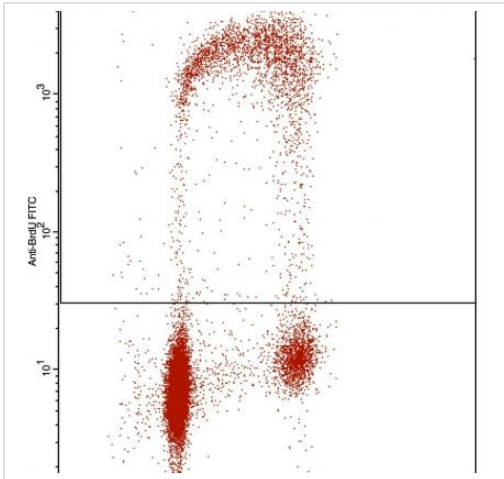
Immunocytochemistry/ Immunofluorescence - Anti-BrdU antibody [IIB5] (ab8955)

Indirect immunofluorescence staining of BrdU-labeled MR65 lung cancer cells using ab8955 (1:1000).



Immunohistochemistry (Formalin/PFA-fixed paraffin-embedded sections) - Anti-BrdU antibody [IIB5] (ab8955)

BrdU staining in paraffin embedded rat intestine using ab8955. Primary antibody diluted 1:200. Peroxidase-conjugated goat anti mouse secondary antibody was used for detection.



Flow Cytometry - Anti-BrdU antibody [IIB5] (ab8955)

Flow cytometric BrdU-DNA cell cycle analysis in a lung cancer cell line. Dilution 1:100 of primary antibody ab8955. FITC-conjugated goat anti mouse secondary antibody was used for detection.

Please note: All products are "FOR RESEARCH USE ONLY. NOT FOR USE IN DIAGNOSTIC PROCEDURES"

Our Abpromise to you: Quality guaranteed and expert technical support

- Replacement or refund for products not performing as stated on the datasheet
- Valid for 12 months from date of delivery
- Response to your inquiry within 24 hours
- We provide support in Chinese, English, French, German, Japanese and Spanish
- Extensive multi-media technical resources to help you
- We investigate all quality concerns to ensure our products perform to the highest standards

If the product does not perform as described on this datasheet, we will offer a refund or replacement. For full details of the Abpromise, please visit <https://www.abcam.co.jp/abpromise> or contact our technical team.

Terms and conditions

- Guarantee only valid for products bought direct from Abcam or one of our authorized distributors