


### Anti-BRD1/BRL antibody ab71877

★★★★☆ [3 Abreviews](#) [2 References](#) [画像数 3](#)

#### 製品の概要

製品名	Anti-BRD1/BRL antibody
製品の詳細	Rabbit polyclonal to BRD1/BRL + Peregrin/BRPF1
由来種	Rabbit
アプリケーション	<b>適用あり:</b> WB, ICC/IF
種交差性	<b>交差種:</b> Human <b>交差が予測される動物種:</b> Mouse, Chicken, Xenopus laevis, Zebrafish 
免疫原	Synthetic peptide. This information is proprietary to Abcam and/or its suppliers.
特記事項	<p>The Life Science industry has been in the grips of a reproducibility crisis for a number of years. Abcam is leading the way in addressing this with our range of recombinant monoclonal antibodies and knockout edited cell lines for gold-standard validation. Please check that this product meets your needs before purchasing.</p> <p>If you have any questions, special requirements or concerns, please send us an inquiry and/or contact our Support team ahead of purchase. Recommended alternatives for this product can be found below, along with publications, customer reviews and Q&amp;As</p>

#### 製品の特性

製品の状態	Liquid
保存方法	Shipped at 4°C. Store at +4°C short term (1-2 weeks). Upon delivery aliquot. Store at -20°C or -80°C. Avoid freeze / thaw cycle.
バッファー	pH: 7.40 Preservative: 0.02% Sodium azide Constituent: PBS  Batches of this product that have a concentration < 1mg/ml may have BSA added as a stabilising agent. If you would like information about the formulation of a specific lot, please contact our scientific support team who will be happy to help.
精製度	Immunogen affinity purified
ポリ/モノ	ポリクローナル
アイソタイプ	IgG

## アプリケーション

**The Abpromise guarantee** **Abpromise保証は、次のテスト済みアプリケーションにおけるab71877の使用に適用されます**  
アプリケーションノートには、推奨の開始希釈率がありますが、適切な希釈率につきましてはご確認ください。

アプリケーション	Abreviews	特記事項
WB	★★★★☆ (2)	
ICC/IF		

### 追加情報

ICC/IF: Use at a concentration of 1 µg/ml.

WB: Use at a concentration of 1 µg/ml. Detects a band of approximately 150 kDa (predicted molecular weight: 137 kDa).

Not yet tested in other applications.

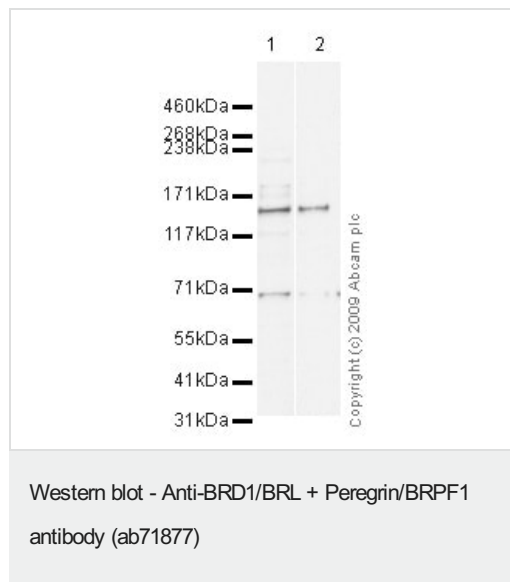
Optimal dilutions/concentrations should be determined by the end user.

## ターゲット情報

### 細胞内局在

BRD1/BRL: Nucleus. Peregrin/BRPF1: Nucleus. Cytoplasm. Localization to the nucleus depends on KAT6A, ING5 and MEAF6.

## 画像



**All lanes** : Anti-BRD1/BRL antibody (ab71877) at 1 µg/ml

**Lane 1** : TE 671 (Human Rhabdomyosarcoma) Whole Cell Lysate

**Lane 2** : Raji whole cell lysate (**ab30124**) at 10 µg

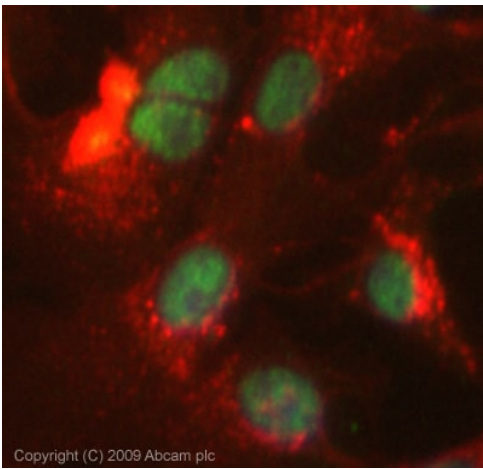
### Secondary

**All lanes** : Goat polyclonal to Rabbit IgG - H&L - Pre-Adsorbed (HRP) at 1/3000 dilution

Performed under reducing conditions.

**Predicted band size:** 137 kDa

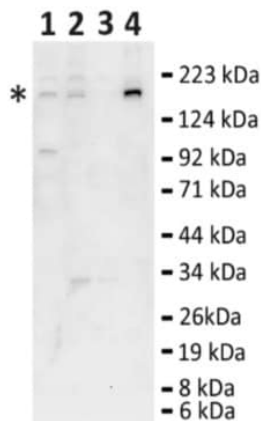
**Observed band size:** 150 kDa



Copyright (C) 2009 Abcam plc

Immunocytochemistry/ Immunofluorescence - Anti-BRD1/BRL + Peregrin/BRPF1 antibody (ab71877)

ICC/IF image of ab71877 stained MCF7 cells. The cells were 100% methanol fixed (5 min) and then incubated in 1%BSA / 10% normal goat serum / 0.3M glycine in 0.1% PBS-Tween for 1h to permeabilise the cells and block non-specific protein-protein interactions. The cells were then incubated with the antibody (ab71877, 1µg/ml) overnight at +4°C. The secondary antibody (green) was Alexa Fluor® 488 goat anti-rabbit IgG (H+L) used at a 1/1000 dilution for 1h. Alexa Fluor® 594 WGA was used to label plasma membranes (red) at a 1/200 dilution for 1h. DAPI was used to stain the cell nuclei (blue) at a concentration of 1.43µM. This antibody also gave a positive result in 100% methanol fixed (5 min) HeLa, Hek293 and HepG2 cells at 1µg/ml.



2010 Abcam

Western blot - Anti-BRD1/BRL + Peregrin/BRPF1 antibody (ab71877)

This image is a courtesy of Antibody Solutions Ltd

**All lanes :** Anti-BRD1/BRL antibody (ab71877) at 1 µg/ml

**Lane 1 :** Lysates prepared from Mouse testis tissue.

**Lane 2 :** Lysates prepared from Mouse Lung tissue.

**Lane 3 :** Lysates prepared from Mouse Kidney tissue.

**Lane 4 :** Lysates prepared from GC-1 cell line.

Lysates/proteins at 20 µg per lane.

#### Secondary

**All lanes :** HRP-conjugated pig polyclonal to rabbit IgG at 1/5000 dilution

Performed under reducing conditions.

**Predicted band size:** 137 kDa

**Observed band size:** 150 kDa

**Additional bands at:** 34 kDa, 92 kDa. We are unsure as to the identity of these extra bands.

**Exposure time:** 7 minutes

GC-1 - mouse spermatogonia cell line

**Please note:** All products are "FOR RESEARCH USE ONLY. NOT FOR USE IN DIAGNOSTIC PROCEDURES"

### **Our Abpromise to you: Quality guaranteed and expert technical support**

---

- Replacement or refund for products not performing as stated on the datasheet
- Valid for 12 months from date of delivery
- Response to your inquiry within 24 hours
  
- We provide support in Chinese, English, French, German, Japanese and Spanish
- Extensive multi-media technical resources to help you
- We investigate all quality concerns to ensure our products perform to the highest standards

If the product does not perform as described on this datasheet, we will offer a refund or replacement. For full details of the Abpromise, please visit <https://www.abcam.co.jp/abpromise> or contact our technical team.

### **Terms and conditions**

---

- Guarantee only valid for products bought direct from Abcam or one of our authorized distributors