

Anti-BRAT1 antibody ab84362

画像数 2

製品の概要

製品名	Anti-BRAT1 antibody
製品の詳細	Rabbit polyclonal to BRAT1
由来種	Rabbit
アプリケーション	適用あり: IHC-P
種交差性	交差種: Human 交差が予測される動物種: Chimpanzee, Rhesus monkey, Gorilla, Orangutan 
免疫原	Synthetic peptide corresponding to Human BRAT1 aa 775-821 (C terminal). Database link: NP_689956.1
ポジティブ・コントロール	Human metastatic lymph node; Human lung non small cell cancer
特記事項	<p>The Life Science industry has been in the grips of a reproducibility crisis for a number of years. Abcam is leading the way in addressing this with our range of recombinant monoclonal antibodies and knockout edited cell lines for gold-standard validation. Please check that this product meets your needs before purchasing.</p> <p>If you have any questions, special requirements or concerns, please send us an inquiry and/or contact our Support team ahead of purchase. Recommended alternatives for this product can be found below, along with publications, customer reviews and Q&As</p>

製品の特性

製品の状態	Liquid
保存方法	Shipped at 4°C. Upon delivery aliquot and store at -20°C. Avoid freeze / thaw cycles.
バッファー	pH: 6.8 Preservative: 0.09% Sodium azide Constituents: 0.1% BSA, Tris buffered saline
精製度	Immunogen affinity purified
特記事項(精製)	Purified using an epitope specific to BRAT1 immobilized on solid support.
ポリ/モノ	ポリクローナル
アイソタイプ	IgG

アプリケーション

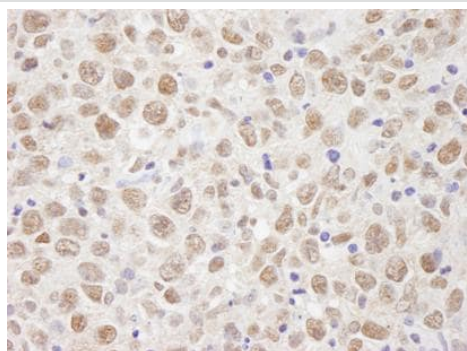
The Abpromise guarantee Abpromise保証は、次のテスト済みアプリケーションにおけるab84362の使用に適用されず
 アプリケーションノートには、推奨の開始希釈率がありますが、適切な希釈率につきましてはご検討ください。

アプリケーション	Abreviews	特記事項
IHC-P		1/100 - 1/500. Epitope exposure is recommended. Epitope exposure with citrate buffer will enhance staining.

ターゲット情報

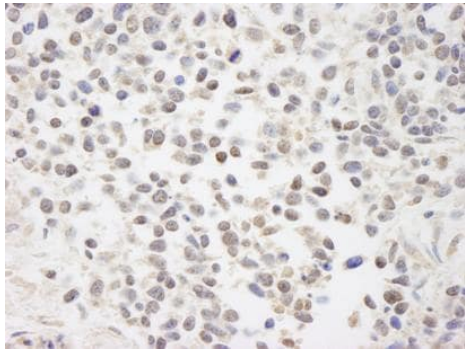
機能	Required for activation of ATM following ionizing radiation. May act by regulating dephosphorylation of ATM.
組織特異性	Ubiquitously expressed.
配列類似性	Contains 2 HEAT repeats.
細胞内局在	Nucleus. Present at double strand breaks (DSBs) following ionizing radiation treatment.

画像



Detection of Human BRAT1 in formalin-fixed paraffin-embedded section of Human metastatic lymph node by Immunohistochemistry using ab84362 at a dilution of 1/250. Detection was performed by DAB staining using anti-Rabbit IHC antibody at a dilution of 1/100.

Immunohistochemistry (Formalin/PFA-fixed paraffin-embedded sections) - Anti-BRAT1 antibody (ab84362)



Immunohistochemistry (Formalin/PFA-fixed paraffin-embedded sections) - Anti-BRAT1 antibody (ab84362)

Detection of Human BRAT1 in formalin-fixed paraffin-embedded section of Human lung non-small cell cancer by Immunohistochemistry using ab84362 at a dilution of 1/250. Detection was performed by DAB staining using anti-Rabbit IHC antibody at a dilution of 1/100.

Please note: All products are "FOR RESEARCH USE ONLY. NOT FOR USE IN DIAGNOSTIC PROCEDURES"

Our Abpromise to you: Quality guaranteed and expert technical support

- Replacement or refund for products not performing as stated on the datasheet
- Valid for 12 months from date of delivery
- Response to your inquiry within 24 hours
- We provide support in Chinese, English, French, German, Japanese and Spanish
- Extensive multi-media technical resources to help you
- We investigate all quality concerns to ensure our products perform to the highest standards

If the product does not perform as described on this datasheet, we will offer a refund or replacement. For full details of the Abpromise, please visit <https://www.abcam.co.jp/abpromise> or contact our technical team.

Terms and conditions

- Guarantee only valid for products bought direct from Abcam or one of our authorized distributors