


Anti-BRAF antibody ab85972

2 References **画像数 3**

製品の概要

製品名	Anti-BRAF antibody
製品の詳細	Rabbit polyclonal to BRAF
由来種	Rabbit
アプリケーション	適用あり: WB, IP, IHC-P
種交差性	交差種: Human 交差が予測される動物種: Mouse, Rat, Cow, Dog, Chimpanzee, Gorilla 
免疫原	Synthetic peptide corresponding to Human BRAF aa 25-75.
特記事項	<p>The Life Science industry has been in the grips of a reproducibility crisis for a number of years. Abcam is leading the way in addressing this with our range of recombinant monoclonal antibodies and knockout edited cell lines for gold-standard validation. Please check that this product meets your needs before purchasing.</p> <p>If you have any questions, special requirements or concerns, please send us an inquiry and/or contact our Support team ahead of purchase. Recommended alternatives for this product can be found below, along with publications, customer reviews and Q&As</p>

製品の特性

製品の状態	Liquid
保存方法	Shipped at 4°C. Upon delivery aliquot and store at -20°C. Avoid freeze / thaw cycles.
バッファー	pH: 6.8 Preservative: 0.09% Sodium azide Constituents: Tris buffered saline, 0.1% BSA
精製度	Immunogen affinity purified
特記事項 (精製)	ab85972 was affinity purified using an epitope specific to B Raf immobilized on solid support.
ポリ/モノ	ポリクローナル
アイソタイプ	IgG

アプリケーション

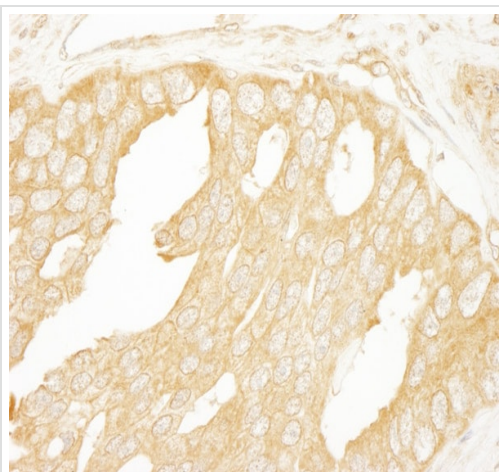
The Abpromise guarantee **Abpromise保証は、** 次のテスト済みアプリケーションにおけるab85972の使用に適用されます

アプリケーションノートには、推奨の開始希釈率がありますが、適切な希釈率につきましてはご確認ください。

アプリケーション	Abreviews	特記事項
WB		1/2000 - 1/10000. Predicted molecular weight: 85 kDa.
IP		Use at 2-5 µg/mg of lysate.
IHC-P		1/200 - 1/1000. Perform heat mediated antigen retrieval with citrate buffer pH 6 before commencing with IHC staining protocol.

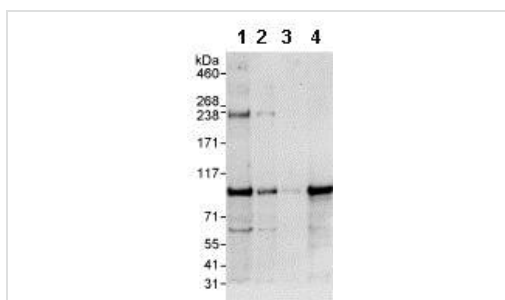
ターゲット情報

機能	Involved in the transduction of mitogenic signals from the cell membrane to the nucleus. May play a role in the postsynaptic responses of hippocampal neuron.
組織特異性	Brain and testis.
関連疾患	<p>Note=Defects in BRAF are found in a wide range of cancers.</p> <p>Defects in BRAF may be a cause of colorectal cancer (CRC) [MIM:114500].</p> <p>Defects in BRAF are involved in lung cancer (LNCr) [MIM:211980].</p> <p>Defects in BRAF are involved in non-Hodgkin lymphoma (NHL) [MIM:605027]. NHL is a cancer that starts in cells of the lymph system, which is part of the body's immune system. NHLs can occur at any age and are often marked by enlarged lymph nodes, fever and weight loss.</p> <p>Defects in BRAF are a cause of cardiofaciocutaneous syndrome (CFC syndrome) [MIM:115150]; also known as cardio-facio-cutaneous syndrome. CFC syndrome is characterized by a distinctive facial appearance, heart defects and mental retardation. Heart defects include pulmonic stenosis, atrial septal defects and hypertrophic cardiomyopathy. Some affected individuals present with ectodermal abnormalities such as sparse, friable hair, hyperkeratotic skin lesions and a generalized ichthyosis-like condition. Typical facial features are similar to Noonan syndrome. They include high forehead with bitemporal constriction, hypoplastic supraorbital ridges, downslanting palpebral fissures, a depressed nasal bridge, and posteriorly angulated ears with prominent helices. The inheritance of CFC syndrome is autosomal dominant.</p> <p>Defects in BRAF are the cause of Noonan syndrome type 7 (NS7) [MIM:613706]. Noonan syndrome is a disorder characterized by facial dysmorphic features such as hypertelorism, a downward eyeslant and low-set posteriorly rotated ears. Other features can include short stature, a short neck with webbing or redundancy of skin, cardiac anomalies, deafness, motor delay and variable intellectual deficits.</p> <p>Defects in BRAF are the cause of LEOPARD syndrome type 3 (LEOPARD3) [MIM:613707]. LEOPARD3 is a disorder characterized by lentigines, electrocardiographic conduction abnormalities, ocular hypertelorism, pulmonic stenosis, abnormalities of genitalia, retardation of growth, and sensorineural deafness.</p> <p>Note=A chromosomal aberration involving BRAF is found in pilocytic astrocytomas. A tandem duplication of 2 Mb at 7q34 leads to the expression of a KIAA1549-BRAF fusion protein with a constitutive kinase activity and inducing cell transformation.</p>
配列類似性	<p>Belongs to the protein kinase superfamily. TKL Ser/Thr protein kinase family. RAF subfamily.</p> <p>Contains 1 phorbol-ester/DAG-type zinc finger.</p> <p>Contains 1 protein kinase domain.</p> <p>Contains 1 RBD (Ras-binding) domain.</p>
細胞内局在	Nucleus. Cytoplasm. Cell membrane. Colocalizes with RGS14 and RAF1 in both the cytoplasm and membranes.



Immunohistochemistry (Formalin/PFA-fixed paraffin-embedded sections) - Anti-BRAF antibody (ab85972)

Immunohistochemistry (Formalin/PFA-fixed paraffin-embedded sections) analysis of human prostate carcinoma tissue labelling BRAF with ab85972 at 1/200 (1 µg/ml). Detection: DAB.



Western blot - Anti-BRAF antibody (ab85972)

All lanes : Anti-BRAF antibody (ab85972) at 0.04 µg/ml

Lane 1 : HeLa whole cell lysate

at 50 µg

Lane 2 : HeLa whole cell lysate

at 15 µg

Lane 3 : HeLa whole cell lysate

at 5 µg

Lane 4 : 293T whole cell lysate

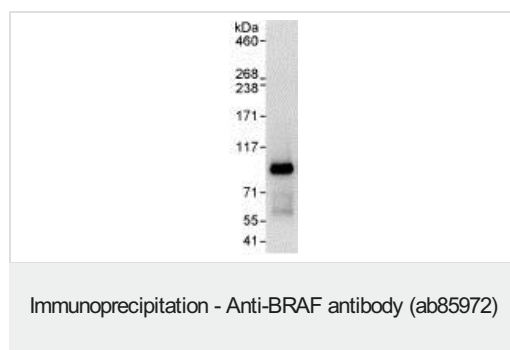
at 50 µg

Predicted band size: 85 kDa

Observed band size: 95 kDa

Additional bands at: 238 kDa, 60 kDa. We are unsure as to the identity of these extra bands.

Exposure time: 3 minutes



Detection of B Raf by Western Blot of Immunoprecipitate.
ab85972 at 1µg/ml staining B Raf in HeLa whole cell lysate
immunoprecipitated using ab85972 at 3µg/mg lysate (1 mg/IP; 20%
of IP loaded/lane). Detection: Chemiluminescence with exposure
time of 10 seconds.

Please note: All products are "FOR RESEARCH USE ONLY. NOT FOR USE IN DIAGNOSTIC PROCEDURES"

Our Abpromise to you: Quality guaranteed and expert technical support

- Replacement or refund for products not performing as stated on the datasheet
- Valid for 12 months from date of delivery
- Response to your inquiry within 24 hours
- We provide support in Chinese, English, French, German, Japanese and Spanish
- Extensive multi-media technical resources to help you
- We investigate all quality concerns to ensure our products perform to the highest standards

If the product does not perform as described on this datasheet, we will offer a refund or replacement. For full details of the Abpromise, please visit <https://www.abcam.co.jp/abpromise> or contact our technical team.

Terms and conditions

- Guarantee only valid for products bought direct from Abcam or one of our authorized distributors