

Anti-Bovine Papilloma Virus E2 antibody [1H10] ab77174

[2 References](#) [画像数 1](#)

製品の概要

製品名	Anti-Bovine Papilloma Virus E2 antibody [1H10]
製品の詳細	Mouse monoclonal [1H10] to Bovine Papilloma Virus E2
由来種	Mouse
アプリケーション	適用あり: WB, ICC/IF
種交差性	交差種: Bovine papillomavirus
免疫原	Recombinant full length Bovine Papillomavirus E2-protein expressed in E Coli.
エピトープ	Mapped to amino acids 208-218 (RPDGVWVASEG)
特記事項	<p>The Life Science industry has been in the grips of a reproducibility crisis for a number of years. Abcam is leading the way in addressing this with our range of recombinant monoclonal antibodies and knockout edited cell lines for gold-standard validation. Please check that this product meets your needs before purchasing.</p> <p>If you have any questions, special requirements or concerns, please send us an inquiry and/or contact our Support team ahead of purchase. Recommended alternatives for this product can be found below, along with publications, customer reviews and Q&As</p>

製品の特性

製品の状態	Liquid
保存方法	Shipped at 4°C. Upon delivery aliquot and store at -20°C or -80°C. Avoid repeated freeze / thaw cycles.
バッファー	pH: 7.4 Constituents: 50% Glycerol (glycerin, glycerine), PBS
精製度	Protein A purified
ポリ/モノ	モノクローナル
クローン名	1H10
アイソタイプ	IgG

アプリケーション

The Abpromise guarantee

Abpromise保証は、次のテスト済みアプリケーションにおけるab77174の使用に適用されます

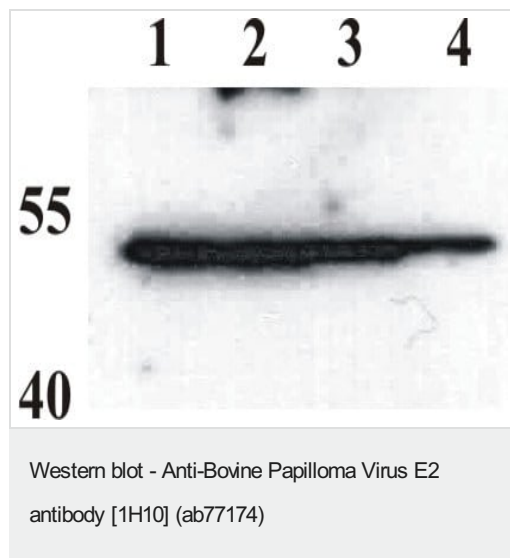
アプリケーションノートには、推奨の開始希釈率がありますが、適切な希釈率につきましてはご確認ください。

アプリケーション	Abreviews	特記事項
WB		Use a concentration of 0.2 - 1 µg/ml. Predicted molecular weight: 45 kDa. WB: 1/1000 - 1/5000 for 1 hour at RT, in TBST with 2% non-fat dry milk.
ICC/IF		Use a concentration of 1 µg/ml. 1/1000 for 1 hour at RT, in PBS with 1% BSA.

ターゲット情報

関連性	The bovine papilloma virus E2 protein is the master regulator of papillomavirus replication and transcription. Binds to the E2RE response element (5'-ACCNNNNNNGGT-3') present in multiple copies in the regulatory region. Can either activate or repress transcription depending on E2RE's position with regards to proximal promoter elements. Repression occurs by sterically hindering the assembly of the transcription initiation complex. The E1-E2 complex binds to the origin of DNA replication.
細胞内局在	Host cell nucleus

画像



All lanes : Anti-Bovine Papilloma Virus E2 antibody [1H10] (ab77174)

Lane 1 : Recombinant purified Bovine Papillomavirus E2 protein at 10000 µg

Lane 2 : Recombinant purified Bovine Papillomavirus E2 protein at 5000 µg

Lane 3 : Recombinant purified Bovine Papillomavirus E2 protein at 1000 µg

Lane 4 : Recombinant purified Bovine Papillomavirus E2 protein at 500 µg

Predicted band size: 45 kDa

Please note: All products are "FOR RESEARCH USE ONLY. NOT FOR USE IN DIAGNOSTIC PROCEDURES"

Our Abpromise to you: Quality guaranteed and expert technical support

- Replacement or refund for products not performing as stated on the datasheet

- Valid for 12 months from date of delivery
- Response to your inquiry within 24 hours

- We provide support in Chinese, English, French, German, Japanese and Spanish
- Extensive multi-media technical resources to help you
- We investigate all quality concerns to ensure our products perform to the highest standards

If the product does not perform as described on this datasheet, we will offer a refund or replacement. For full details of the Abpromise, please visit <https://www.abcam.co.jp/abpromise> or contact our technical team.

Terms and conditions

- Guarantee only valid for products bought direct from Abcam or one of our authorized distributors