


Anti-BOP1 antibody ab86652

2 References [画像数 2](#)

製品の概要

製品名	Anti-BOP1 antibody
製品の詳細	Rabbit polyclonal to BOP1
由来種	Rabbit
アプリケーション	適用あり: IP, IHC-P
種交差性	交差種: Mouse, Human 交差が予測される動物種: Rat, Horse, Guinea pig, Cow, Pig, Rhesus monkey, Gorilla, Chinese hamster, Bat 
免疫原	Synthetic peptide corresponding to Human BOP1 aa 350-450. Database link: Q14137
特記事項	<p>The Life Science industry has been in the grips of a reproducibility crisis for a number of years. Abcam is leading the way in addressing this with our range of recombinant monoclonal antibodies and knockout edited cell lines for gold-standard validation. Please check that this product meets your needs before purchasing.</p> <p>If you have any questions, special requirements or concerns, please send us an inquiry and/or contact our Support team ahead of purchase. Recommended alternatives for this product can be found below, along with publications, customer reviews and Q&As</p>

製品の特性

製品の状態	Liquid
保存方法	Shipped at 4°C. Upon delivery aliquot and store at -20°C. Avoid freeze / thaw cycles.
バッファー	pH: 6.8 Preservative: 0.09% Sodium azide Constituents: 0.1% BSA, Tris buffered saline
精製度	Immunogen affinity purified
ポリ/モノ	ポリクローナル
アイソタイプ	IgG

アプリケーション

The Abpromise guarantee

Abpromise保証は、次のテスト済みアプリケーションにおけるab86652の使用に適用されます

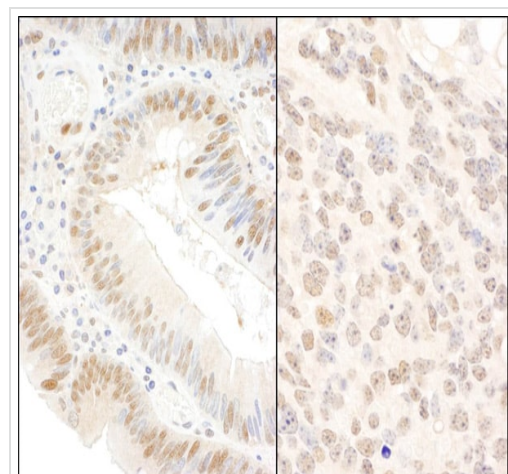
アプリケーションノートには、推奨の開始希釈率がありますが、適切な希釈率につきましてはご検討ください。

アプリケーション	Abreviews	特記事項
IP		Use at 2-5 µg/mg of lysate.
IHC-P		1/200 - 1/500. Perform heat mediated antigen retrieval with citrate buffer pH 6 before commencing with IHC staining protocol.

ターゲット情報

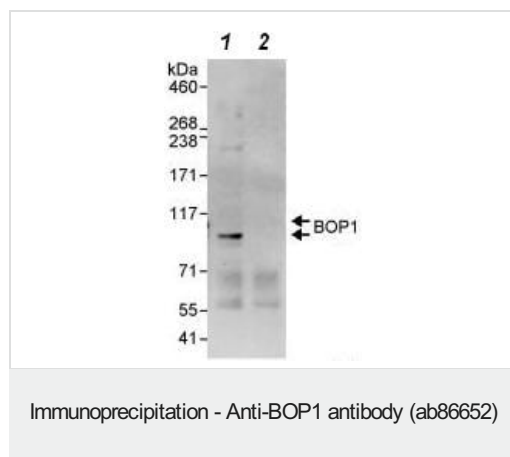
機能	Component of the PeBoW complex, which is required for maturation of 28S and 5.8S ribosomal RNAs and formation of the 60S ribosome.
配列類似性	Belongs to the WD repeat BOP1/ERB1 family. Contains 7 WD repeats.
細胞内局在	Nucleus > nucleolus. Nucleus > nucleoplasm.

画像



Immunohistochemistry (Formalin/PFA-fixed paraffin-embedded sections) analysis of human colon carcinoma (left) and mouse teratoma tissues labelling BOP1 with ab86652 at 1/200 (1 µg/ml).
Detection: DAB.

Immunohistochemistry (Formalin/PFA-fixed paraffin-embedded sections) - Anti-BOP1 antibody (ab86652)



Western Blot detection of BOP1 in Immunoprecipitates of HeLa whole cell lysate (1 mg for IP, 20% of IP loaded) using ab86652 at 3 µg/mg lysate; Lane 2 represents control IgG IP. For the WB, **ab86653** was used at 0.4 µg/ml.

Detection: Chemiluminescence with exposure time of 90 seconds.

All lanes : Anti-BOP1 antibody (ab86652) at 0.4 µg/ml

Lane 1 : immunoprecipitated BOP1

Lane 2 : control IgG

Observed band size: 101 kDa

Additional bands at: 200 kDa, 55 kDa, 60-71 kDa. We are unsure as to the identity of these extra bands.

Please note: All products are "FOR RESEARCH USE ONLY. NOT FOR USE IN DIAGNOSTIC PROCEDURES"

Our Abpromise to you: Quality guaranteed and expert technical support

- Replacement or refund for products not performing as stated on the datasheet
- Valid for 12 months from date of delivery
- Response to your inquiry within 24 hours
- We provide support in Chinese, English, French, German, Japanese and Spanish
- Extensive multi-media technical resources to help you
- We investigate all quality concerns to ensure our products perform to the highest standards

If the product does not perform as described on this datasheet, we will offer a refund or replacement. For full details of the Abpromise, please visit <https://www.abcam.co.jp/abpromise> or contact our technical team.

Terms and conditions

- Guarantee only valid for products bought direct from Abcam or one of our authorized distributors