

Anti-Bone marrow stromal cell antigen 1 antibody [SY11B5] ab92395

1 [References](#) **2** [画像数](#)

製品の概要

製品名	Anti-Bone marrow stromal cell antigen 1 antibody [SY11B5]
製品の詳細	Mouse monoclonal [SY11B5] to Bone marrow stromal cell antigen 1
由来種	Mouse
アプリケーション	適用あり: Flow Cyt
種交差性	交差種: Human
免疫原	Full length native protein (purified) corresponding to Bone marrow stromal cell antigen 1.
ポジティブ・コントロール	Normal Human peripheral blood cells
特記事項	<p>The Life Science industry has been in the grips of a reproducibility crisis for a number of years. Abcam is leading the way in addressing this with our range of recombinant monoclonal antibodies and knockout edited cell lines for gold-standard validation. Please check that this product meets your needs before purchasing.</p> <p>If you have any questions, special requirements or concerns, please send us an inquiry and/or contact our Support team ahead of purchase. Recommended alternatives for this product can be found below, along with publications, customer reviews and Q&As</p>

製品の特性

製品の状態	Liquid
保存方法	Shipped at 4°C. Store at +4°C short term (1-2 weeks). Store at -20°C or -80°C. Avoid freeze / thaw cycle.
バッファー	<p>pH: 7.20</p> <p>Preservative: 0.09% Sodium azide</p> <p>Constituents: PBS, 0.87% Sodium chloride</p>
精製度	Protein G purified
ポリ/モノ	モノクローナル
クローン名	SY11B5
アイソタイプ	IgG1

アプリケーション

The Abpromise guarantee Abpromise保証は、次のテスト済みアプリケーションにおけるab92395の使用に適用されます
アプリケーションノートには、推奨の開始希釈率がありますが、適切な希釈率につきましてはご検討ください。

アプリケーション	Abreviews	特記事項
Flow Cyt		

追加情報

Flow Cyt: Use 0.5µg for 10⁶ cells.

Not yet tested in other applications.

Optimal dilutions/concentrations should be determined by the end user.

ターゲット情報

機能

Synthesizes the second messengers cyclic ADP-ribose and nicotinate-adenine dinucleotide phosphate, the former a second messenger that elicits calcium release from intracellular stores. May be involved in pre-B-cell growth.

組織特異性

Widely expressed.

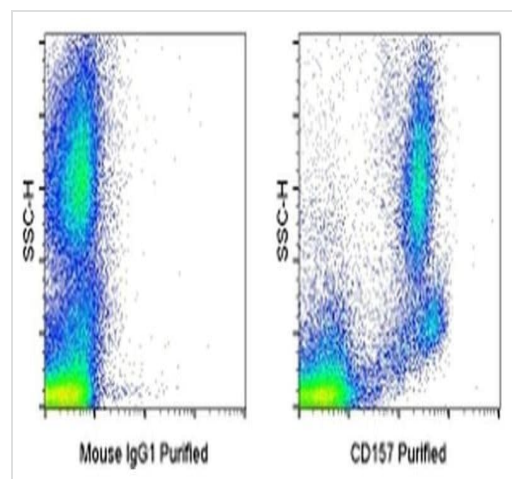
配列類似性

Belongs to the ADP-ribosyl cyclase family.

細胞内局在

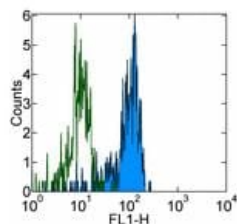
Cell membrane.

画像



Flow cytometry analysis labelling normal human peripheral blood cells with Mouse IgG1 K Isotype Control Purified (left) or ab92395 (right) at 0.25 µg, followed by F(ab')₂ Anti-Mouse IgG PE.

Flow Cytometry - Anti-Bone marrow stromal cell antigen 1 antibody [SY11B5] (ab92395)



Flow Cytometry - Anti-Bone marrow stromal cell
antigen 1 antibody [SY11B5] (ab92395)

Staining of normal human peripheral blood cells with ab92395 at 0.25 μ g (blue histogram), or purified Mouse IgG1k, isotype control at 0.25 μ g (green histogram), followed by treatment with FITC anti-mouse IgG. Cells in the monocyte gate were used for analysis.

Please note: All products are "FOR RESEARCH USE ONLY. NOT FOR USE IN DIAGNOSTIC PROCEDURES"

Our Abpromise to you: Quality guaranteed and expert technical support

- Replacement or refund for products not performing as stated on the datasheet
- Valid for 12 months from date of delivery
- Response to your inquiry within 24 hours
- We provide support in Chinese, English, French, German, Japanese and Spanish
- Extensive multi-media technical resources to help you
- We investigate all quality concerns to ensure our products perform to the highest standards

If the product does not perform as described on this datasheet, we will offer a refund or replacement. For full details of the Abpromise, please visit <https://www.abcam.co.jp/abpromise> or contact our technical team.

Terms and conditions

- Guarantee only valid for products bought direct from Abcam or one of our authorized distributors