

Anti-BOD1L antibody ab122380

★★★★★ [1 Abreviews](#) [画像数 2](#)

製品の概要

製品名	Anti-BOD1L antibody
製品の詳細	Rabbit polyclonal to BOD1L
由来種	Rabbit
アプリケーション	適用あり: ICC/IF, IHC-P
種交差性	交差種: Human
免疫原	antigen: PQVEKAVHEF LATLNHKEEG SGNTAPDDEK PDTSLITQGV PTPGPSANVA NDAMSILETI TSLNQEASAA RASTETSNAK TSE, corresponding to amino acids 149-231 of Human BOD1L according to Q8NFC6.

[Run BLAST with ExPASy](#) [Run BLAST with NCBI](#)

ポジティブ・コントロール Human placenta tissue.

特記事項

The Life Science industry has been in the grips of a reproducibility crisis for a number of years. Abcam is leading the way in addressing this with our range of recombinant monoclonal antibodies and knockout edited cell lines for gold-standard validation. Please check that this product meets your needs before purchasing.

If you have any questions, special requirements or concerns, please send us an inquiry and/or contact our Support team ahead of purchase. Recommended alternatives for this product can be found below, along with publications, customer reviews and Q&As

製品の特性

製品の状態	Liquid
保存方法	Shipped at 4°C. Upon delivery aliquot and store at -20°C. Avoid freeze / thaw cycles.
バッファー	pH: 7.20 Preservative: 0.02% Sodium azide Constituents: 59% PBS, 40% Glycerol (glycerin, glycerine)
精製度	Immunogen affinity purified
ポリ/モノ	ポリクローナル
アイソタイプ	IgG

アプリケーション

The Abpromise guarantee

Abpromise保証は、次のテスト済みアプリケーションにおけるab122380の使用に適用されます

アプリケーションノートには、推奨の開始希釈率がありますが、適切な希釈率につきましてはご検討ください。

アプリケーション	Abreviews	特記事項
ICC/IF	★★★★★ (1)	Use a concentration of 0.25 - 2 µg/ml.
IHC-P		1/10 - 1/20. Perform heat mediated antigen retrieval with citrate buffer pH 6 before commencing with IHC staining protocol.

ターゲット情報

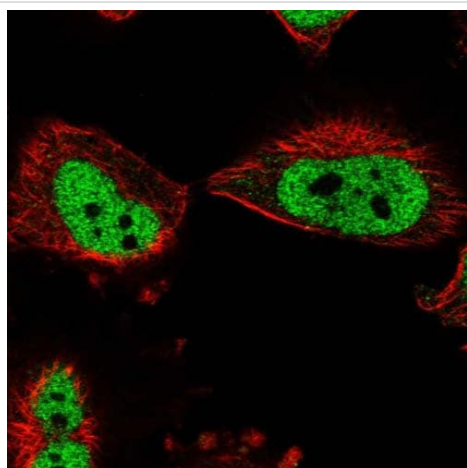
配列類似性

Belongs to the BOD1 family.
Contains 1 A.T hook DNA-binding domain.

翻訳後修飾

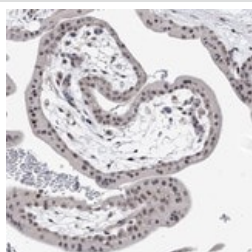
Phosphorylated upon DNA damage, probably by ATM or ATR.

画像



Immunocytochemistry/ Immunofluorescence - Anti-BOD1L antibody (ab122380)

Immunofluorescent staining of Human cell line U-251 MG shows positivity in nucleus but not nucleoli. Recommended concentration of ab122380 1-4 µg/ml. Cells treated with PFA/Triton X-100.



Immunohistochemistry (Formalin/PFA-fixed paraffin-embedded sections) - Anti-BOD1L antibody (ab122380)

ab122380 at 1/15 dilution staining BOD1L in paraffin-embedded Human placenta tissue by Immunohistochemistry.

Please note: All products are "FOR RESEARCH USE ONLY. NOT FOR USE IN DIAGNOSTIC PROCEDURES"

Our Abpromise to you: Quality guaranteed and expert technical support

- Replacement or refund for products not performing as stated on the datasheet
- Valid for 12 months from date of delivery
- Response to your inquiry within 24 hours

- We provide support in Chinese, English, French, German, Japanese and Spanish
- Extensive multi-media technical resources to help you
- We investigate all quality concerns to ensure our products perform to the highest standards

If the product does not perform as described on this datasheet, we will offer a refund or replacement. For full details of the Abpromise, please visit <https://www.abcam.co.jp/abpromise> or contact our technical team.

Terms and conditions

- Guarantee only valid for products bought direct from Abcam or one of our authorized distributors