


Anti-BMX antibody [Y396] ab32153

リコンビナント **RabMAb**

3 References [画像数 1](#)

製品の概要

製品名	Anti-BMX antibody [Y396]
製品の詳細	Rabbit monoclonal [Y396] to BMX
由来種	Rabbit
アプリケーション	適用あり: WB 適用なし: Flow Cyt or ICC/IF
種交差性	交差種: Human 交差が予測される動物種: Mouse, Rat 
免疫原	Synthetic peptide within Human BMX aa 50-150. The exact sequence is proprietary.
ポジティブ・コントロール	HeLa whole cell lysate (ab150035).
特記事項	Our RabMAb [®] technology is a patented hybridoma-based technology for making rabbit monoclonal antibodies. For details on our patents, please refer to RabMAb[®] patents . The Life Science industry has been in the grips of a reproducibility crisis for a number of years. Abcam is leading the way in addressing this with our range of recombinant monoclonal antibodies and knockout edited cell lines for gold-standard validation. Please check that this product meets your needs before purchasing. If you have any questions, special requirements or concerns, please send us an inquiry and/or contact our Support team ahead of purchase. Recommended alternatives for this product can be found below, along with publications, customer reviews and Q&As

製品の特性

製品の状態	Liquid
保存方法	Shipped at 4°C. Upon delivery aliquot and store at -20°C. Avoid freeze / thaw cycles.
バッファー	pH: 7.20 Preservative: 0.01% Sodium azide Constituents: 49% PBS, 50% Glycerol (glycerin, glycerine), 0.05% BSA
精製度	Protein A purified
ポリ/モノ	モノクローナル
クローン名	Y396

アプリケーション

The Abpromise guarantee

Abpromise保証は、次のテスト済みアプリケーションにおけるab32153の使用に適用されます

アプリケーションノートには、推奨の開始希釈率がありますが、適切な希釈率につきましてはご検討ください。

アプリケーション	Abreviews	特記事項
WB		1/1000 - 1/2000. Detects a band of approximately 75 kDa (predicted molecular weight: 78 kDa).

追加情報

Is unsuitable for Flow Cyt or ICC/IF.

ターゲット情報

機能

Activity is required for interleukin 6 (IL-6) induced differentiation. May play a role in the growth and differentiation of hematopoietic cells. May be involved in signal transduction in endocardial and arterial endothelial cells.

組織特異性

Preferentially expressed in epithelial and endothelial cells.

配列類似性

Belongs to the protein kinase superfamily. Tyr protein kinase family. TEC subfamily.
Contains 1 Btk-type zinc finger.
Contains 1 PH domain.
Contains 1 protein kinase domain.
Contains 1 SH2 domain.

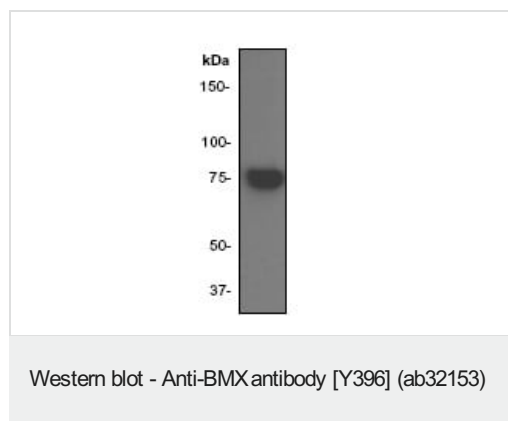
ドメイン

SH2 domain mediates interaction with RUFY1.

細胞内局在

Cytoplasm.

画像



Anti-BMX antibody [Y396] (ab32153) at 1/500 dilution + HeLa cell lysate

Predicted band size: 78 kDa

Observed band size: 75 kDa

Please note: All products are "FOR RESEARCH USE ONLY. NOT FOR USE IN DIAGNOSTIC PROCEDURES"

Our Abpromise to you: Quality guaranteed and expert technical support

-
- Replacement or refund for products not performing as stated on the datasheet
 - Valid for 12 months from date of delivery
 - Response to your inquiry within 24 hours

 - We provide support in Chinese, English, French, German, Japanese and Spanish
 - Extensive multi-media technical resources to help you
 - We investigate all quality concerns to ensure our products perform to the highest standards

If the product does not perform as described on this datasheet, we will offer a refund or replacement. For full details of the Abpromise, please visit <https://www.abcam.co.jp/abpromise> or contact our technical team.

Terms and conditions

- Guarantee only valid for products bought direct from Abcam or one of our authorized distributors