

Anti-bmpA antibody ab106085

画像数 1

製品の概要

製品名	Anti-bmpA antibody
製品の詳細	Rabbit polyclonal to bmpA
由来種	Rabbit
特異性	ab106085 is specific for <i>Borrelia burgdorferi</i> bmpA protein. A BLAST analysis was used to suggest cross-reactivity with bmpA from <i>B. burgdorferi</i> and <i>B. afzelii</i> sources based on 100% homology with the immunizing sequence. Partial reactivity is expected against <i>B. garinii</i> sources based on 88-95% homology and to <i>B. spielmanii</i> A14S based on 86-96% homology.
アプリケーション	適用あり: WB
種交差性	交差種: <i>Borrelia burgdorferi</i>
免疫原	Full length protein corresponding to bmpA. MBP-fusion protein corresponding to <i>Borrelia burgdorferi</i> bmpA protein. Database link: Q45010
ポジティブ・コントロール	MBP-bmpA <i>Borrelia burgdorferi</i> fusion protein.
特記事項	<p>The Life Science industry has been in the grips of a reproducibility crisis for a number of years. Abcam is leading the way in addressing this with our range of recombinant monoclonal antibodies and knockout edited cell lines for gold-standard validation. Please check that this product meets your needs before purchasing.</p> <p>If you have any questions, special requirements or concerns, please send us an inquiry and/or contact our Support team ahead of purchase. Recommended alternatives for this product can be found below, along with publications, customer reviews and Q&As</p>

製品の特性

製品の状態	Liquid
保存方法	Shipped at 4°C. Upon delivery aliquot. Store at -20°C or -80°C. Avoid freeze / thaw cycle.
バッファー	Preservative: 0.01% Sodium azide Constituents: 0.42% Potassium phosphate, 0.88% Sodium chloride
精製度	Protein A purified
特記事項(精製)	ab106085 is cross-adsorbed against MBP from monospecific antiserum by chromatography.
ポリ/モノ	ポリクローナル

アプリケーション

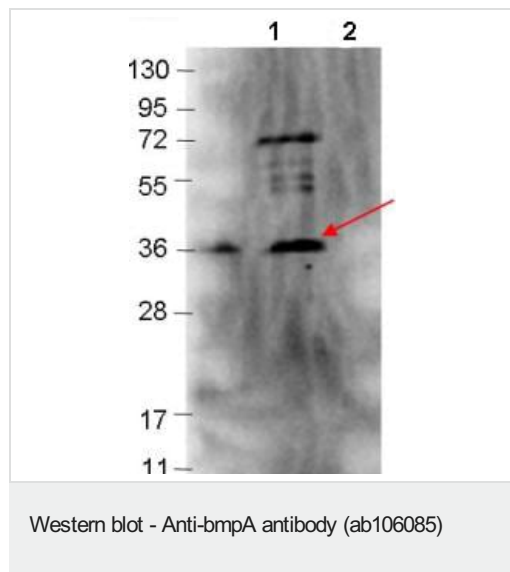
The Abpromise guarantee **Abpromise保証は、次のテスト済みアプリケーションにおけるab106085の使用に適用されます**
 アプリケーションノートには、推奨の開始希釈率がありますが、適切な希釈率につきましてはご検討ください。

アプリケーション	Abreviews	特記事項
WB		1/1000. Predicted molecular weight: 37 kDa.

ターゲット情報

関連性 Belongs to the BMP lipoprotein family.
細胞内局在 Cell membrane; Lipid-anchor.

画像



All lanes : Anti-bmpA antibody (ab106085) at 1/1000 dilution

Lane 1 : MBP-bmpA fusion protein

Lane 2 : MBP alone

Lysates/proteins at 0.1 µg per lane.

Secondary

All lanes : Goat-anti-Rabbit HRP at 1/40000 dilution

Predicted band size: 37 kDa

4-20% gel.

Please note: All products are "FOR RESEARCH USE ONLY. NOT FOR USE IN DIAGNOSTIC PROCEDURES"

Our Abpromise to you: Quality guaranteed and expert technical support

- Replacement or refund for products not performing as stated on the datasheet
- Valid for 12 months from date of delivery
- Response to your inquiry within 24 hours
- We provide support in Chinese, English, French, German, Japanese and Spanish

- Extensive multi-media technical resources to help you
- We investigate all quality concerns to ensure our products perform to the highest standards

If the product does not perform as described on this datasheet, we will offer a refund or replacement. For full details of the Abpromise, please visit <https://www.abcam.co.jp/abpromise> or contact our technical team.

Terms and conditions

- Guarantee only valid for products bought direct from Abcam or one of our authorized distributors