

Anti-BMP7 antibody ab93636

★★★★★ [1 Abreviews](#) [2 References](#) [画像数 2](#)

製品の概要

製品名	Anti-BMP7 antibody
製品の詳細	Rabbit polyclonal to BMP7
由来種	Rabbit
アプリケーション	適用あり: WB, IHC-P
種交差性	交差種: Rat, Human
免疫原	Synthetic peptide corresponding to Human BMP7 (C terminal). Database link: NM_001719
ポジティブ・コントロール	Rat kidney tissue; Human kidney cell lysate
特記事項	<p>The Life Science industry has been in the grips of a reproducibility crisis for a number of years. Abcam is leading the way in addressing this with our range of recombinant monoclonal antibodies and knockout edited cell lines for gold-standard validation. Please check that this product meets your needs before purchasing.</p> <p>If you have any questions, special requirements or concerns, please send us an inquiry and/or contact our Support team ahead of purchase. Recommended alternatives for this product can be found below, along with publications, customer reviews and Q&As</p>

製品の特性

製品の状態	Liquid
保存方法	Shipped at 4°C. Store at -20°C. Stable for 12 months at -20°C.
バッファー	Preservative: 0.02% Sodium azide Constituent: 1% BSA
精製度	Protein A purified
ポリ/モノ	ポリクローナル
アイソタイプ	IgG

アプリケーション

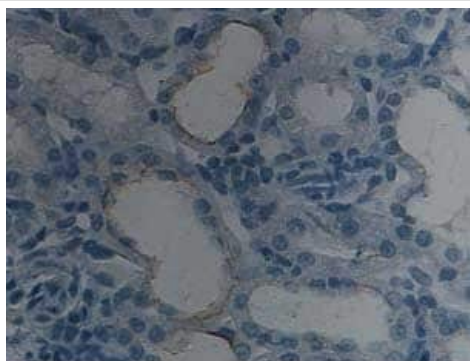
The Abpromise guarantee **Abpromise保証は、**次のテスト済みアプリケーションにおけるab93636の使用に適用されます
アプリケーションノートには、推奨の開始希釈率がありますが、適切な希釈率につきましてはご検討ください。

アプリケーション	Abreviews	特記事項
WB	★★★★★ (1)	1/200 - 1/1000. Predicted molecular weight: 49 kDa.
IHC-P		1/50 - 1/200.

ターゲット情報

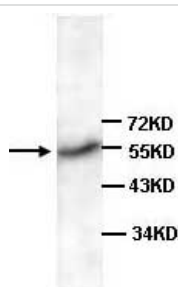
機能	Induces cartilage and bone formation. May be the osteoinductive factor responsible for the phenomenon of epithelial osteogenesis. Plays a role in calcium regulation and bone homeostasis.
組織特異性	Expressed in the kidney and bladder. Lower levels seen in the brain.
配列類似性	Belongs to the TGF-beta family.
発生段階	Expressed in the developing eye, brain and ear during embryogenesis.
翻訳後修飾	Several N-termini starting at positions 293, 300, 315 and 316 have been identified by direct sequencing resulting in secretion of different mature forms (PubMed:17977014).
細胞内局在	Secreted.

画像



ab93636, at 1/100 dilution, staining secreted BMP7 in formalin-fixed, paraffin-embedded rat kidney tissue by Immunohistochemistry.

Immunohistochemistry (Formalin/PFA-fixed paraffin-embedded sections) - Anti-BMP7 antibody (ab93636)



Anti-BMP7 antibody (ab93636) at 1/200 dilution + Human kidney cell lysate

Predicted band size: 49 kDa

Western blot - Anti-BMP7 antibody (ab93636)

Please note: All products are "FOR RESEARCH USE ONLY. NOT FOR USE IN DIAGNOSTIC PROCEDURES"

Our Abpromise to you: Quality guaranteed and expert technical support

- Replacement or refund for products not performing as stated on the datasheet
- Valid for 12 months from date of delivery
- Response to your inquiry within 24 hours

- We provide support in Chinese, English, French, German, Japanese and Spanish
- Extensive multi-media technical resources to help you
- We investigate all quality concerns to ensure our products perform to the highest standards

If the product does not perform as described on this datasheet, we will offer a refund or replacement. For full details of the Abpromise, please visit <https://www.abcam.co.jp/abpromise> or contact our technical team.

Terms and conditions

- Guarantee only valid for products bought direct from Abcam or one of our authorized distributors