

Anti-Blood Group A, B and H Antigens antibody [HE-10] ab2523

2 References [画像数 2](#)

製品の概要

製品名	Anti-Blood Group A, B and H Antigens antibody [HE-10]
製品の詳細	Mouse monoclonal [HE-10] to Blood Group A, B and H Antigens
由来種	Mouse
特異性	Studies with specific oligosaccharides showed that this antibody detects A and H antigens with chain types 3 and 4. This antibody does not react with A disaccharide, A trisaccharide, A type 1, A type 2 or ALe ^b . This antibody reacts with normal and malignant tissue sections from donors with blood group A. It does not react with normal tissue sections from donors with blood group B and 0 but it does react specifically with malignant tissues.
アプリケーション	適用あり: Flow Cyt
種交差性	交差種: Human
免疫原	Tissue, cells or virus corresponding to Blood Group A, B and H Antigens. Mixture of erythrocytes of blood group A1 and glycoprotein fraction isolated from the saliva of secretors with blood group A.
特記事項	<p>The Life Science industry has been in the grips of a reproducibility crisis for a number of years. Abcam is leading the way in addressing this with our range of recombinant monoclonal antibodies and knockout edited cell lines for gold-standard validation. Please check that this product meets your needs before purchasing.</p> <p>If you have any questions, special requirements or concerns, please send us an inquiry and/or contact our Support team ahead of purchase. Recommended alternatives for this product can be found below, along with publications, customer reviews and Q&As</p>

製品の特性

製品の状態	Liquid
保存方法	Shipped at 4°C. Store at +4°C short term (1-2 weeks). Store at -20°C or -80°C. Avoid freeze / thaw cycle.
バッファー	Constituent: Tissue culture supernatant
精製度	Tissue culture supernatant
特記事項 (精製)	Concentrated by ultrafiltration (100 kDa cut-off). Actual immunoglobulin concentration not determined.
ポリ/モノ	モノクローナル

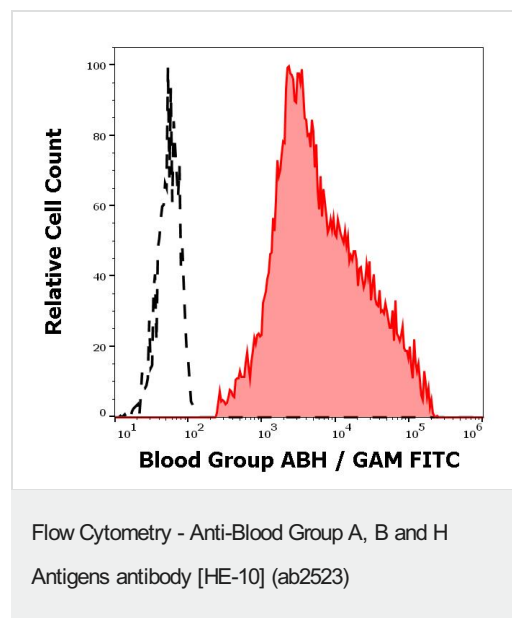
クローン名	HE-10
ミエローマ	unknown
アイソタイプ	IgM
軽鎖の種類	unknown

アプリケーション

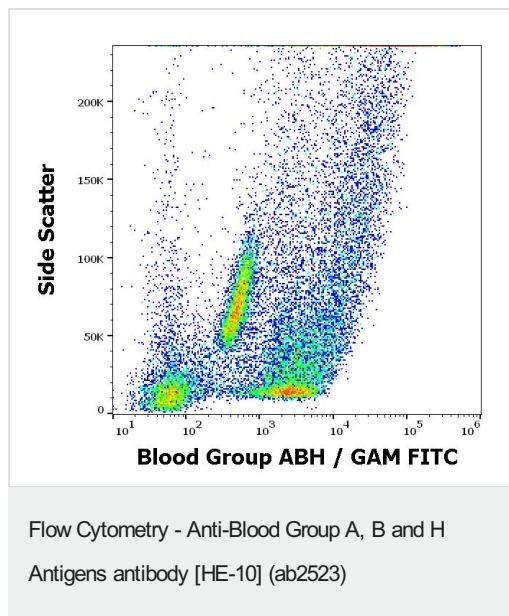
The Abpromise guarantee **Abpromise保証は、次のテスト済みアプリケーションにおけるab2523の使用に適用されます**
 アプリケーションノートには、推奨の開始希釈率がありますが、適切な希釈率につきましてはご確認ください。

アプリケーション	Abreviews	特記事項
Flow Cyt		Use at an assay dependent concentration.

画像



Separation of human erythrocytes from blood group A donor (red-filled) from erythrocytes from blood group O donor (black-dashed) in flow cytometry analysis (surface staining) of human peripheral whole blood samples using ab2523.



Flow cytometry surface staining pattern of human peripheral whole blood from group A donor stained using ab2523.

Please note: All products are "FOR RESEARCH USE ONLY. NOT FOR USE IN DIAGNOSTIC PROCEDURES"

Our Abpromise to you: Quality guaranteed and expert technical support

- Replacement or refund for products not performing as stated on the datasheet
- Valid for 12 months from date of delivery
- Response to your inquiry within 24 hours
- We provide support in Chinese, English, French, German, Japanese and Spanish
- Extensive multi-media technical resources to help you
- We investigate all quality concerns to ensure our products perform to the highest standards

If the product does not perform as described on this datasheet, we will offer a refund or replacement. For full details of the Abpromise, please visit <https://www.abcam.co.jp/abpromise> or contact our technical team.

Terms and conditions

- Guarantee only valid for products bought direct from Abcam or one of our authorized distributors