

### Anti-BLBP antibody ab32423

★★★★★ [12 Abreviews](#) [89 References](#) [画像数 6](#)

#### 製品の概要

製品名	Anti-BLBP antibody
製品の詳細	Rabbit polyclonal to BLBP
由来種	Rabbit
特異性	From Jan 2024, QC testing of replenishment batches of this polyclonal changed. All tested and expected application and reactive species combinations are still covered by our Abcam product promise. However, we no longer test all applications. For more information on a specific batch, please contact our Scientific Support who will be happy to help. You may also be interested in our alternative recombinant antibody, <a href="#">ab279649</a> .
アプリケーション	<b>適用あり:</b> IHC-P, ICC/IF, WB
種交差性	<b>交差種:</b> Mouse, Rat, Zebrafish, Quail <b>交差が予測される動物種:</b> Chicken, Human, Pig 
免疫原	Synthetic peptide corresponding to Mouse BLBP aa 1-100 conjugated to keyhole limpet haemocyanin. (Peptide available as <a href="#">ab32422</a> )
ポジティブ・コントロール	ICC/IF: Primary hippocampal rat neurons/glia, (obtained from Neuromics, cat. no. PC35101), DIV14. cells. PC12 cells. Primary mouse neurons/glia, DIV14 cells. IHC-P: Rat embryo spinal cord, Mouse embryo spinal cord, Quail developing spinal cord, Zebrafish whole body tissue sections. WB: Mouse Brain.
特記事項	<p>The Life Science industry has been in the grips of a reproducibility crisis for a number of years. Abcam is leading the way in addressing this with our range of recombinant monoclonal antibodies and knockout edited cell lines for gold-standard validation. Please check that this product meets your needs before purchasing.</p> <p>If you have any questions, special requirements or concerns, please send us an inquiry and/or contact our Support team ahead of purchase. Recommended alternatives for this product can be found below, along with publications, customer reviews and Q&amp;As</p>

#### 製品の特性

製品の状態	Liquid
保存方法	Shipped at 4°C. Store at +4°C short term (1-2 weeks). Upon delivery aliquot. Store at -20°C or -80°C. Avoid freeze / thaw cycle.

## バッファー

Preservative: 0.02% Sodium azide

Constituent: PBS

Batches of this product that have a concentration < 1mg/ml may have BSA added as a stabilising agent. If you would like information about the formulation of a specific lot, please contact our scientific support team who will be happy to help.

## 精製度

Immunogen affinity purified

## ポリ/モノ

ポリクローナル

## アイソタイプ

IgG

## アプリケーション

**The Abpromise guarantee** Abpromise保証は、次のテスト済みアプリケーションにおけるab32423の使用に適用されます

アプリケーションノートには、推奨の開始希釈率がありますが、適切な希釈率につきましてはご確認ください。

アプリケーション	Abreviews	特記事項
IHC-P	★★★★★ (7)	1/200 - 1/1000.
ICC/IF	★★★★★ (3)	Use a concentration of 1 µg/ml.
WB		Use a concentration of 1 µg/ml. Detects a band of approximately 15 kDa (predicted molecular weight: 15 kDa). Abcam recommends using milk as the blocking agent.

## ターゲット情報

### 機能

B-FABP could be involved in the transport of a so far unknown hydrophobic ligand with potential morphogenic activity during CNS development. It is required for the establishment of the radial glial fiber system in developing brain, a system that is necessary for the migration of immature neurons to establish cortical layers.

### 組織特異性

Expressed in brain and other neural tissues.

### 配列類似性

Belongs to the calycin superfamily. Fatty-acid binding protein (FABP) family.

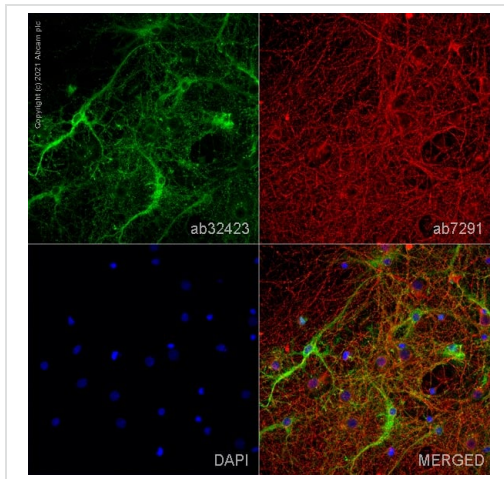
### ドメイン

Forms a beta-barrel structure that accommodates the hydrophobic ligand in its interior.

### 細胞内局在

Cytoplasm.

## 画像



Immunocytochemistry/ Immunofluorescence - Anti-BLBP antibody (ab32423)

ab32423 staining BLBP in primary hippocampal rat neurons/glia, (obtained from Neuromics, cat. no. PC35101), DIV14. cells. The cells were fixed with 4% paraformaldehyde (10 min), permeabilized with 0.1% PBS-Tween for 5 minutes and then blocked with 1% BSA/10% normal goat serum/0.3M glycine in 0.1% PBS-Tween for 1h. The cells were then incubated overnight at 4°C with ab32423 at 5µg/ml and **ab7291**, Mouse monoclonal [DM1A] to alpha Tubulin - Loading Control. Cells were then incubated with **ab150081**, Goat polyclonal Secondary Antibody to Rabbit IgG - H&L (Alexa Fluor® 488), pre-adsorbed at 1/1000 dilution (shown in green) and **ab150080**, Goat polyclonal Secondary Antibody to Rabbit IgG - H&L (Alexa Fluor® 594) at 1/1000 dilution (shown in pseudocolour red). Nuclear DNA was labelled with DAPI (shown in blue).

Image was acquired with a high-content analyser (Operetta CLS, Perkin Elmer) and a maximum intensity projection of confocal sections is shown.



Immunohistochemistry (Formalin/PFA-fixed paraffin-embedded sections) - Anti-BLBP antibody (ab32423)

This image is courtesy of Carl Hobbs, King's College London, United Kingdom

BLBP detected on rat embryo day 16 spinal cord T/S on 5 micron thick formalin-fixed paraffin wax embedded sections using Rabbit polyclonal to BLBP (ab32423; incubated at 1/200 for 16h at RT). 1% BSA (10 mins at RT) used as blocking agent. Secondary Antibody was biotin labeled anti-rabbit IgG (1/300).

Immunoreactivity was visualised by standard streptAvidin-biotin-complex using peroxidase as a reporter and DAB as chromogen following citric acid (pH 6) heat mediated antigen retrieval.

Expected specific staining observed with ab32423 with low signal to noise ratio.



Western blot - Anti-BLBP antibody (ab32423)

Anti-BLBP antibody (ab32423) at 1/250 dilution + Mouse brain tissue lysate - total protein (0 days) (**ab7188**) at 10 µg

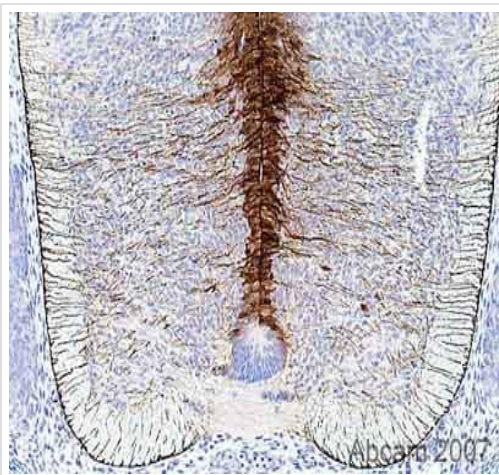
### Secondary

IRDye 680 Conjugated Goat Anti-Rabbit IgG (H+L) at 1/10000 dilution

Performed under reducing conditions.

**Predicted band size:** 15 kDa

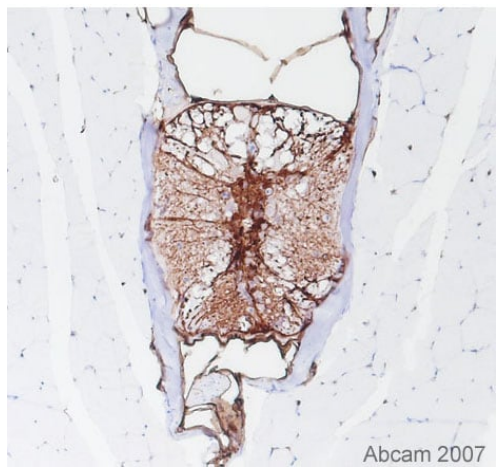
**Observed band size:** 15 kDa



Immunohistochemistry (Formalin/PFA-fixed paraffin-embedded sections) - Anti-BLBP antibody (ab32423)

This image is courtesy of Carl Hobbs, King's College London, United Kingdom

BLBP detected on mouse embryo day 16 spinal cord T/S on 5 micron thick formalin-fixed paraffin wax embedded sections using Rabbit polyclonal to BLBP (ab32423; incubated at 1/300 for 16h at RT). 1% BSA (10 mins at RT) used as blocking agent. Secondary Antibody was biotin labeled anti-rabbit IgG (1/300). Immunoreactivity was visualised by standard streptAvidin-biotin-complex using peroxidase as a reporter and DAB as chromogen following citric acid (pH 6) heat mediated antigen retrieval. Expected specific staining observed with ab32423.

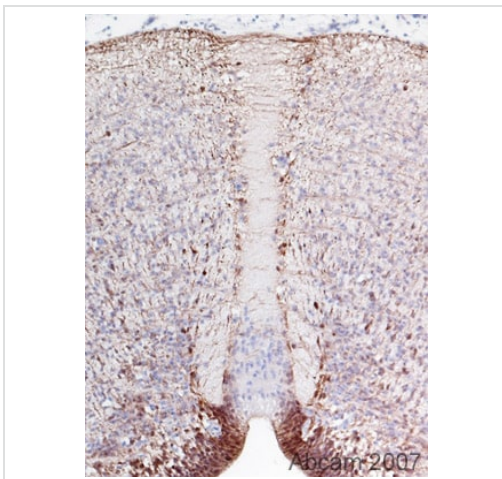


Immunohistochemical staining (Formaldehyde/PFA-fixed paraffin-embedded sections) for BLBP antibody (ab32423) on Zebrafish Tissue sections (young adult whole body T/S). Antigen retrieval step: Heat mediated Blocking step: 1% BSA for 10 mins at RT.

Primary Antibody: ab32423 incubated at 1/500 for 2 hours at RT.  
Secondary Antibody: Biotin labelled goat anti rabbit IgG (1/300).

Immunohistochemistry (Formalin/PFA-fixed paraffin-embedded sections) - Anti-BLBP antibody (ab32423)

This image is courtesy of Carl Hobbs, King's College London, United Kingdom



Immunohistochemical detection (on Formaldehyde /PFA-fixed paraffin-embedded sections) of BLBP protein using BLBP antibody (ab32423) on Quail Tissue sections (developing spinal cord). Antigen retrieval step: Heat mediated. Blocking step: 1% BSA for 10 mins at RT.

Primary Antibody: ab32423 incubated at 1/500 for 2 hours at RT.  
Secondary Antibody: Biotin labelled goat anti rabbit IgG (1/300).

Immunohistochemistry (Formalin/PFA-fixed paraffin-embedded sections) - Anti-BLBP antibody (ab32423)

This image is courtesy of Carl Hobbs, King's College London, United Kingdom

**Please note:** All products are "FOR RESEARCH USE ONLY. NOT FOR USE IN DIAGNOSTIC PROCEDURES"

## **Our Abpromise to you: Quality guaranteed and expert technical support**

---

- Replacement or refund for products not performing as stated on the datasheet
- Valid for 12 months from date of delivery
- Response to your inquiry within 24 hours
  
- We provide support in Chinese, English, French, German, Japanese and Spanish
- Extensive multi-media technical resources to help you
- We investigate all quality concerns to ensure our products perform to the highest standards

If the product does not perform as described on this datasheet, we will offer a refund or replacement. For full details of the Abpromise, please visit <https://www.abcam.co.jp/abpromise> or contact our technical team.

## **Terms and conditions**

---

- Guarantee only valid for products bought direct from Abcam or one of our authorized distributors