

Anti-BIT1 antibody [EPR5165] ab109291

リコンビナント **RabMAb**

画像数 2

製品の概要

製品名	Anti-BIT1 antibody [EPR5165]
製品の詳細	Rabbit monoclonal [EPR5165] to BIT1
由来種	Rabbit
アプリケーション	適用あり: WB 適用なし: Flow Cyt, IHC-P or IP
種交差性	交差種: Human
免疫原	Synthetic peptide. This information is proprietary to Abcam and/or its suppliers.
ポジティブ・コントロール	Jurkat, Raji, MCF7, and HepG2 whole cell lysate (ab7900)
特記事項	<p>This product is a recombinant monoclonal antibody, which offers several advantages including:</p> <ul style="list-style-type: none"> - High batch-to-batch consistency and reproducibility - Improved sensitivity and specificity - Long-term security of supply - Animal-free production <p>For more information see here.</p> <p>Our RabMAb[®] technology is a patented hybridoma-based technology for making rabbit monoclonal antibodies. For details on our patents, please refer to RabMAb[®] patents.</p> <p>Mouse, Rat: We have preliminary internal testing data to indicate this antibody may not react with these species. Please contact us for more information.</p>

製品の特性

製品の状態	Liquid
保存方法	Shipped at 4°C. Store at -20°C. Stable for 12 months at -20°C.
バッファー	<p>pH: 7.20</p> <p>Preservative: 0.05% Sodium azide</p> <p>Constituents: 0.1% BSA, 40% Glycerol (glycerin, glycerine), 9.85% Tris glycine, 50% Tissue culture supernatant</p>
精製度	Protein A purified
ポリ/モノ	モノクローナル

クローン名EPR5165
アイソタイプIgG

アプリケーション

The Abpromise guarantee Abpromise保証は、 次のテスト済みアプリケーションにおけるab109291の使用に適用されます
アプリケーションノートには、推奨の開始希釈率がありますが、適切な希釈率につきましてはご検討ください。

アプリケーション	Abreviews	特記事項
WB		1/10000 - 1/50000. Detects a band of approximately 19,21 kDa (predicted molecular weight: 19 kDa).

追加情報Is unsuitable for Flow Cyt, IHC-P or IP.

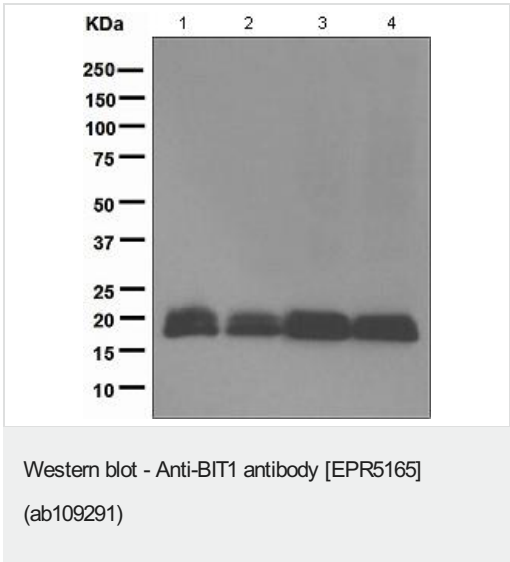
ターゲット情報

機能 The natural substrate for this enzyme may be peptidyl-tRNAs which drop off the ribosome during protein synthesis.
Promotes caspase-independent apoptosis by regulating the function of two transcriptional regulators, AES and TLE1.

配列類似性 Belongs to the PTH2 family.

細胞内局在 Mitochondrion.

画像







All lanes : Anti-BIT1 antibody [EPR5165] (ab109291) at 1/10000 dilution

- Lane 1 :** Jurkat cell lysate
- Lane 2 :** Raji cell lysate
- Lane 3 :** MCF7 cell lysate
- Lane 4 :** HepG2 cell lysate

Lysates/proteins at 10 µg per lane.

Predicted band size: 19 kDa

Why choose a recombinant antibody?

 <p>Research with confidence Consistent and reproducible results</p>	 <p>Long-term and scalable supply Recombinant technology</p>
 <p>Success from the first experiment Confirmed specificity</p>	 <p>Ethical standards compliant Animal-free production</p>

Anti-BIT1 antibody [EPR5165] (ab109291)

Please note: All products are "FOR RESEARCH USE ONLY. NOT FOR USE IN DIAGNOSTIC PROCEDURES"

Our Abpromise to you: Quality guaranteed and expert technical support

- Replacement or refund for products not performing as stated on the datasheet
- Valid for 12 months from date of delivery
- Response to your inquiry within 24 hours
- We provide support in Chinese, English, French, German, Japanese and Spanish
- Extensive multi-media technical resources to help you
- We investigate all quality concerns to ensure our products perform to the highest standards

If the product does not perform as described on this datasheet, we will offer a refund or replacement. For full details of the Abpromise, please visit <https://www.abcam.co.jp/abpromise> or contact our technical team.

Terms and conditions

- Guarantee only valid for products bought direct from Abcam or one of our authorized distributors