

### Biotin Anti-TCR alpha + TCR beta antibody [IP26] ab95647

画像数 1

#### 製品の概要

製品名	Biotin Anti-TCR alpha + TCR beta antibody [IP26]
製品の詳細	Biotin Mouse monoclonal [IP26] to TCR alpha + TCR beta
由来種	Mouse
標識	Biotin
アプリケーション	適用あり: Flow Cyt
種交差性	交差種: Human
免疫原	Full length protein corresponding to Human TCR alpha + TCR beta. Native protein
ポジティブ・コントロール	Normal human peripheral blood cells
特記事項	<p>The Life Science industry has been in the grips of a reproducibility crisis for a number of years. Abcam is leading the way in addressing this with our range of recombinant monoclonal antibodies and knockout edited cell lines for gold-standard validation. Please check that this product meets your needs before purchasing.</p> <p>If you have any questions, special requirements or concerns, please send us an inquiry and/or contact our Support team ahead of purchase. Recommended alternatives for this product can be found below, along with publications, customer reviews and Q&amp;As</p>

#### 製品の特性

製品の状態	Liquid
保存方法	Shipped at 4°C. Store at +4°C short term (1-2 weeks). Store at -20°C or -80°C. Avoid freeze / thaw cycle.
バッファー	<p>pH: 7.20</p> <p>Preservative: 0.09% Sodium azide</p> <p>Constituents: 0.87% Sodium chloride, PBS</p>
精製度	Protein G purified
ポリ/モノ	モノクローナル
クローン名	IP26
アイソタイプ	IgG1
軽鎖の種類	kappa

## アプリケーション

**The Abpromise guarantee**      Abpromise保証は、次のテスト済みアプリケーションにおけるab95647の使用に適用されます  
アプリケーションノートには、推奨の開始希釈率がありますが、適切な希釈率につきましてはご検討ください。

アプリケーション	Abreviews	特記事項
Flow Cyt		Use at an assay dependent concentration. 0.5 µg/test

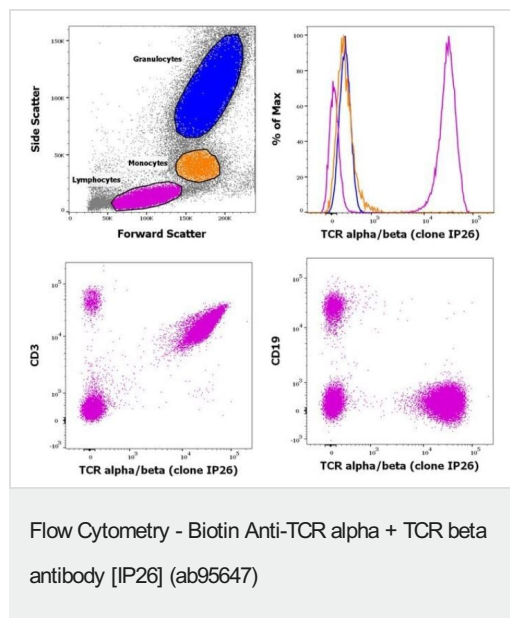
## ターゲット情報

**関連性**

The receptors on T cells consist of immunoglobulin like integral membrane glycoproteins containing 2 polypeptide subunits, alpha and beta, of similar molecular weight, 40 to 55 kD in the human. Like the immunoglobulins of the B cells, each T cell receptor subunit has, external to the cell membrane, an N terminal variable domain and a C terminal constant domain. T cell receptors recognise foreign antigens which have been processed as small peptides and bound to major histocompatibility complex molecules at the surface of antigen presenting cells. Each T cell receptor is a dimer consisting of one alpha and one beta chain or one delta and one gamma chain. In a single cell, the T cell receptor loci are rearranged and expressed in the order delta, gamma, beta, and alpha. If both delta and gamma rearrangements produce functional chains, the cell expresses delta and gamma. If not, the cell proceeds to rearrange the beta and alpha loci.

**細胞内局在**      Type I membrane protein.

## 画像



Staining of human peripheral blood mononuclear cells with CD45 Pacific Blue, CD3 FITC, CD19 PE and TCR alpha/beta Biotin followed by staining with APC conjugated streptavidin. As expected based on known relative expression patterns, TCR alpha/beta clone IP26 stains a subset of lymphocytes (pink), but not monocytes (orange) and granulocytes (blue).

**Please note:** All products are "FOR RESEARCH USE ONLY. NOT FOR USE IN DIAGNOSTIC PROCEDURES"

**Our Abpromise to you: Quality guaranteed and expert technical support**

- Replacement or refund for products not performing as stated on the datasheet
- Valid for 12 months from date of delivery
- Response to your inquiry within 24 hours
  
- We provide support in Chinese, English, French, German, Japanese and Spanish
- Extensive multi-media technical resources to help you
- We investigate all quality concerns to ensure our products perform to the highest standards

If the product does not perform as described on this datasheet, we will offer a refund or replacement. For full details of the Abpromise, please visit <https://www.abcam.co.jp/abpromise> or contact our technical team.

#### **Terms and conditions**

---

- Guarantee only valid for products bought direct from Abcam or one of our authorized distributors