

### Biotin Anti-M13 antibody [E1] ab17269

画像数 1

#### 製品の概要

製品名	Biotin Anti-M13 antibody [E1]
製品の詳細	Biotin Mouse monoclonal [E1] to M13
由来種	Mouse
標識	Biotin
特異性	M13 antibody [E1] (ab17269) is specific for gp3 protein.
アプリケーション	<b>適用あり:</b> WB, ELISA, Flow Cyt, IHC
種交差性	<b>交差種:</b> Enterobacteria phage M13
免疫原	Full length M13 phage coat protein; Exact epitope not determined.
特記事項	<p>M13 antibody [E1] (ab17269) has numerous uses in screening phage display libraries, especially the screening of single chain antibody libraries.</p> <p>The Life Science industry has been in the grips of a reproducibility crisis for a number of years. Abcam is leading the way in addressing this with our range of recombinant monoclonal antibodies and knockout edited cell lines for gold-standard validation. Please check that this product meets your needs before purchasing.</p> <p>If you have any questions, special requirements or concerns, please send us an inquiry and/or contact our Support team ahead of purchase. Recommended alternatives for this product can be found below, along with publications, customer reviews and Q&amp;As</p>

#### 製品の特性

製品の状態	Liquid
保存方法	Shipped at 4°C. Upon delivery aliquot. Store at -20°C. Avoid freeze / thaw cycle.
バッファー	Preservative: 0.08% Sodium azide Constituent: PBS
精製度	Protein A purified
特記事項 (精製)	M13 antibody [E1] (ab17269) is purified using 0.2µm sterile filter.
一次抗体 備考	M13 antibody [E1] (ab17269) has numerous uses in screening phage display libraries, especially the screening of single chain antibody libraries.
ポリ/モノ	モノクローナル
クローン名	E1

ミエローマ	unknown
アイソタイプ	IgG3
軽鎖の種類	unknown

## アプリケーション

**The Abpromise guarantee**      Abpromise保証は、次のテスト済みアプリケーションにおけるab17269の使用に適用されます  
 アプリケーションノートには、推奨の開始希釈率がありますが、適切な希釈率につきましてはご検討ください。

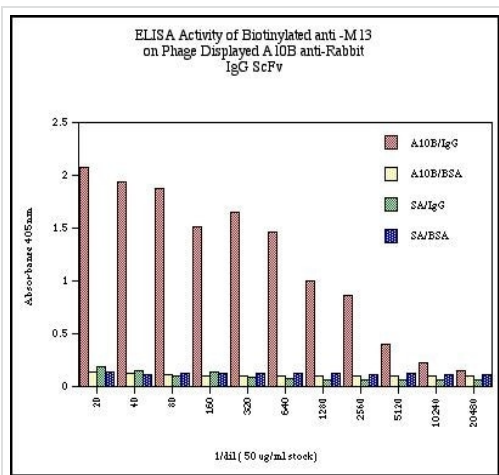
アプリケーション	Abreviews	特記事項
WB		Use a concentration of 1 - 5 µg/ml.
ELISA		Use at an assay dependent concentration.
Flow Cyt		Use 1µg for 10 <sup>6</sup> cells. <b>ab97679</b> - Mouse monoclonal IgG2a, is suitable for use as an isotype control with this antibody.
IHC		Use at an assay dependent concentration.

## ターゲット情報

**関連性**

The bacteriophage known as "M13" forms the basis of cloning systems designed to easily introduce mutations into genes inserted into the phage genome. It also has been used in various "phage display" methodologies and combinatorial DNA and peptide libraries. Coat protein A (G3P) is necessary for adsorption of the virion onto the F-pilus of the host cell. There are about five copies of this protein per mature phage. Consists of three domains (N1, N2, and CT). The N2 domain interacts with the F pilus, whereas the N1 domain (connected to N2 by a flexible glycine-rich linker and tightly interacting with it on the phage) forms a complex with the C-terminal domain of tolA at later stages of the infection process. They are located at the adsorption end of the phage particle.

## 画像



ELISA - Biotin Anti-M13 antibody [E1] (ab17269)

ELISA absorbancy readings for A10B phage on rabbit IgG (A10B/IgG), A10B phage on BSA (A10B/BSA), streptavidin on rabbit IgG (SA/IgG) and streptavidin on BSA (SA/BSA) for each dilution of ab17269.

**Please note:** All products are "FOR RESEARCH USE ONLY. NOT FOR USE IN DIAGNOSTIC PROCEDURES"

### Our Abpromise to you: Quality guaranteed and expert technical support

- Replacement or refund for products not performing as stated on the datasheet
- Valid for 12 months from date of delivery
- Response to your inquiry within 24 hours
- We provide support in Chinese, English, French, German, Japanese and Spanish
- Extensive multi-media technical resources to help you
- We investigate all quality concerns to ensure our products perform to the highest standards

If the product does not perform as described on this datasheet, we will offer a refund or replacement. For full details of the Abpromise, please visit <https://www.abcam.co.jp/abpromise> or contact our technical team.

### Terms and conditions

- Guarantee only valid for products bought direct from Abcam or one of our authorized distributors