

### Biotin Anti-Galectin 3 antibody [M3/38] ab95679

画像数 2

#### 製品の概要

製品名	Biotin Anti-Galectin 3 antibody [M3/38]
製品の詳細	Biotin Rat monoclonal [M3/38] to Galectin 3
由来種	Rat
標識	Biotin
アプリケーション	<b>適用あり:</b> Flow Cyt
種交差性	<b>交差種:</b> Mouse, Human
免疫原	Galectin 3 of mouse origin
ポジティブ・コントロール	Normal human peripheral blood cells, C57BL/6 Mouse bone marrow cells.
特記事項	<p>The Life Science industry has been in the grips of a reproducibility crisis for a number of years. Abcam is leading the way in addressing this with our range of recombinant monoclonal antibodies and knockout edited cell lines for gold-standard validation. Please check that this product meets your needs before purchasing.</p> <p>If you have any questions, special requirements or concerns, please send us an inquiry and/or contact our Support team ahead of purchase. Recommended alternatives for this product can be found below, along with publications, customer reviews and Q&amp;As</p>

#### 製品の特性

製品の状態	Liquid
保存方法	Shipped at 4°C. Store at +4°C short term (1-2 weeks). Store at -20°C or -80°C. Avoid freeze / thaw cycle.
バッファー	<p>pH: 7.20</p> <p>Preservative: 0.09% Sodium azide</p> <p>Constituent: PBS</p>
精製度	Protein G purified
ポリ/モノ	モノクローナル
クローン名	M3/38
アイソタイプ	IgG2a
軽鎖の種類	kappa

## アプリケーション

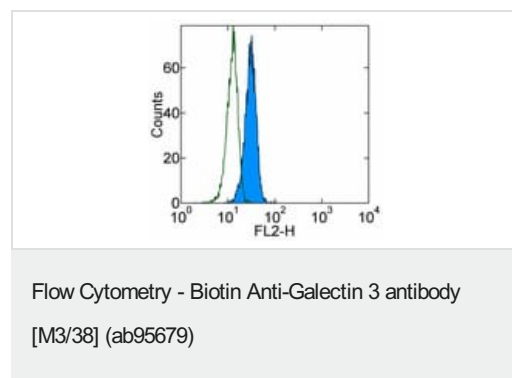
**The Abpromise guarantee** Abpromise保証は、次のテスト済みアプリケーションにおけるab95679の使用に適用されます  
アプリケーションノートには、推奨の開始希釈率がありますが、適切な希釈率につきましてはご検討ください。

アプリケーション	Abreviews	特記事項
Flow Cyt		Use 0.25µg for 10 <sup>5</sup> cells. ab95679 can be used at 0.25 µg/per test. A test is defined as the amount (µg)/test of antibody that will stain a cell sample in a final volume of 100 µL. Cell number should be determined empirically but can range from 10 <sup>5</sup> to 10 <sup>8</sup> cells/test.

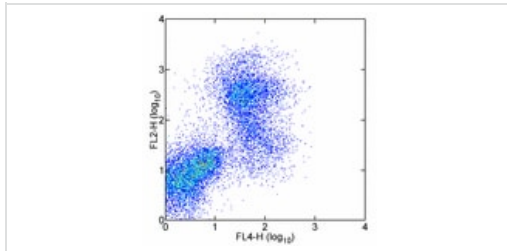
## ターゲット情報

機能	Galactose-specific lectin which binds IgE. May mediate with the alpha-3, beta-1 integrin the stimulation by CSPG4 of endothelial cells migration. Together with DMBT1, required for terminal differentiation of columnar epithelial cells during early embryogenesis.
組織特異性	A major expression is found in the colonic epithelium. It is also abundant in the activated macrophages.
配列類似性	Contains 1 galectin domain.
細胞内局在	Nucleus. Cytoplasmic in adenomas and carcinomas. May be secreted by a non-classical secretory pathway and associate with the cell surface.

## 画像



ab95679 at 0.125µg dilution staining Galectin 3 in C57BL/6 mouse bone marrow cells by Flow Cytometry (shown in blue) followed by Streptavidin PE.



ab95679 at 0.125µg dilution staining the monocyte population in normal human peripheral blood cells by Flow Cytometry followed by Streptavidin PE.

Flow Cytometry - Biotin Anti-Galectin 3 antibody  
[M3/38] (ab95679)

**Please note:** All products are "FOR RESEARCH USE ONLY. NOT FOR USE IN DIAGNOSTIC PROCEDURES"

### Our Abpromise to you: Quality guaranteed and expert technical support

---

- Replacement or refund for products not performing as stated on the datasheet
- Valid for 12 months from date of delivery
- Response to your inquiry within 24 hours
- We provide support in Chinese, English, French, German, Japanese and Spanish
- Extensive multi-media technical resources to help you
- We investigate all quality concerns to ensure our products perform to the highest standards

If the product does not perform as described on this datasheet, we will offer a refund or replacement. For full details of the Abpromise, please visit <https://www.abcam.co.jp/abpromise> or contact our technical team.

### Terms and conditions

---

- Guarantee only valid for products bought direct from Abcam or one of our authorized distributors