

### Biotin Anti-Follistatin antibody ab47942

**3 References**   [画像数 2](#)

#### 製品の概要

製品名	Biotin Anti-Follistatin antibody
製品の詳細	Biotin Rabbit polyclonal to Follistatin
由来種	Rabbit
標識	Biotin
アプリケーション	<b>適用あり:</b> Sandwich ELISA, WB
種交差性	<b>交差種:</b> Human
免疫原	Recombinant full length Follistatin protein (Human) highly pure (>98%)
ポジティブ・コントロール	WB: Recombinant human Follistatin protein ( <a href="#">ab50163</a> )
特記事項	<p>Once frozen, avoid more than one freeze-thaw cycle.</p> <p>The Life Science industry has been in the grips of a reproducibility crisis for a number of years. Abcam is leading the way in addressing this with our range of recombinant monoclonal antibodies and knockout edited cell lines for gold-standard validation. Please check that this product meets your needs before purchasing.</p> <p>If you have any questions, special requirements or concerns, please send us an inquiry and/or contact our Support team ahead of purchase. Recommended alternatives for this product can be found below, along with publications, customer reviews and Q&amp;As</p>

#### 製品の特性

製品の状態	Lyophilized:Reconstitute with 1ml sterile PBS solution containing 0.1% BSA.
保存方法	Shipped at 4°C. Store at +4°C short term (1-2 weeks). Store at -20°C or -80°C. Avoid freeze / thaw cycle.
バッファー	Constituents: PBS, 0.1% BSA
精製度	Immunogen affinity purified
特記事項(精製)	This antibody was purified by affinity chromatography and then biotinylated.
ポリ/モノ	ポリクローナル
アイソタイプ	IgG

#### アプリケーション

## The Abpromise guarantee

**Abpromise保証は、次のテスト済みアプリケーションにおけるab47942の使用に適用されます**

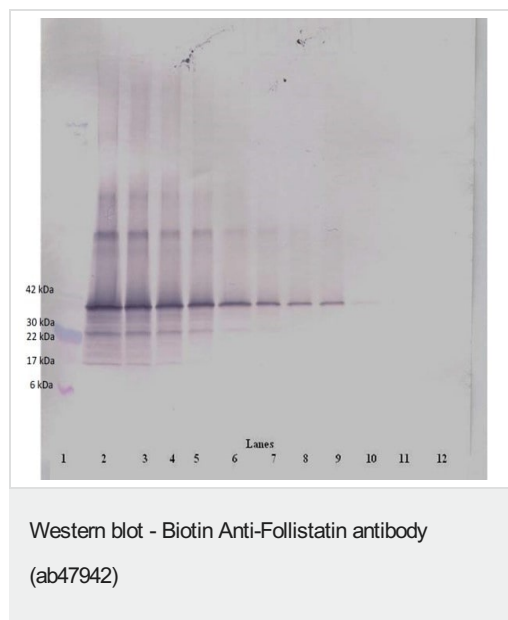
アプリケーションノートには、推奨の開始希釈率がありますが、適切な希釈率につきましてはご検討ください。

アプリケーション	Abreviews	特記事項
<b>Sandwich ELISA</b>		Use a concentration of 0.25 - 1 µg/ml. This allows the detection of at least 0.2 – 0.4 ng/well of recombinant Human Follistatin using 100 µl/well.
<b>WB</b>		Use a concentration of 0.1 - 0.2 µg/ml. Predicted molecular weight: 38 kDa.

## ターゲット情報

<b>機能</b>	Binds directly to activin and functions as an activin antagonist. Specific inhibitor of the biosynthesis and secretion of pituitary follicle stimulating hormone (FSH).
<b>組織特異性</b>	Isoform 1 is the predominant isoform in serum but is undetectable in follicular fluid.
<b>配列類似性</b>	Contains 3 follistatin-like domains. Contains 3 Kazal-like domains. Contains 1 TB (TGF-beta binding) domain.
<b>細胞内局在</b>	Secreted.

## 画像



**All lanes:** Anti-Follistatin antibody (Biotin) (ab47942) at 0.2 µg/ml

**Lane 1:** Marker

Unreduced Recombinant human Follistatin protein (**ab50163**):

**Lane 2:** 250 ng

**Lane 3:** 125 ng

**Lane 4:** 62.5 ng

**Lane 5:** 31.25 ng

**Lane 6:** 15.625 ng

**Lane 7:** 7.8 ng

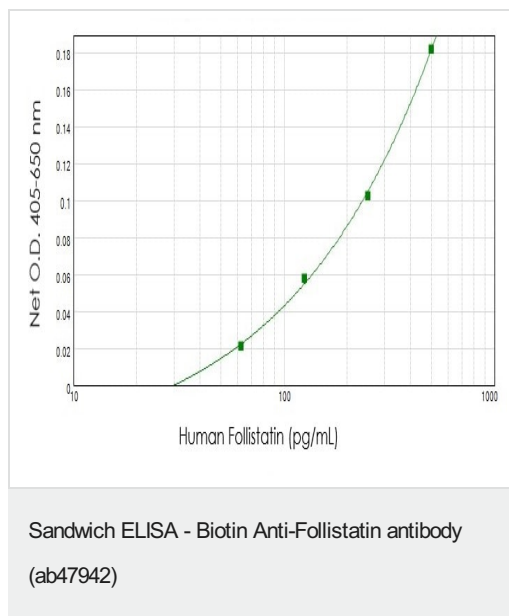
**Lane 8:** 3.9 ng

**Lane 9:** 1.95 ng

**Lane 10:** 0.975 ng

**Lane 11:** 0.4875 ng

**Lane 12:** 0.24 ng



To detect Human Follistatin by sandwich ELISA (using 100 µL/well) a concentration of 0.25 – 1.0 µg/mL of this antibody is required.

This biotinylated polyclonal antibody, in conjunction with Rabbit polyclonal to Follistatin (**ab47941**) as a capture antibody, allows the detection of at least 0.2 – 0.4 ng/well of recombinant Human Follistatin.

**Please note:** All products are "FOR RESEARCH USE ONLY. NOT FOR USE IN DIAGNOSTIC PROCEDURES"

### Our Abpromise to you: Quality guaranteed and expert technical support

- Replacement or refund for products not performing as stated on the datasheet
- Valid for 12 months from date of delivery
- Response to your inquiry within 24 hours
- We provide support in Chinese, English, French, German, Japanese and Spanish
- Extensive multi-media technical resources to help you
- We investigate all quality concerns to ensure our products perform to the highest standards

If the product does not perform as described on this datasheet, we will offer a refund or replacement. For full details of the Abpromise, please visit <https://www.abcam.co.jp/abpromise> or contact our technical team.

### Terms and conditions

- Guarantee only valid for products bought direct from Abcam or one of our authorized distributors