

# Biotin Anti-Fluorescein antibody ab6655

**3 References** [画像数 2](#)

### 製品の概要

---

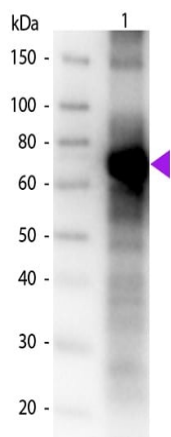
製品名	Biotin Anti-Fluorescein antibody
製品の詳細	Biotin Goat polyclonal to Fluorescein
由来種	Goat
標識	Biotin
アプリケーション	<b>適用あり:</b> Dot blot, ELISA, IHC-P, IHC-Fr, Immunomicroscopy, In situ hybridization, WB
種交差性	<b>交差種:</b> Species independent
免疫原	Chemical/ Small Molecule corresponding to Fluorescein conjugated to bovine serum albumin.
特記事項	<p>Centrifuge product if not completely clear after standing at room temperature. Dilute only prior to immediate use.</p> <p>Biotinamidocaproate N-Hydroxysuccinimide Ester (BAC) Biotin/Protein Ratio: 10-20 BAC molecules per goat IgG molecule.</p> <p>The Life Science industry has been in the grips of a reproducibility crisis for a number of years. Abcam is leading the way in addressing this with our range of recombinant monoclonal antibodies and knockout edited cell lines for gold-standard validation. Please check that this product meets your needs before purchasing.</p> <p>If you have any questions, special requirements or concerns, please send us an inquiry and/or contact our Support team ahead of purchase. Recommended alternatives for this product can be found below, along with publications, customer reviews and Q&amp;As</p>

### 製品の特性

---

製品の状態	Liquid
保存方法	Shipped at 4°C. Store at +4°C short term (1-2 weeks). Store at -20°C or -80°C. Avoid freeze / thaw cycle. Store In the Dark.
バッファー	pH: 6.50 Preservative: 0.01% Sodium azide Constituents: 0.42% Tripotassium orthophosphate, 0.87% Sodium chloride, 1% BSA
精製度	Affinity purified
特記事項(精製)	This product was prepared from monospecific antiserum by immunoaffinity chromatography using Fluorescein IgG coupled to agarose beads followed by solid phase adsorption(s) to remove any unwanted reactivities.



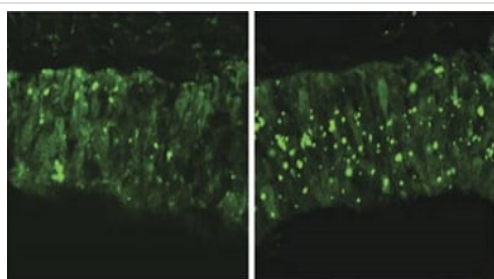


Western blot - Biotin Anti-Fluorescein antibody  
(ab6655)

Biotin Anti-Fluorescein antibody (ab6655) at 1/1000 dilution + BSA conjugated Fluorescein.

### Secondary

Peroxidase conjugated Streptavidin secondary antibody at 1/40000 dilution



Immunohistochemistry (Formalin/PFA-fixed paraffin-embedded sections) - Biotin Anti-Fluorescein antibody (ab6655)

Cropped image from Long et al, Nature Communications, 7, 10354, Fig. 7a.; doi: 10.1038/ncomms10354 Reproduced under the Creative Commons license <http://creativecommons.org/licenses/by/4.0/>

Immunohistochemical analysis of chicken embryo neuroepithelium labelling fluorescein-tagged morpholinos with ab6655. Samples were fixed in 4% paraformaldehyde at 4°C for 1 hour.

**Please note:** All products are "FOR RESEARCH USE ONLY. NOT FOR USE IN DIAGNOSTIC PROCEDURES"

### Our Abpromise to you: Quality guaranteed and expert technical support

- Replacement or refund for products not performing as stated on the datasheet
- Valid for 12 months from date of delivery

- Response to your inquiry within 24 hours
- We provide support in Chinese, English, French, German, Japanese and Spanish
- Extensive multi-media technical resources to help you
- We investigate all quality concerns to ensure our products perform to the highest standards

If the product does not perform as described on this datasheet, we will offer a refund or replacement. For full details of the Abpromise, please visit <https://www.abcam.co.jp/abpromise> or contact our technical team.

### **Terms and conditions**

---

- Guarantee only valid for products bought direct from Abcam or one of our authorized distributors