

Biotin Anti-CD63 antibody [MEM-259] ab134331

★★★★★ [1 Abreviews](#) [6 References](#) [画像数 3](#)

製品の概要

製品名	Biotin Anti-CD63 antibody [MEM-259]
製品の詳細	Biotin Mouse monoclonal [MEM-259] to CD63
由来種	Mouse
標識	Biotin
アプリケーション	適用あり: Flow Cyt
種交差性	交差種: Human
免疫原	Tissue, cells or virus corresponding to Human CD63. HPB-ALL T cell line
ポジティブ・コントロール	Activated platelets, neutrophils and basophils. Human spleen tissue.
特記事項	<p>The antibody is conjugated with Biotin-LC-NHS under optimum conditions. The reagent is free of unconjugated biotin.</p> <p>The Life Science industry has been in the grips of a reproducibility crisis for a number of years. Abcam is leading the way in addressing this with our range of recombinant monoclonal antibodies and knockout edited cell lines for gold-standard validation. Please check that this product meets your needs before purchasing.</p> <p>If you have any questions, special requirements or concerns, please send us an inquiry and/or contact our Support team ahead of purchase. Recommended alternatives for this product can be found below, along with publications, customer reviews and Q&As</p>

製品の特性

製品の状態	Liquid
保存方法	Shipped at 4°C. Store at +4°C short term (1-2 weeks). Store at -20°C or -80°C. Avoid freeze / thaw cycle.
バッファー	<p>pH: 7.40</p> <p>Preservative: 0.1% Sodium azide</p> <p>Constituent: 99% PBS</p>
精製度	Size exclusion
ポリ/モノ	モノクローナル
クローン名	MEM-259
アイソタイプ	IgG1

アプリケーション

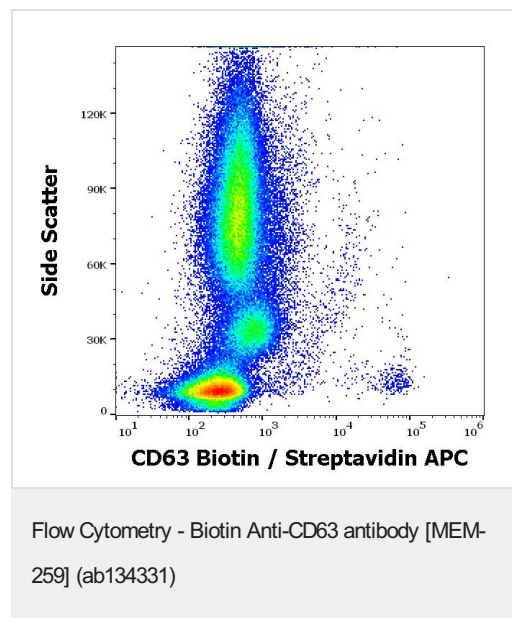
The Abpromise guarantee Abpromise保証は、次のテスト済みアプリケーションにおけるab134331の使用に適用されます
アプリケーションノートには、推奨の開始希釈率がありますが、適切な希釈率につきましてはご検討ください。

アプリケーション	Abreviews	特記事項
Flow Cyt		Use at an assay dependent concentration.

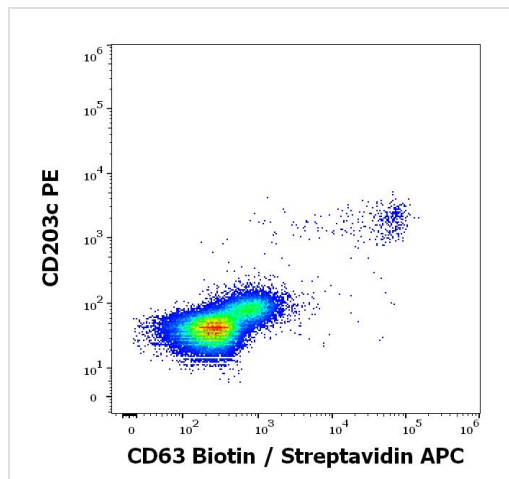
ターゲット情報

機能	This antigen is associated with early stages of melanoma tumor progression. May play a role in growth regulation.
組織特異性	Dysplastic nevi, radial growth phase primary melanomas, hematopoietic cells, tissue macrophages.
配列類似性	Belongs to the tetraspanin (TM4SF) family.
細胞内局在	Cell membrane. Lysosome membrane. Late endosome membrane. Also found in Weibel-Palade bodies of endothelial cells. Located in platelet dense granules.

画像

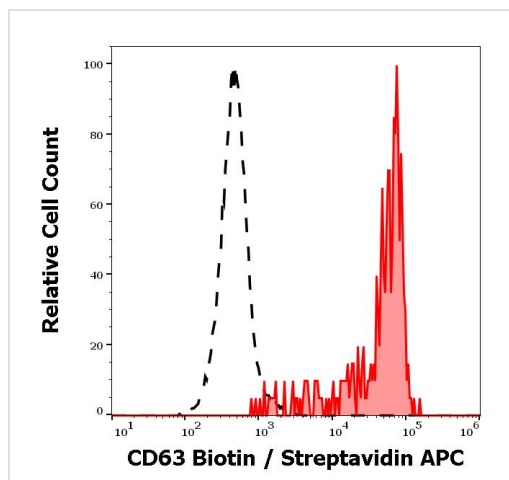


Flow cytometry multicolor surface staining of IgE stimulated peripheral blood mononuclear cells stained using ab134331 (concentration in sample 0.6 µg/mL, Streptavidin APC).



Flow Cytometry - Biotin Anti-CD63 antibody [MEM-259] (ab134331)

Flow cytometry multicolor surface staining of IgE stimulated peripheral blood mononuclear cells stained using ab134331 (concentration in sample 0.6 $\mu\text{g/mL}$, Streptavidin APC) and anti-human CD203c PE antibody (20 μL reagent / 100 μL of peripheral whole blood).



Flow Cytometry - Biotin Anti-CD63 antibody [MEM-259] (ab134331)

Flow Cytometry analysis of (surface staining) of IgE stimulated human peripheral whole blood using ab134331 (concentration in sample 0.6 $\mu\text{g/mL}$, Streptavidin APC). CD63 positive CD203c positive basophil granulocytes (red-filled) from neutrophil granulocytes (black-dashed).

Please note: All products are "FOR RESEARCH USE ONLY. NOT FOR USE IN DIAGNOSTIC PROCEDURES"

Our Abpromise to you: Quality guaranteed and expert technical support

- Replacement or refund for products not performing as stated on the datasheet
- Valid for 12 months from date of delivery
- Response to your inquiry within 24 hours

- We provide support in Chinese, English, French, German, Japanese and Spanish
- Extensive multi-media technical resources to help you
- We investigate all quality concerns to ensure our products perform to the highest standards

If the product does not perform as described on this datasheet, we will offer a refund or replacement. For full details of the Abpromise, please visit <https://www.abcam.co.jp/abpromise> or contact our technical team.

Terms and conditions

- Guarantee only valid for products bought direct from Abcam or one of our authorized distributors