

### Biotin Anti-CD42b antibody [AK2] ab30400

**2 References** [画像数 1](#)

#### 製品の概要

製品名	Biotin Anti-CD42b antibody [AK2]
製品の詳細	Biotin Mouse monoclonal [AK2] to CD42b
由来種	Mouse
標識	Biotin
アプリケーション	<b>適用あり:</b> Flow Cyt
種交差性	<b>交差種:</b> Human
免疫原	The details of the immunogen for this antibody are not available.
ポジティブ・コントロール	Human peripheral blood platelets
特記事項	<p>Clone AK2 has been reported to block the binding of von Willebrand Factor to platelets.</p> <p>The Life Science industry has been in the grips of a reproducibility crisis for a number of years. Abcam is leading the way in addressing this with our range of recombinant monoclonal antibodies and knockout edited cell lines for gold-standard validation. Please check that this product meets your needs before purchasing.</p> <p>If you have any questions, special requirements or concerns, please send us an inquiry and/or contact our Support team ahead of purchase. Recommended alternatives for this product can be found below, along with publications, customer reviews and Q&amp;As</p>

#### 製品の特性

製品の状態	Liquid
保存方法	Shipped at 4°C. Store at +4°C short term (1-2 weeks). Store at -20°C or -80°C. Avoid freeze / thaw cycle.
バッファー	<p>pH: 7.40</p> <p>Preservative: 0.09% Sodium azide</p> <p>Constituents: PBS, 1% BSA</p>
精製度	Protein G purified
一次抗体 備考	Clone AK2 has been reported to block the binding of von Willebrand Factor to platelets.
ポリ/モノ	モノクローナル
クローン名	AK2

アイソタイプ

IgG1

アプリケーション

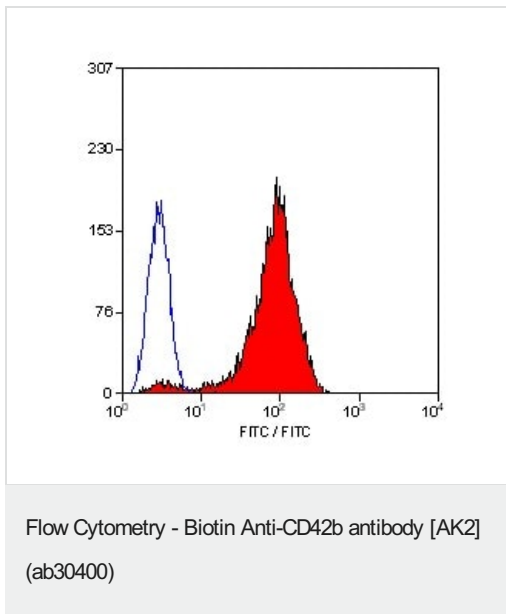
The Abpromise guarantee      Abpromise保証は、次のテスト済みアプリケーションにおけるab30400の使用に適用されます  
アプリケーションノートには、推奨の開始希釈率がありますが、適切な希釈率につきましてはご検討ください。

アプリケーション	Abreviews	特記事項
Flow Cyt		Use at an assay dependent concentration. Use neat or 10µl for 100µl of whole blood.

ターゲット情報

機能	GP-Ib, a surface membrane protein of platelets, participates in the formation of platelet plugs by binding to the A1 domain of vWF, which is already bound to the subendothelium.
関連疾患	Non-arteritic anterior ischemic optic neuropathy Bernard-Soulier syndrome Bernard-Soulier syndrome A2, autosomal dominant Pseudo-von Willebrand disease
配列類似性	Contains 7 LRR (leucine-rich) repeats. Contains 1 LRRCT domain. Contains 1 LRRNT domain.
翻訳後修飾	Glycocalicin, which is approximately coextensive with the extracellular part of the molecule, is cleaved off by calpain during platelet lysis.
細胞内局在	Membrane.

画像



Flow cytometric analysis of CD42b expressing cells in human peripheral blood platelets using ab30400.

**Please note:** All products are "FOR RESEARCH USE ONLY. NOT FOR USE IN DIAGNOSTIC PROCEDURES"

#### Our Abpromise to you: Quality guaranteed and expert technical support

---

- Replacement or refund for products not performing as stated on the datasheet
- Valid for 12 months from date of delivery
- Response to your inquiry within 24 hours
- We provide support in Chinese, English, French, German, Japanese and Spanish
- Extensive multi-media technical resources to help you
- We investigate all quality concerns to ensure our products perform to the highest standards

If the product does not perform as described on this datasheet, we will offer a refund or replacement. For full details of the Abpromise, please visit <https://www.abcam.co.jp/abpromise> or contact our technical team.

#### Terms and conditions

---

- Guarantee only valid for products bought direct from Abcam or one of our authorized distributors