


Biotin Anti-CD14 antibody [MEM-18] ab21889

画像数 2

製品の概要

製品名	Biotin Anti-CD14 antibody [MEM-18]
製品の詳細	Biotin Mouse monoclonal [MEM-18] to CD14
由来種	Mouse
標識	Biotin
アプリケーション	適用あり: Flow Cyt
種交差性	<p>交差種: Human</p> <p>交差が予測される動物種: Non human primates </p>
免疫原	Full length protein corresponding to CD14. A crude mixture of human urinary proteins precipitated by ammonium sulphate from the urine of a patient suffering from proteinuria.
特記事項	<p>Purified antibody is conjugated with Biotin-LC-NHS under optimum conditions. The reagent is free of unconjugated biotin.</p> <p>The Life Science industry has been in the grips of a reproducibility crisis for a number of years. Abcam is leading the way in addressing this with our range of recombinant monoclonal antibodies and knockout edited cell lines for gold-standard validation. Please check that this product meets your needs before purchasing.</p> <p>If you have any questions, special requirements or concerns, please send us an inquiry and/or contact our Support team ahead of purchase. Recommended alternatives for this product can be found below, along with publications, customer reviews and Q&As</p>

製品の特性

製品の状態	Liquid
保存方法	Shipped at 4°C. Store at +4°C short term (1-2 weeks). Store at -20°C or -80°C. Do Not Freeze.
バッファー	<p>pH: 7.40</p> <p>Preservative: 0.097% Sodium azide</p> <p>Constituent: PBS</p>
精製度	Protein G purified
ポリ/モノ	モノクローナル
クローン名	MEM-18
アイソタイプ	IgG1

アプリケーション

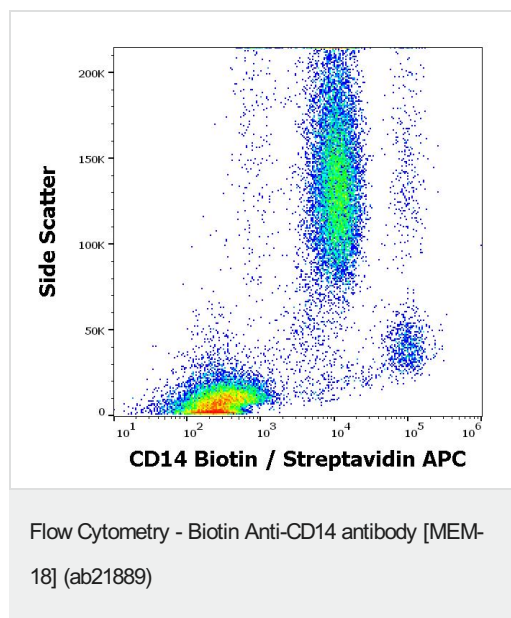
The Abpromise guarantee **Abpromise保証は、**次のテスト済みアプリケーションにおけるab21889の使用に適用されます
アプリケーションノートには、推奨の開始希釈率がありますが、適切な希釈率につきましてはご検討ください。

アプリケーション	Abreviews	特記事項
Flow Cyt		Use a concentration of 2 - 4 µg/ml.

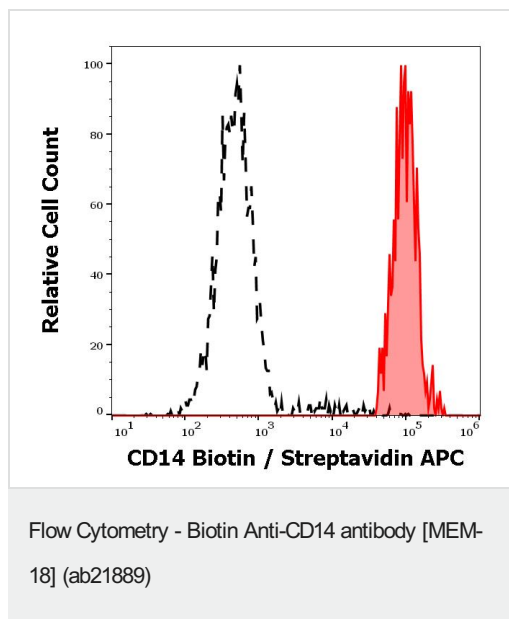
ターゲット情報

機能	Cooperates with MD-2 and TLR4 to mediate the innate immune response to bacterial lipopolysaccharide (LPS). Acts via MyD88, TIRAP and TRAF6, leading to NF-kappa-B activation, cytokine secretion and the inflammatory response. Up-regulates cell surface molecules, including adhesion molecules.
組織特異性	Expressed strongly on the surface of monocytes and weakly on the surface of granulocytes; also expressed by most tissue macrophages.
配列類似性	Contains 11 LRR (leucine-rich) repeats.
翻訳後修飾	N- and O- glycosylated. O-glycosylated with a core 1 or possibly core 8 glycan.
細胞内局在	Cell membrane.

画像



Flow cytometry surface staining pattern of human peripheral whole blood stained using ab21889 at 6 µg/ml.



Separation of human monocytes (red) from lymphocytes (black) in flow cytometry analysis (surface staining) of human peripheral whole blood using ab21889 at 6 µg/ml, Streptavidin.

Please note: All products are "FOR RESEARCH USE ONLY. NOT FOR USE IN DIAGNOSTIC PROCEDURES"

Our Abpromise to you: Quality guaranteed and expert technical support

- Replacement or refund for products not performing as stated on the datasheet
- Valid for 12 months from date of delivery
- Response to your inquiry within 24 hours
- We provide support in Chinese, English, French, German, Japanese and Spanish
- Extensive multi-media technical resources to help you
- We investigate all quality concerns to ensure our products perform to the highest standards

If the product does not perform as described on this datasheet, we will offer a refund or replacement. For full details of the Abpromise, please visit <https://www.abcam.co.jp/abpromise> or contact our technical team.

Terms and conditions

- Guarantee only valid for products bought direct from Abcam or one of our authorized distributors